



European Commission  
Agriculture and Rural Development



## **IPARD structure and timeframe**

**Kaj Mortensen**

HoU “Pre-accession assistance to agriculture and rural development”, DG Agriculture and Rural Development,  
European Commission



# IPARD structure and timeframe



European Commission  
Agriculture and Rural Development

## Multi-annual Indicative Financial Framework (MIFF)

establishes the financial allocation between countries and components



## Multi-annual Indicative Planning Document (MIPD)

establishes strategies for each country for the IPA components, based on the priorities set in the Accession Partnership, NPAA and the Regular Reports



## Components for specific programming

Transition & Institution Building

Regional & Cross-Border Co-op

Regional Development

Human Resources Development

**Rural Development**

# IPARD structure and timeframe



European Commission  
Agriculture and Rural Development

## Rural development component (IPARD)

### Main objectives:

- To prepare countries for the implementation and management of the Common Agricultural Policy
- Contribute to the sustainable adaptation of the agricultural sector and rural areas

### Multi-annual rural development programme

### Three “axes” containing 9 “measures”

## **Main steps towards the IPARD**

**Receiving of a "Candidate Country" status**



**Adoption of IPA Rural Development Programme**



**Framework and Sectoral Agreements**



**National accreditation of IPARD operational structures**

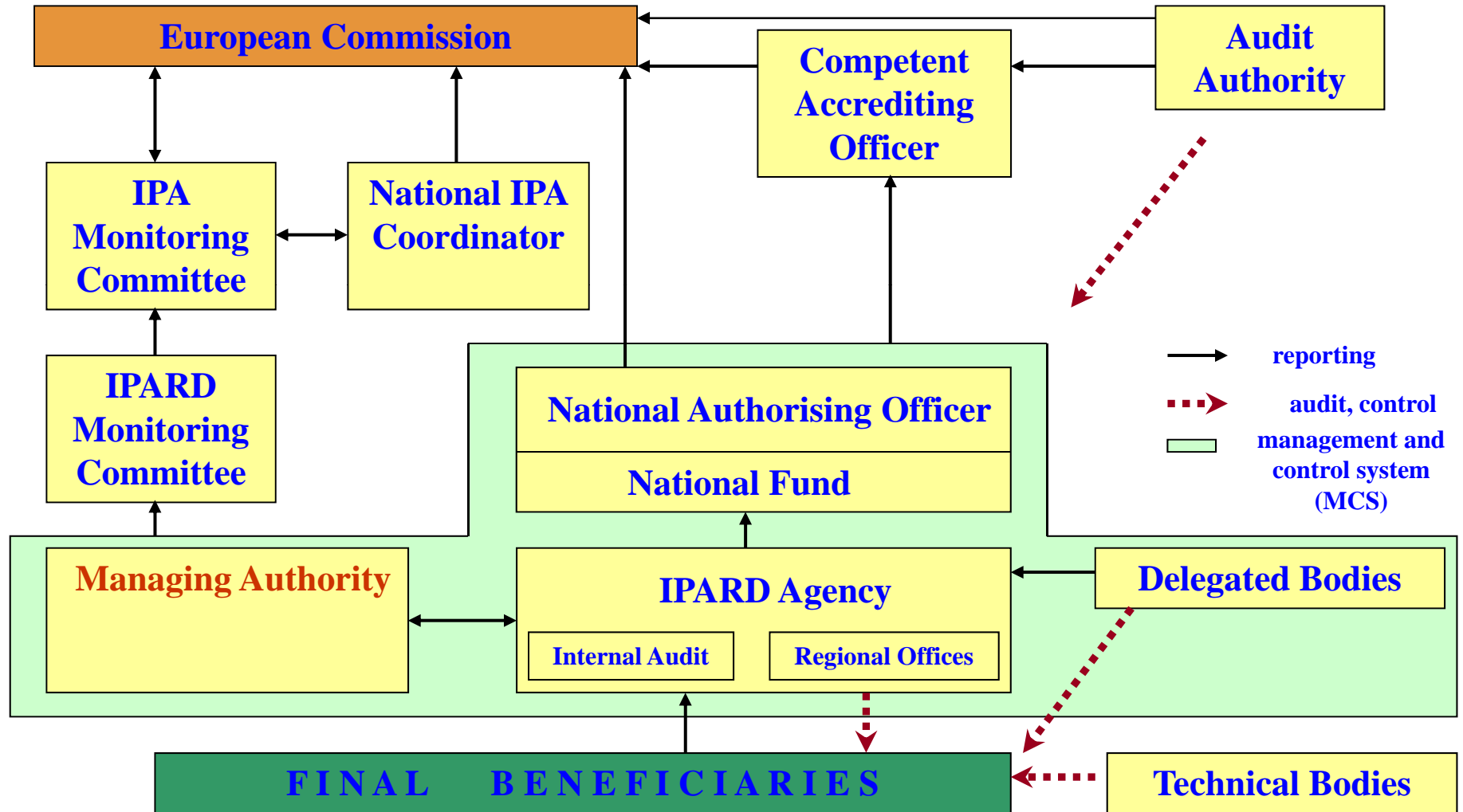


**Accreditation and conferral of management decision**



**Multi-annual Financing Agreement**

# IPARD structures

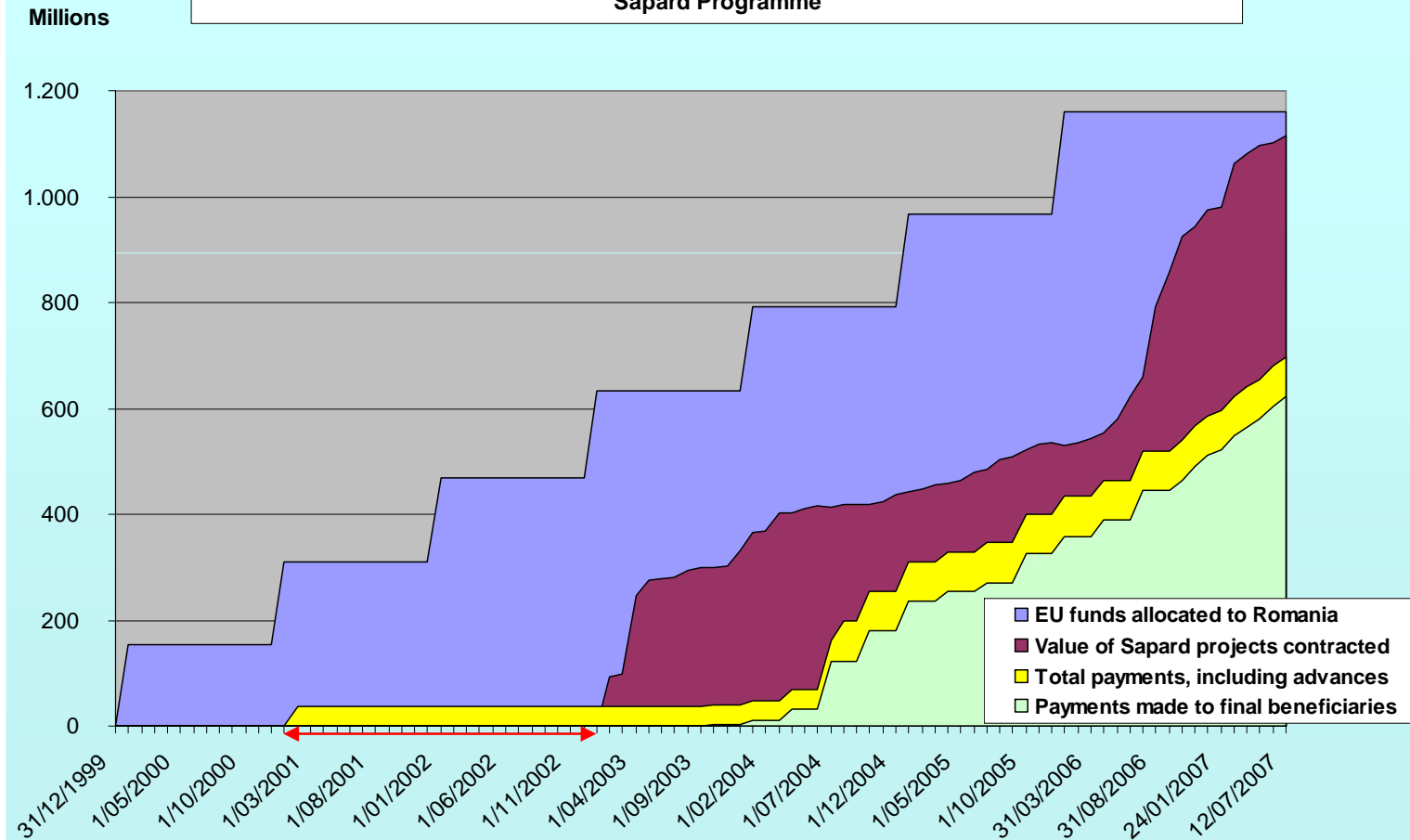


# IPARD structure and timeframe



European Commission  
Agriculture and Rural Development

Romania - EU Allocation, Value of Sapard Projects Contracted and Payments since the Start of the Sapard Programme





# IPARD structure and timeframe



European Commission  
Agriculture and Rural Development

## What next? – longer-term

- Prepare RD strategy and IPARD programme
- Establish legal basis
- Build administrative capacity for the future IPARD Agency and Managing Authority
- Establish farm register, land cadastre, rural census, statistics and advisory services
- Make credits for farmers and rural business available
- Support the organisation of civil society partners



# IPARD structure and timeframe



European Commission  
Agriculture and Rural Development

## What next? – shorter-term

- **Create two teams** – (1) on programming issues, to become a Managing Authority in the future, (2) – to become an IPARD Agency
- Establish ongoing **dialogue** with us



# IPARD structure and timeframe



European Commission  
Agriculture and Rural Development

## What next? – shorter-term

### Managing Authority / Programming

- Identify key priorities / measures / sectors
- Carry out sector analysis of sectors covered in the Programme
- Start elaborating IPARD programme

### IPARD Agency / financial management

- Review the accreditation criteria in the Sectoral Agreement and start preparation