



South Eastern Europe
SWG ERD Regional Rural Development Standing Working Group

giz Deutsche Gesellschaft für Internationale Zusammenarbeit (GIZ) GmbH

Rural Development through Integrated Forest and Water Resource Management in Southeast Europe LEIWW

LEADER in SEE



Kick off Meeting of the Regional Expert Advisory Working Group on LEADER

9th – 10th March 2017, Skopje



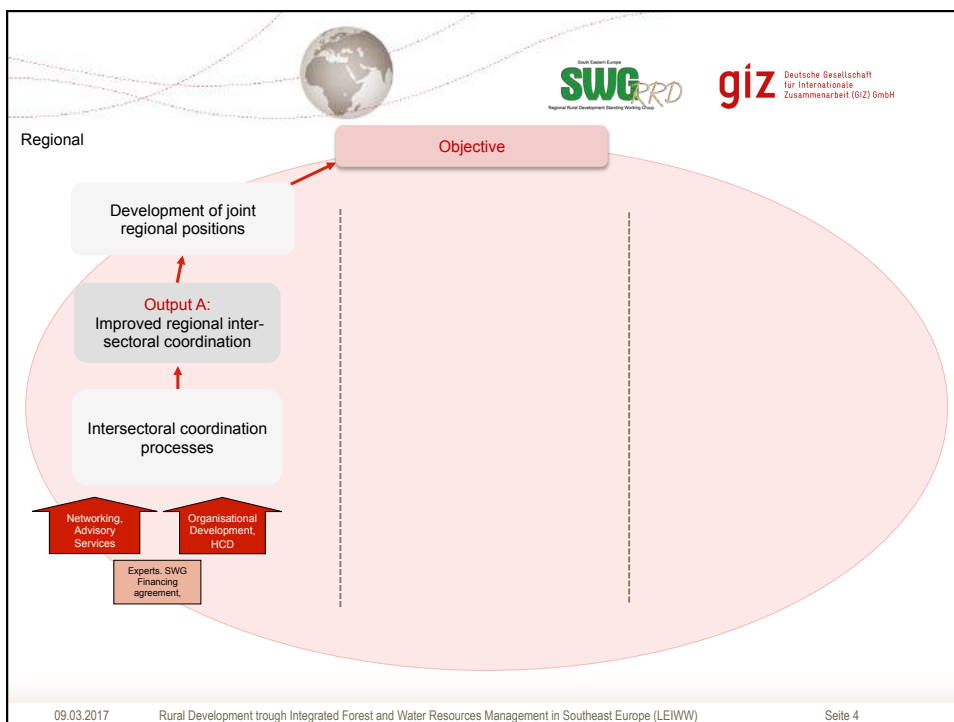
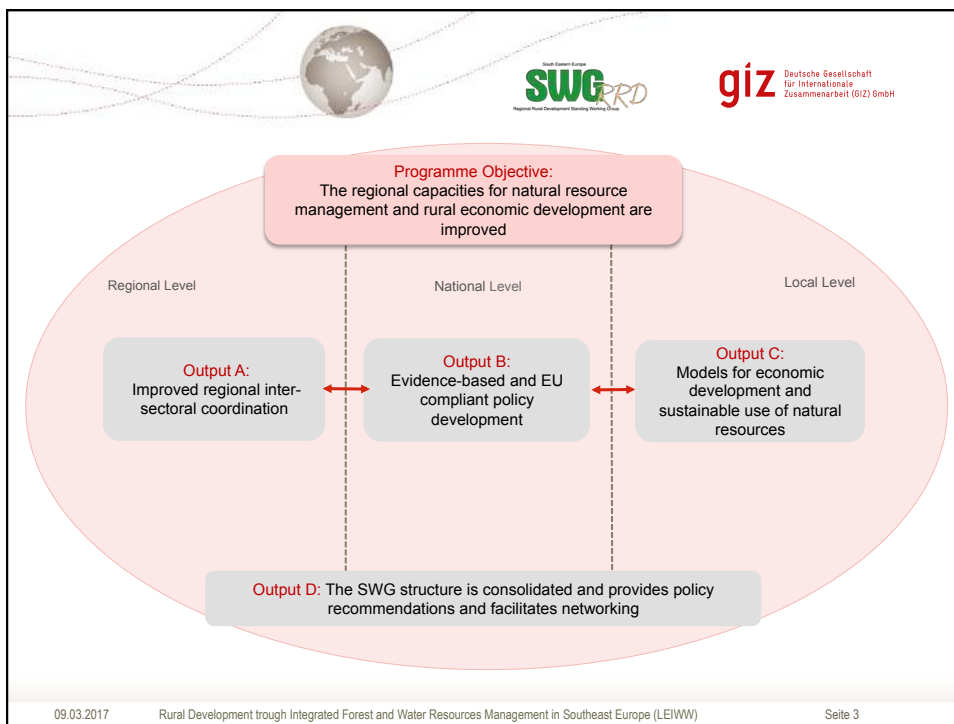
South Eastern Europe
SWG ERD Regional Rural Development Standing Working Group

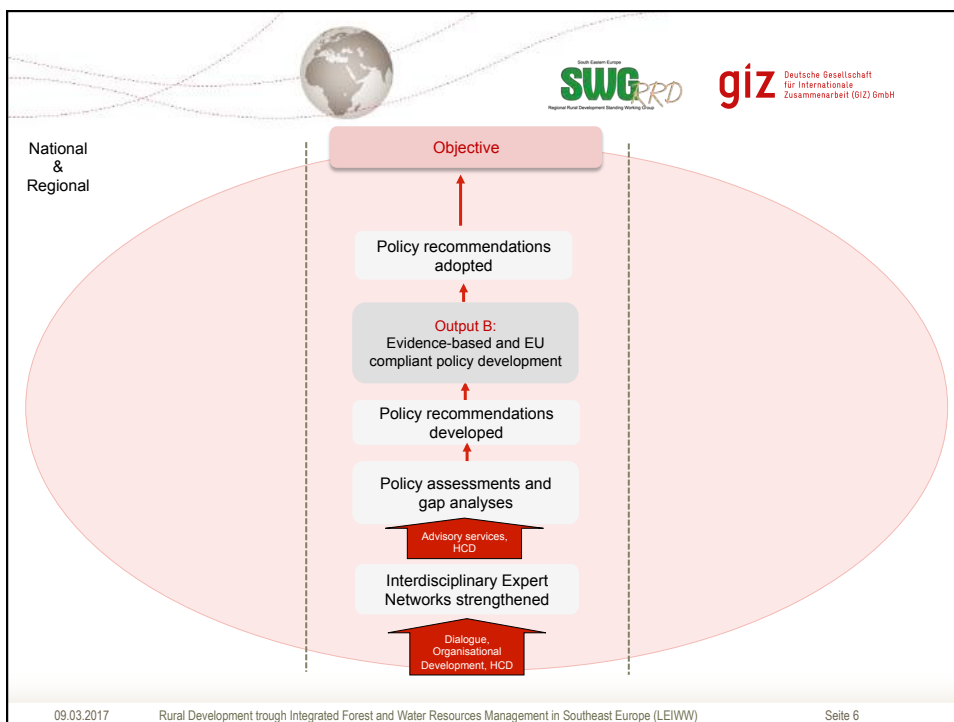
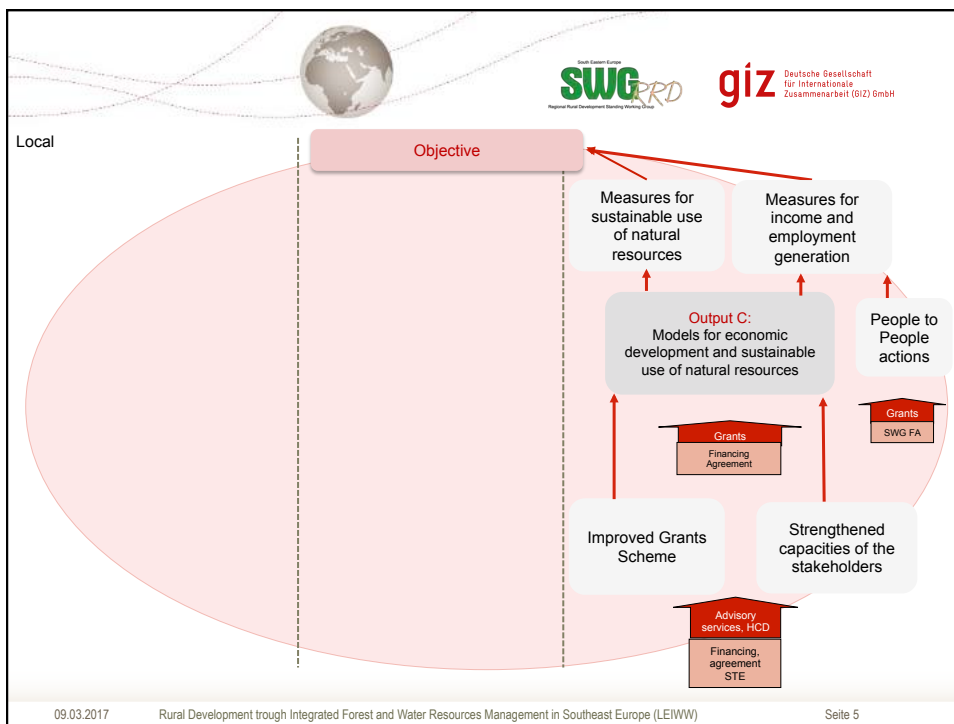
giz Deutsche Gesellschaft für Internationale Zusammenarbeit (GIZ) GmbH




The programme with a duration of 3 years (2015-2017)

- Is commissioned by the German Federal Ministry for Economic Cooperation and Development (BMZ)
- Is a common programme of SWG and GIZ aiming to build capacities for rural development, sustainable forest and water resource management
- Lead executing agencies are the Ministries of Agriculture, through their membership in the SWG
- Objective and interventions commonly developed and based on regional proposals
- Targets 6 countries/territories in South-East-Europe: Albania, Bosnia and Herzegovina, Kosovo*, Macedonia, Montenegro and Serbia


09.03.2017 Rural Development through Integrated Forest and Water Resources Management in Southeast Europe (LEIWW) Seite 2





Evidence-based and EU compliant policy development



- Interdisciplinary SWG Expert Networks and REAWGs are strengthened
- Evidence-based policy assessments and gap analyses are supported
 - Areas with Natural Constrains,
 - Sustainable Management of Natural Resources in SEE
 - **LEADER approach in the SEE**
- The policy recommendations are fed into public discourse and policy dialogue based on SWG formats
- Policy recommendations taken up regionally / in selected SWG member territories

Objective:
Preconditions for an evidence-based and EU compliant policy development for integration of environmental objectives in agricultural / rural development policy are created

09.03.2017 Rural Development trough Integrated Forest and Water Resources Management in Southeast Europe (LEIWW) Seite 7



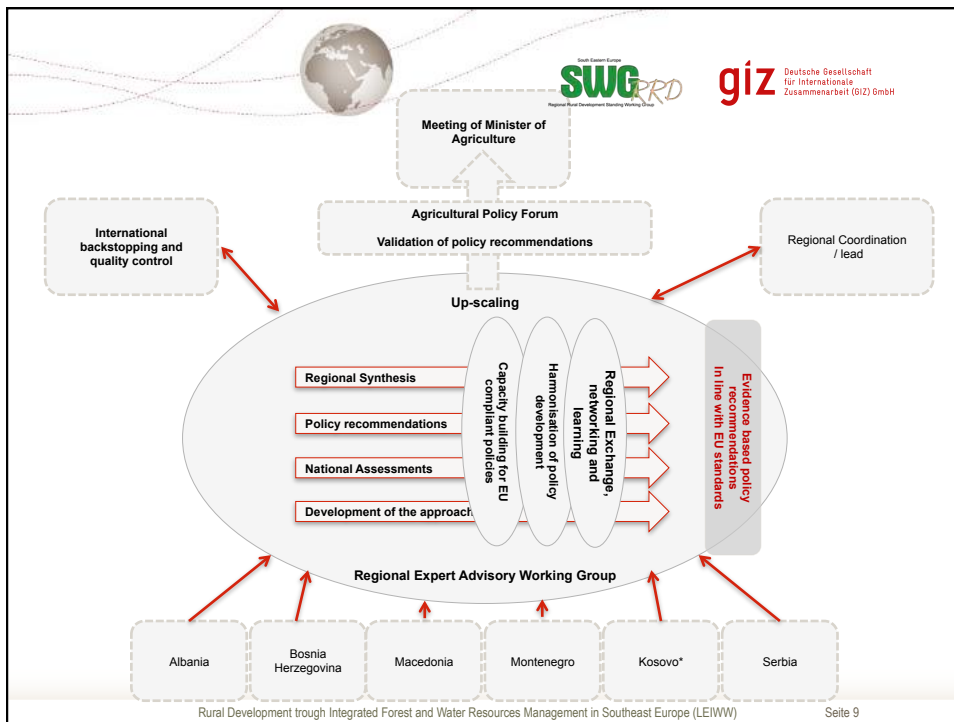


Objectives

- to support a regional SWG platform for exchange of experiences and knowledge and enhance the regional cooperation and networking between LEADER experts in SEE;
- to support SWG to analyse the situation and conditions in the countries/territories regarding the implementation of the LEADER like approaches (Identification of needs, challenges, constrains as well as development potentials);
- to support SWG provide recommendations for improved mainstreaming of the LEADER approach in SEE and to introduce a mechanism to facilitate implementation of LEADER like local developm



09.03.2017 Rural Development trough Integrated Forest and Water Resources Management in Southeast Europe (LEIWW) Seite 8




giz Deutsche Gesellschaft für Internationale Zusammenarbeit (GIZ) GmbH

Als bundeseigenes Unternehmen unterstützt die GIZ die Bundesregierung bei der Erreichung ihrer Ziele auf dem Gebiet der internationalen Zusammenarbeit für eine nachhaltige Entwicklung.
Herausgeber:
Deutsche Gesellschaft für Internationale Zusammenarbeit (GIZ) GmbH
Eingetragener Geschäftssitz: Bonn und Eschborn, Deutschland

„Rural Development through Integrated Forest and Water Resources Management in Southeast Europe“ (LEIWW)

Antonie Grubisic 5, 1000 Skopje, Macedonia

T +389 2 3103 569
M +389 71 382 899
E Benjamin.Mohr@giz.de
I www.giz.de

Verantwortlich
Benjamin Mohr, Team Leader
Verfasser
Anica Palazzo / Benjamin Mohr
Bildnachweis
© GIZ/SWG

In Zusammenarbeit mit



SWG RRD
South Eastern Europe Regional Rural Development Steering Meeting

Seite 10