

South Eastern Europe
SWG RRD
Regional Rural Development Working Group

giz Deutsche Gesellschaft für Internationale Zusammenarbeit (GIZ) GmbH

Rural Development through Integrated Forest and Water Resource Management in Southeast Europe - LEIWW

40th SWG Assembly Meeting, Graz, Austria
December 06th, 2017

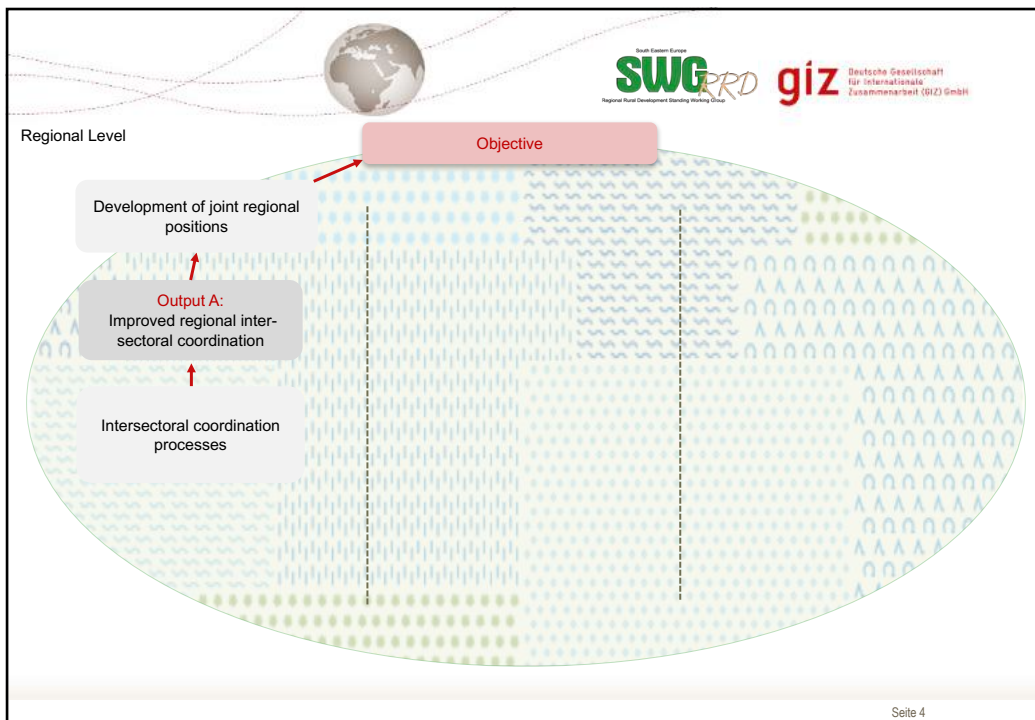
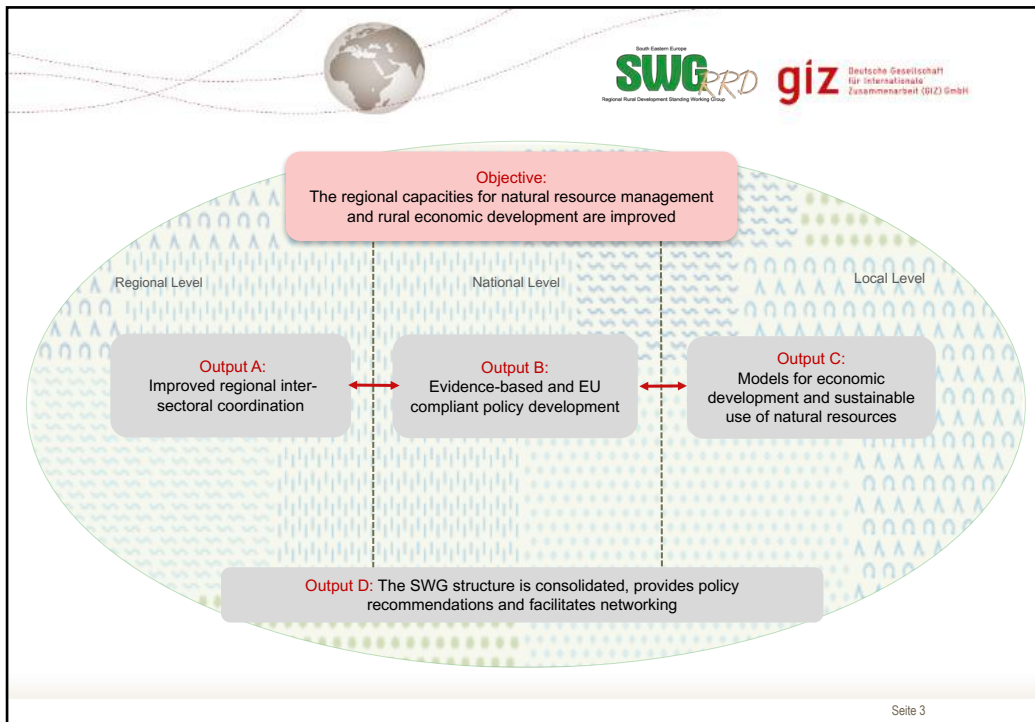
South Eastern Europe
SWG RRD
Regional Rural Development Working Group

giz Deutsche Gesellschaft für Internationale Zusammenarbeit (GIZ) GmbH

The LEIWW Project

Commissioned by:	German Federal Ministry for Economic Cooperation and Development (BMZ)
Budget Duration	3.5 Mio. EUR + 0,5 Mio. EUR topping up out of the BMZ returnee programme 3 years (2015-2017)
Main partners	SWG / Ministries of Agriculture in SEE
Target countries	Albania, Bosnia and Herzegovina, Kosovo*, Macedonia, Montenegro and Serbia

Seite 2



South Eastern Europe
SWG RRD Regional Rural Development Standing Working Group

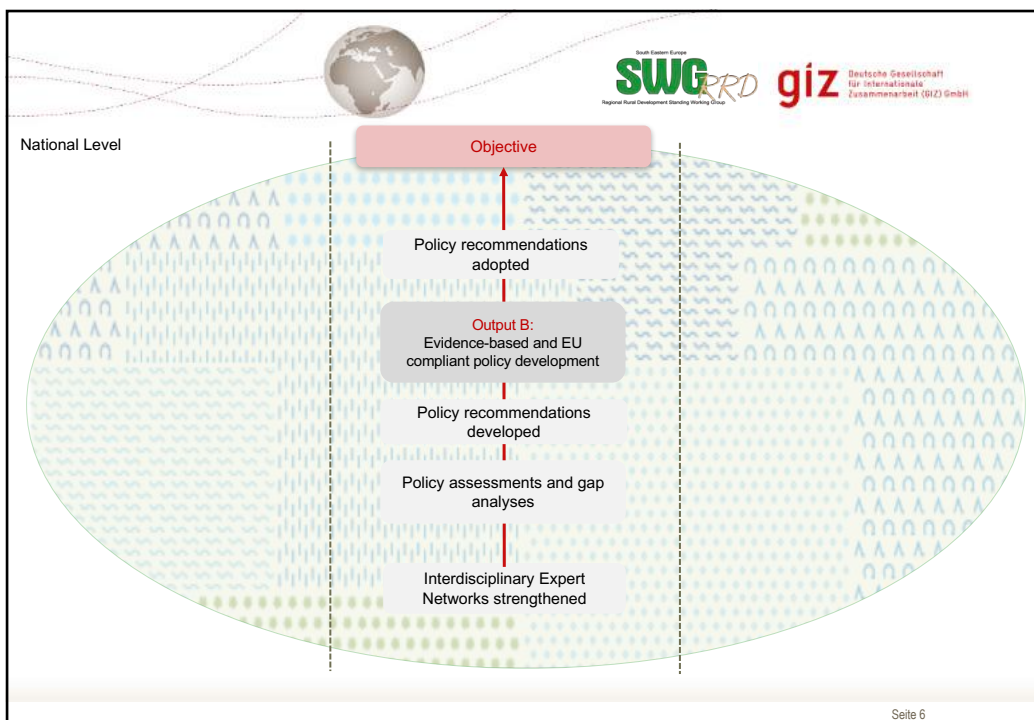
giz Deutsche Gesellschaft für internationale Zusammenarbeit (GIZ) GmbH

Progress review

Output A: Improved regional inter-sectoral coordination

- Objectives of output A) **achieved**:
The Regional Cooperation Council (RCC) integrated agriculture and rural development in the Programming Document 2017-2019, that has been endorsed in March 2017
- The Regional Expert Working Group Environment has been supported as an intergovernmental regional platform on environment, natural resource management and climate change
- **Ongoing** support to SWG for:
 - the coordination of regional activities of the SEE 2020 Strategy
 - the preparation of measures of the SEE Strategy 2020
 - Support to the
 - Meetings of Ministers of Agriculture of SEE
 - Agricultural Policy Forums,
 - SWG Assembly Sessions
 - further regional exchange formats

Seite 5





Progress review

Output B: Evidence-based and EU compliant policy development

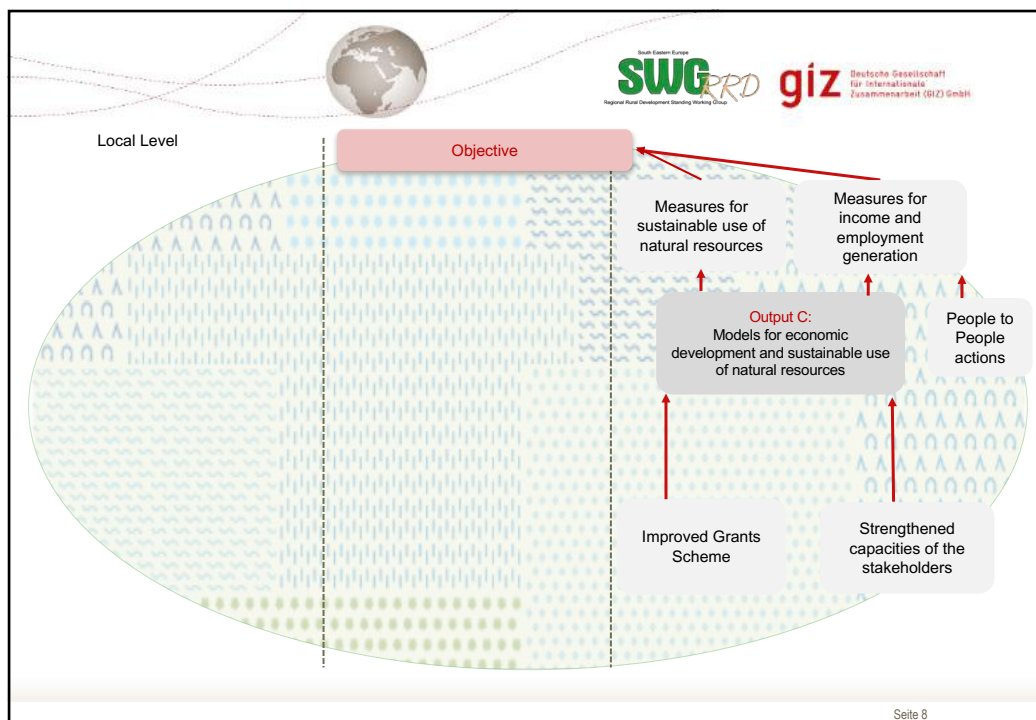
Regional Expert Advisory Working Groups (REAWG) supported to assess policies on national and regional level

- Areas with natural constraints, **completed**
 - Travelling Workshop in Italy
- Water and Forest Management, **completed**
 - Travelling Workshop in Sweden
- LEADER, **ongoing**
 - Exposure visit to Austria
- Agro-Biodiversity, **ongoing**
 - Exposure visit to Germany
- Agro-environmental measures / agro-ecological zoning, **planned**
- **Planned:** National dissemination of results of all policy assessment and recommendations



Areas with Natural Constraints in South-East Europe: Assessment and Policy Recommendations

Seite 7





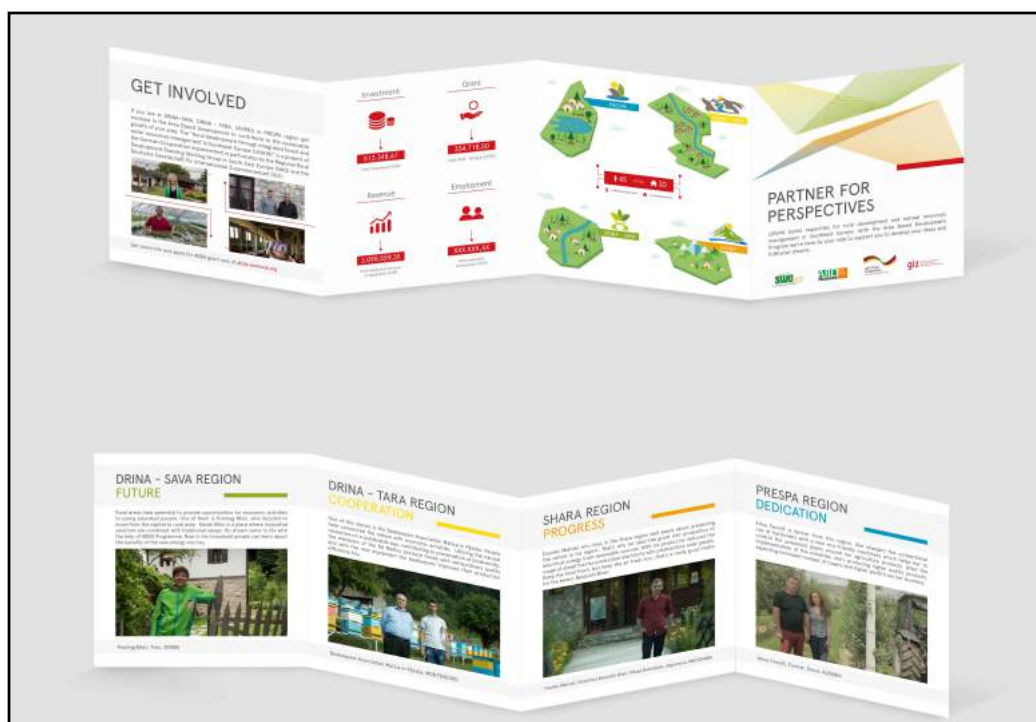



Progress review

Output C: Models for the sustainable use of natural resources are demonstrated in selected cross-border pilot regions

- The SWG ABD Approach serves as platform to support income generation / diversification and integrated natural resource management
- Support to the improvement of the procedures of the “Area Based Development” Grant Scheme Two ABD Grant Scheme Call for proposals were launched in 2016
- More than 60 beneficiaries granted, with an investment exceeding 600.000 EUR
- Support to numerous “people-to-people” activities focusing on economic, environmental and socio-cultural priorities of rural areas reaching out to more than 100.000 people
- Support to training and qualification for agriculture, rural development, value chain promotion, natural resource management and tourism
- Communication of results through a promotional video, fact-sheets and posters

Seite 9





South Eastern Europe
SWG RRD
National Rural Development Standing Working Group

giz Deutsche Gesellschaft für Internationale Zusammenarbeit (GIZ) GmbH

Tasks ahead

- Output A)
Continuous support to regional inter-sectoral coordination processes and SWG
- Output B)
Definition of future activities on ANC and NRM in SEE;
- Finalisation of the assessments and policy recommendations in regard to
 - LEADER / community led local development approaches in SEE
 - Agro-Biodiversity
 - Agro-environmental measures / agro-ecological zoning, **planned**
- Output C)
 - Finalisation of the ABD activities
 - Assessing the potentials for value-chain development in 7 ABD cross-border regions
- Development of a proposal for Phase II (06.2018 – 05.2021)
 - To be commissioned by the German Cooperation
 - To be approved by SWG, through the secretariat / assembly

Seite 11



South Eastern Europe
SWG RRD
National Rural Development Standing Working Group

giz Deutsche Gesellschaft für Internationale Zusammenarbeit (GIZ) GmbH

Considerations for potential follow up of LEIWW

- References to overarching strategies:
 - UN Sustainable Development Goals
 - EU Neighbourhood Strategy
 - RCC SEE 2020 Strategy
 - German Cooperation strategies: Focus Europe, Rural Development and Sustainable Economic Development
- Based on
 - SWG Project proposal:
 - GIZ Project Sketch
 - Findings of the Project Evaluation
 - Expert appraisal mission and appraisal workshop with SWG and GIZ
- Content and frame to be commissioned by the German Cooperation and to be approved by SWG, through the secretariat / assembly

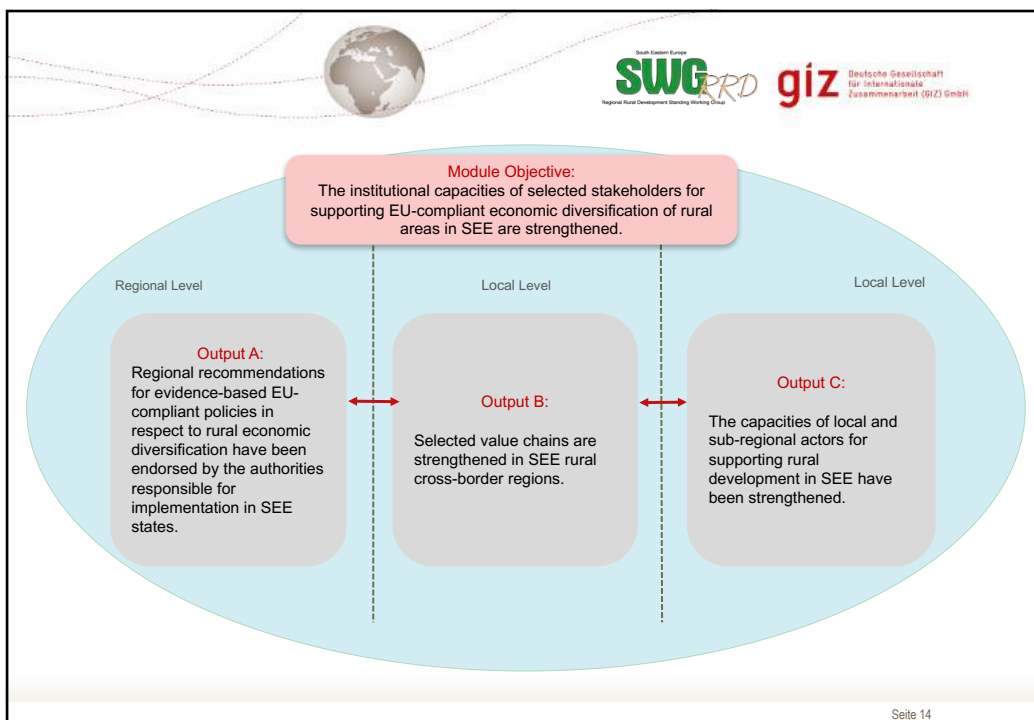
Seite 12

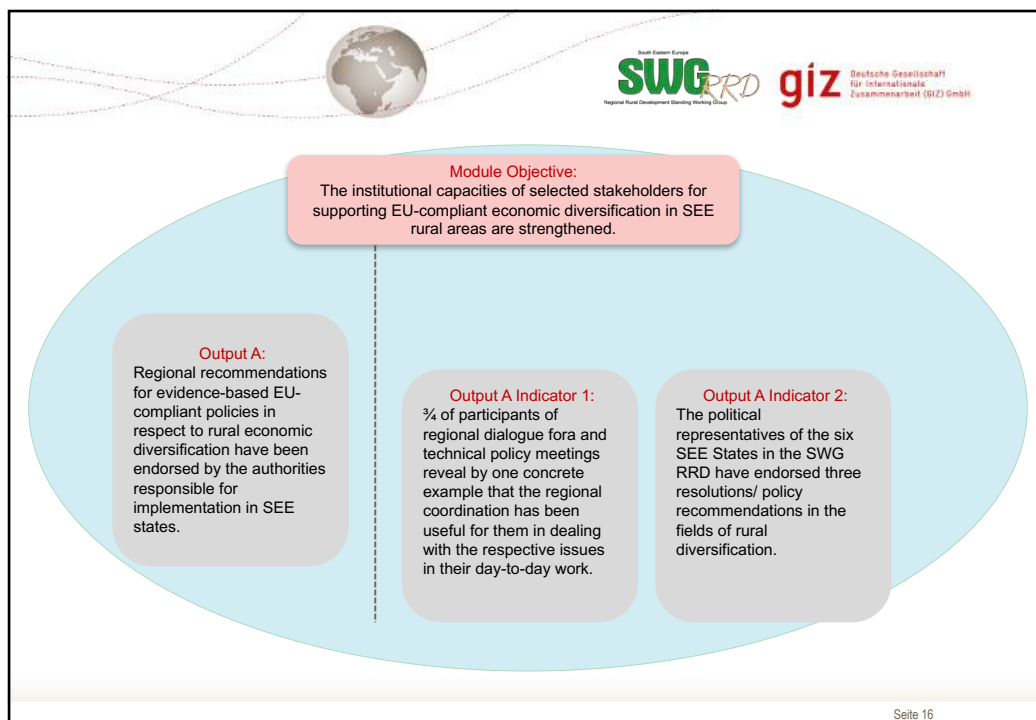
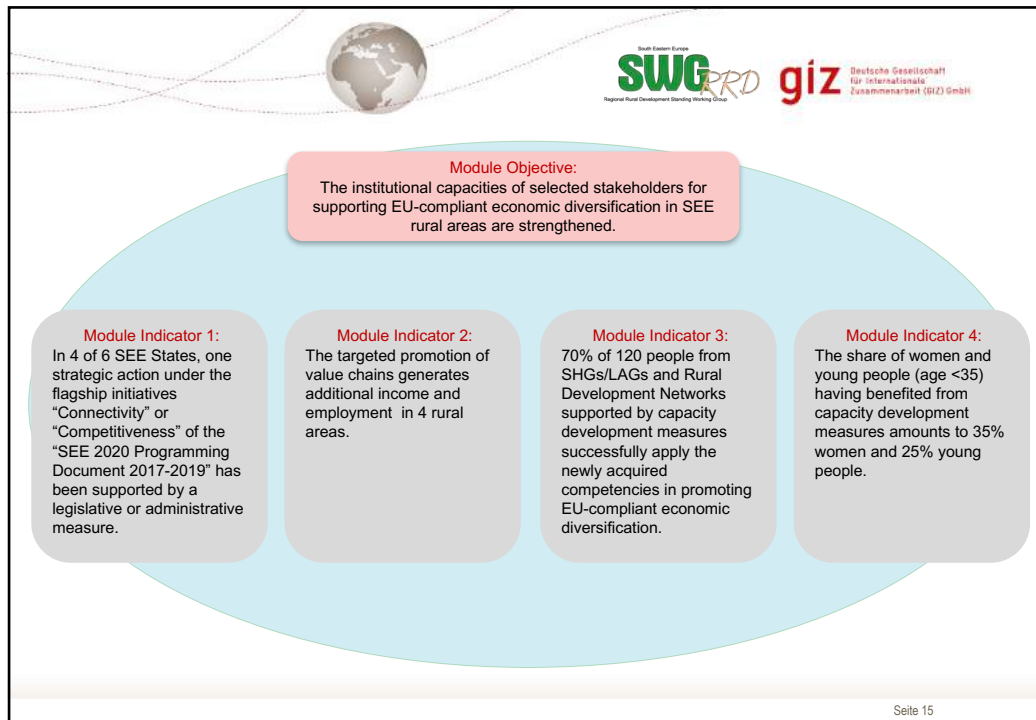


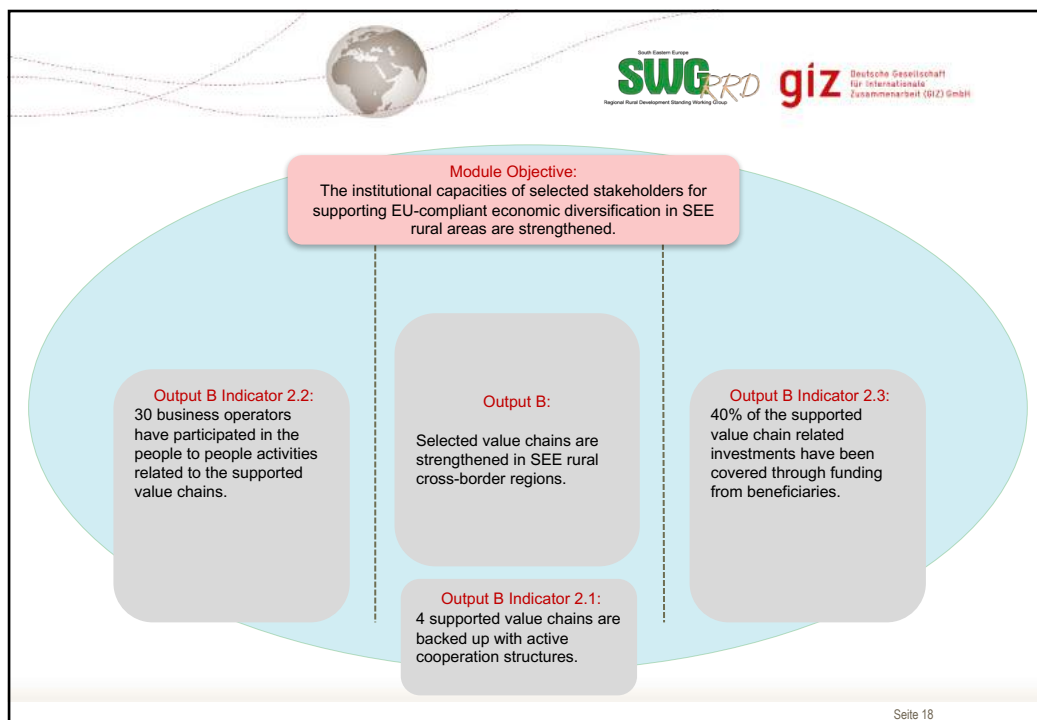
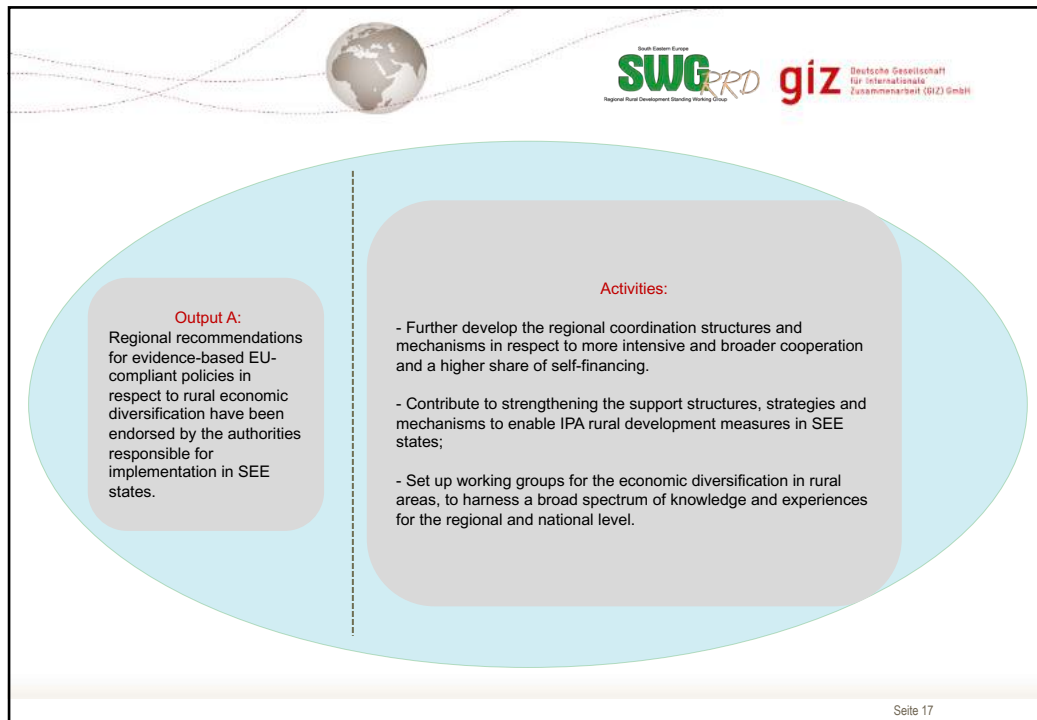
The Support to economic diversification of rural areas in Southeast Europe - SEDRA

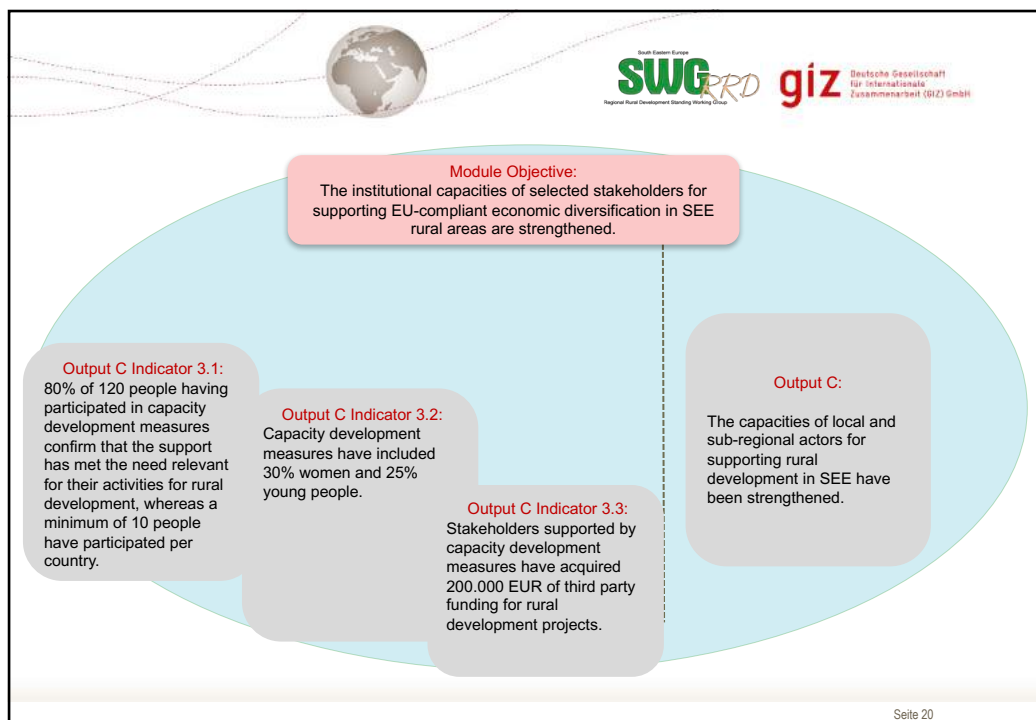
To be commissioned by:	German Federal Ministry for Economic Cooperation and Development (BMZ)
Planned budget Duration	2.2 Mio. EUR + 1 Mio. EUR topping up 3 years (2018-2021)
Planned Main partners	SWG / Ministries of Agriculture in SEE
Planned Target countries	Albania, Bosnia and Herzegovina, Kosovo*, Macedonia, Montenegro and Serbia

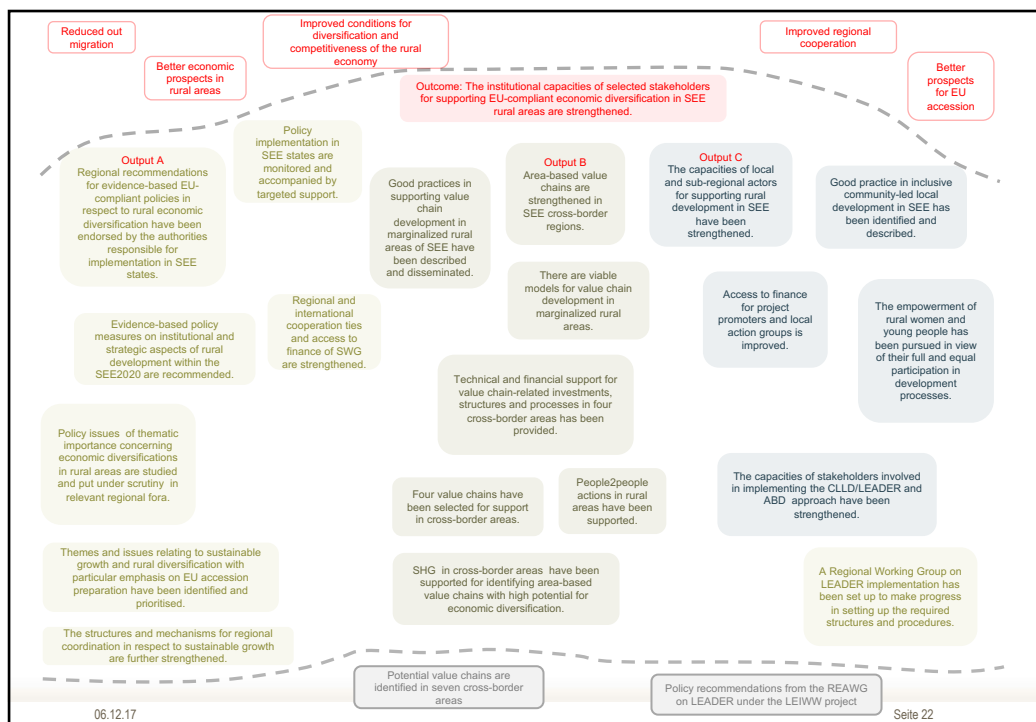
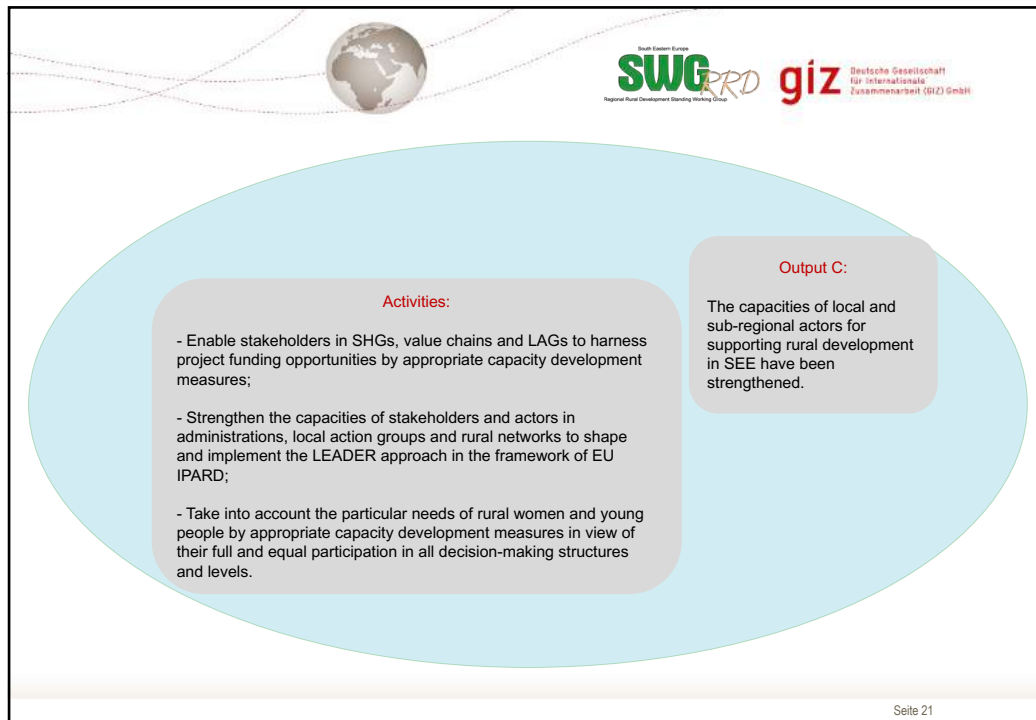
Seite 13














South Eastern Europe
SWG RRD
Regional Rural Development Standing Working Group

giz Deutsche Gesellschaft für internationale Zusammenarbeit (GIZ) GmbH

Back to the future

- LEIWW:
 - Commissioned with 2 Mio EUR, plant grants to SWG 600.000 EUR
 - Realised funding: 1.5 Mio. EUR in 2016; 0,5 + **0,5 Mio (pending)** EUR in 2017
 - Total Volume: = 4.500.000 EUR
 - Total grants to SWG:
 - Inception = 109.545 EUR
 - General grant agreement 778.220 + 248.235,06 = 1.026.455 EUR
 - Topping-up (returnees) 265.000 + **245.000** = 510.000 EUR
 - Total = **1.646.000 EUR**
245.000 pending
- SEDRA:
 - to be commissioned with 2.2 Mio EUR in 2018, planned grants to SWG 700.000 EUR
 - Planned topping up in 2019: 1 Mio. To result in an increase of grants to SWG
 -more to come – Co-financing by third parties; other sources of german funding

Seite 23



South Eastern Europe
SWG RRD
Regional Rural Development Standing Working Group

giz Deutsche Gesellschaft für internationale Zusammenarbeit (GIZ) GmbH

Als bundeseigenes Unternehmen unterstützt die GIZ die Bundesregierung bei der Erreichung ihrer Ziele auf dem Gebiet der internationalen Zusammenarbeit für eine nachhaltige Entwicklung.

Herausgeber:
Deutsche Gesellschaft für
Internationale Zusammenarbeit (GIZ) GmbH
Eingetragener Geschäftssitz: Bonn und Eschborn,
Deutschland

Benjamin Mohr
Rural Development through Integrated Forest and Water
Resources Management in Southeast Europe (LEIWW)
Antonie Grubisic 5, 1000 Skopje, Macedonia
T +389 2 3103 569
IP +49 6196 8278001
M +389 71 382 899
F +389 2 3103 587
E-Mail: Benjamin.Mohr@giz.de
URL: www.giz.de

Verantwortlich
Benjamin Mohr, Team Leader

Verfasser
Benjamin Mohr

Seite 24