

Statistics concerning IPARD I calls

HR calls under IPARD I

	measures
Public call 1	1 and 3
Public call 2	1 and 3
Public call 3	1 and 3
Public call 4	6
Public call 5	7
Public call 6	1 and 3
Public call 7	6
Public call 8	1 and 3
Public call 9	7
Public call 10	1 and 3
Public call 11	1 and 3
Public call 12	7
Public call 13	6
Public call 14	1 and 3
Public call 15	7
Public call 16	1
Public call 17	3
Public call 18	5
Public call 19	5
Public call 20	3
Public call 21	1
Public call 22	9

MK calls under IPARD I

	measures
Public call 1	1, 3 and 7
Public call 2	1, 3 and 7
Public call 3	1, 3 and 7
Public call 4	1, 3 and 7
Public call 5	1, 3 and 7
Public call 6	1, 3 and 7
Public call 7	1, 3 and 7
Public call 8	1, 3 and 7
Public call 9	1, 3 and 7
Public call 10	1, 3 and 7
Public call 11	1, 3 and 7
Public call 12	1, 3 and 7

TR calls under IPARD I

	measures
Public call 1	1, 3 and 7
Public call 2	1, 3 and 7
Public call 3	1, 3 and 7
Public call 4	1, 3 and 7
Public call 5	1, 3 and 7
Public call 6	1, 3 and 7
Public call 7	1, 3 and 7
Public call 8	1, 3 and 7
Public call 9	1, 3 and 7
Public call 10	1, 3 and 7
Public call 11	1, 3 and 7
Public call 12	1, 3 and 7
Public call 13	1, 3 and 7
Public call 14	1 and 3
Public call 15	1, 3 and 7

measure names under IPARD II

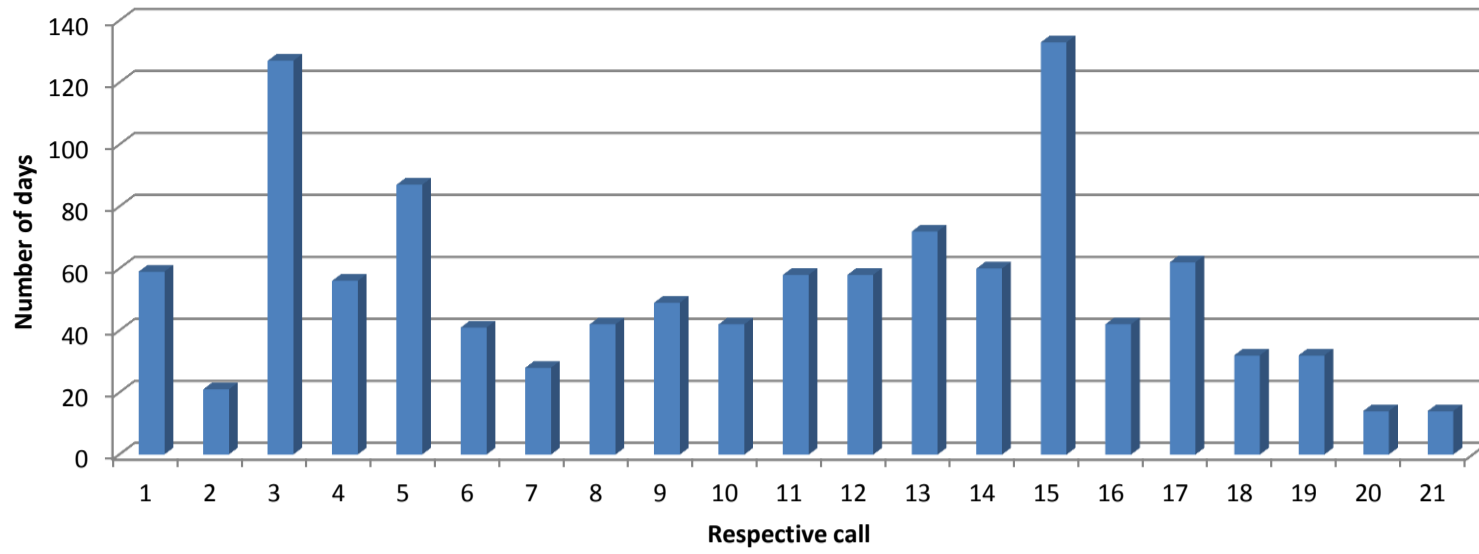
(1) investments in physical assets of agricultural holdings;
(3) investments in physical assets concerning processing and marketing of agricultural and fishery products;
(5) implementation of local development strategies - LEADER approach;
(6) investments in rural public infrastructure;
(7) farm diversification and business development;
(9) technical assistance;

In case only 8 calls are displayed for HR, the link between the number and the call is:
(These 8 calls represent calls for measure 1/3 together)

- 1 >> call 1
- 2 >> call 2
- 3 >> call 3
- 4 >> call 6
- 5 >> call 8
- 6 >> call 10
- 7 >> call 11
- 8 >> call 14

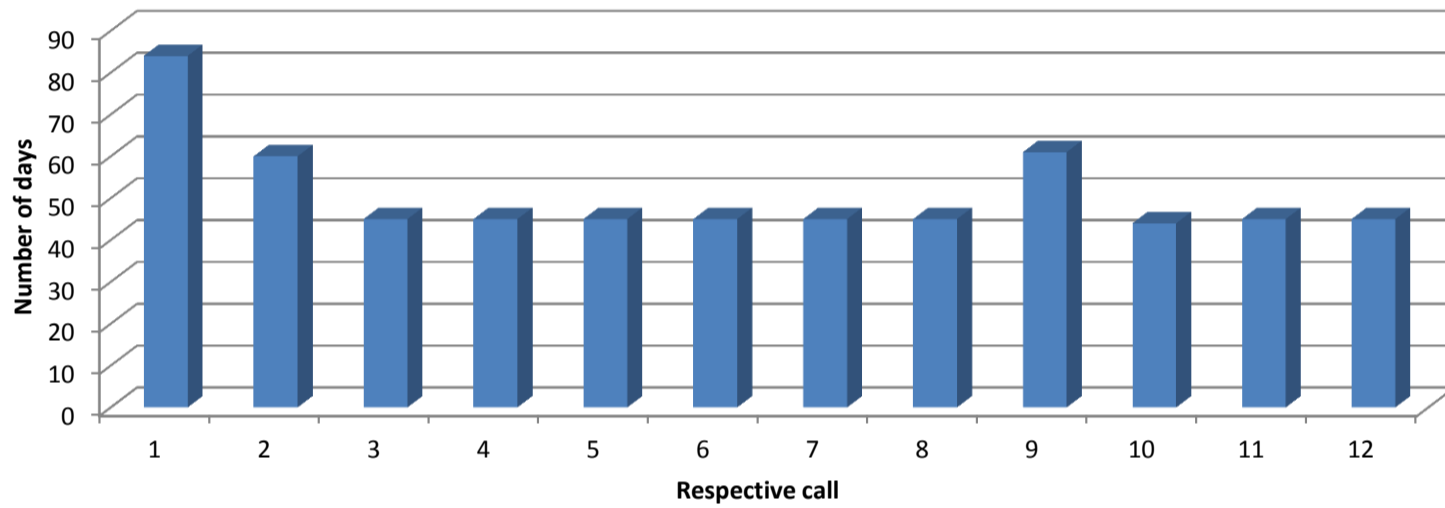
Number of days the call is open_HR

Average: 53,8 days



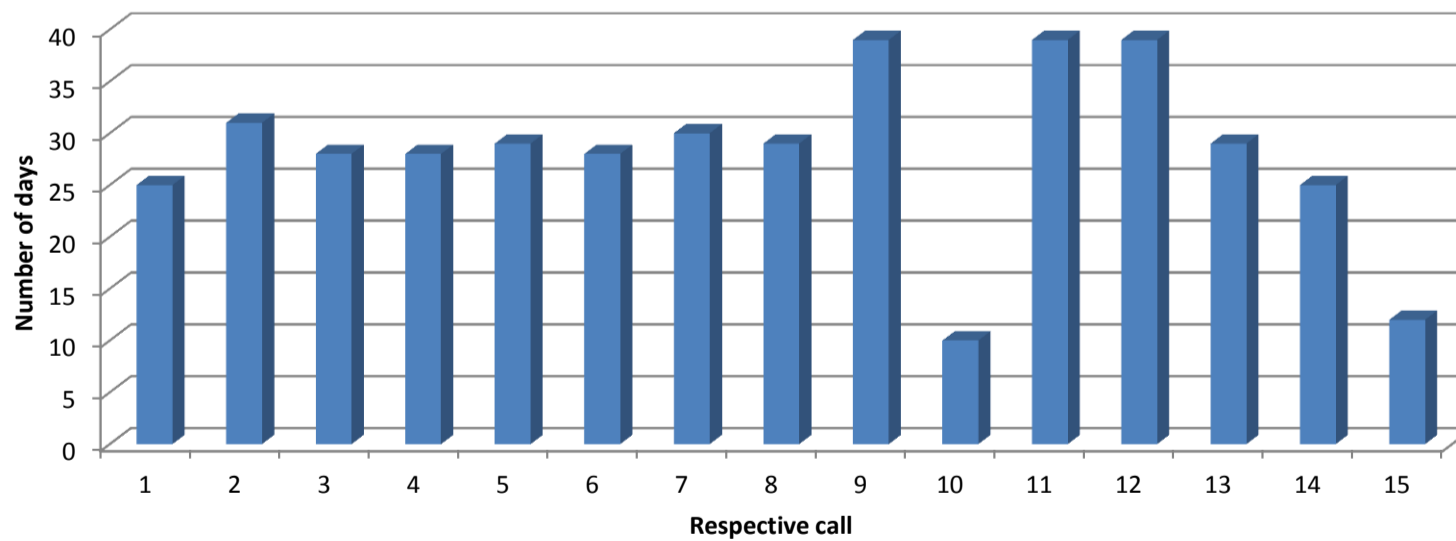
Number of days the call is open_MK

Average: 50,8 days

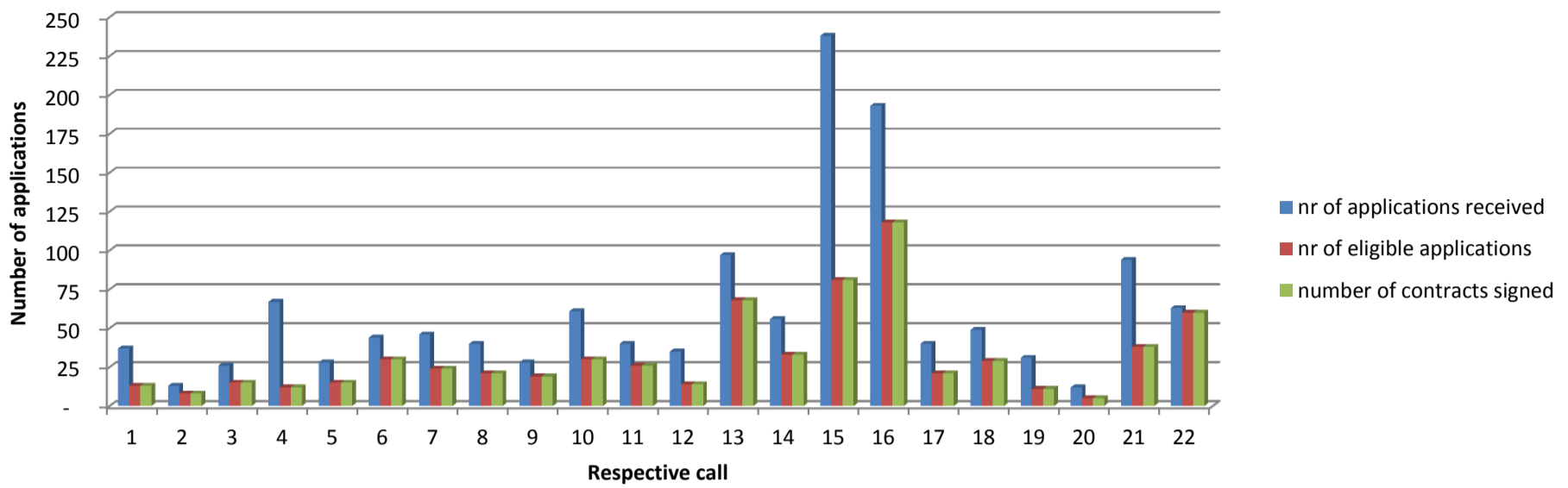


Number of days the call is open_TR

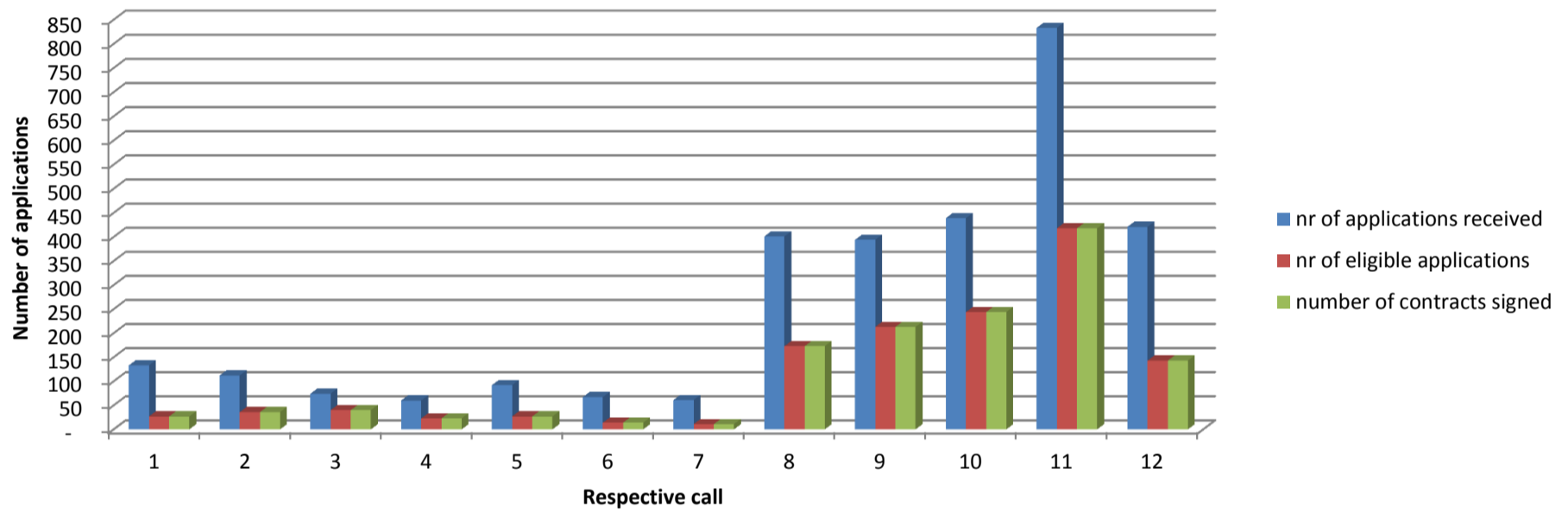
Average: 28,1 days



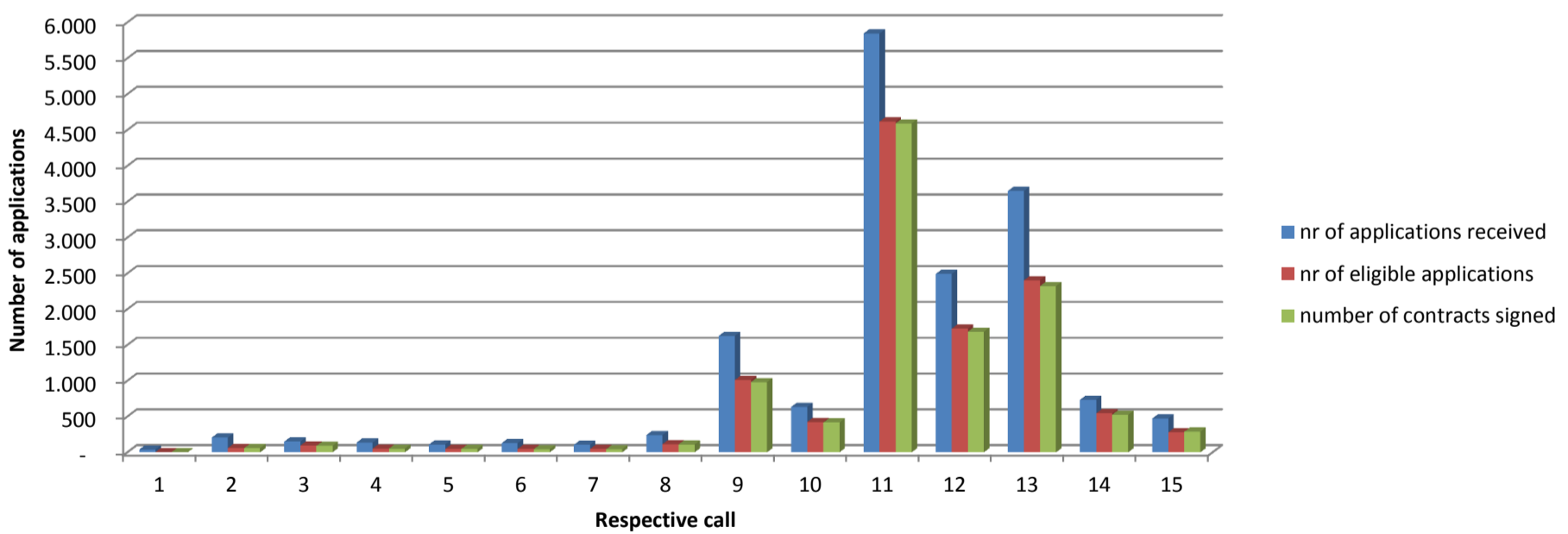
Number of applications per call_HR



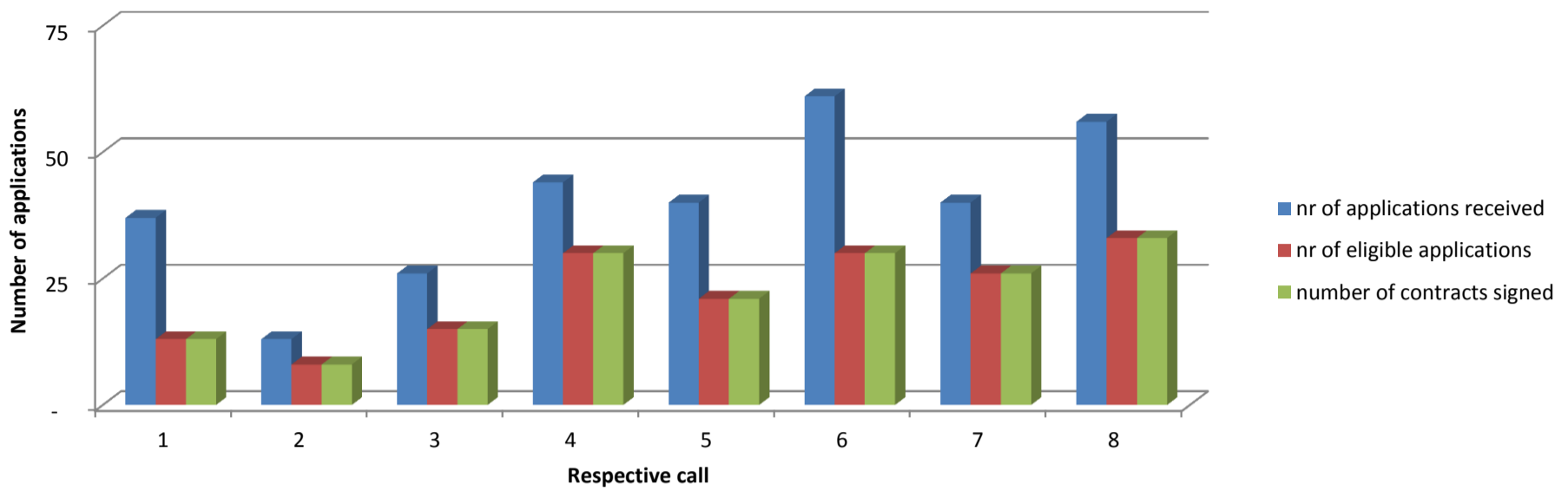
Number of applications per call_MK



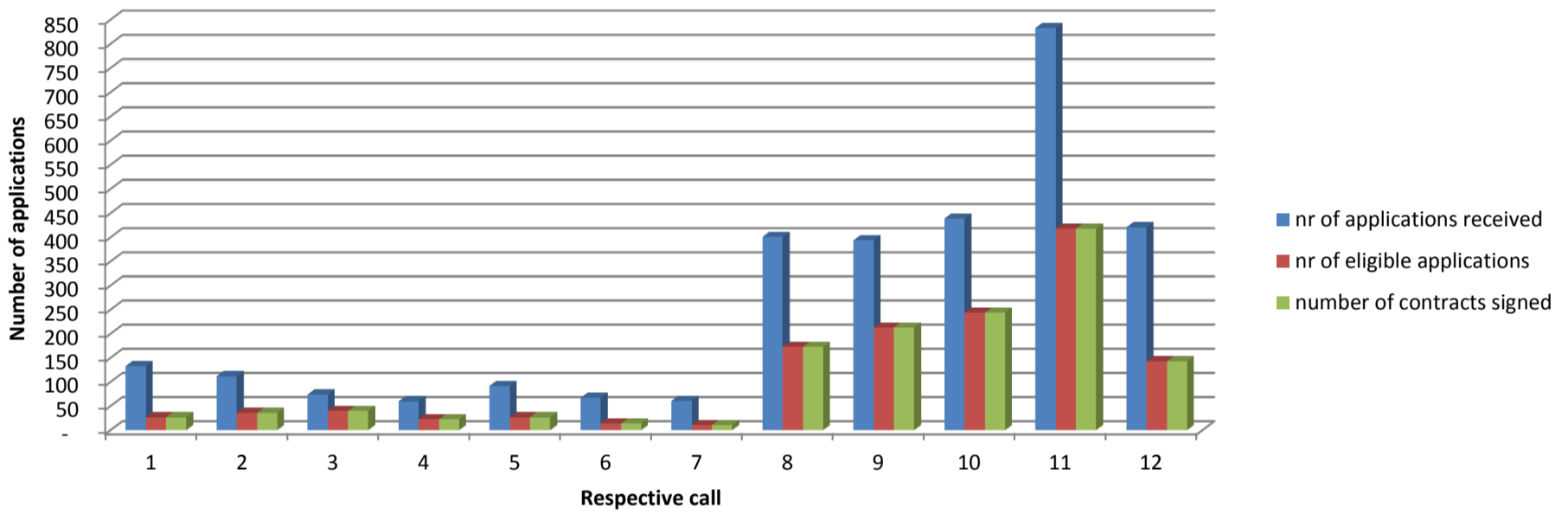
Number of applications per call_TR



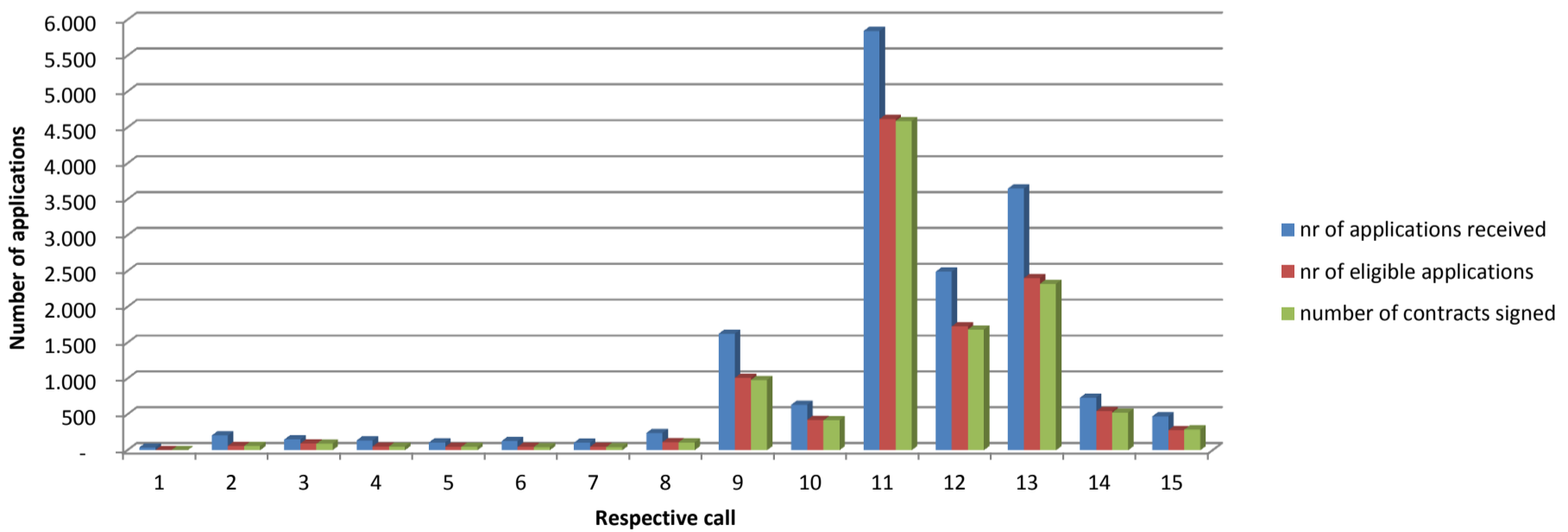
Number of applications per call_HR



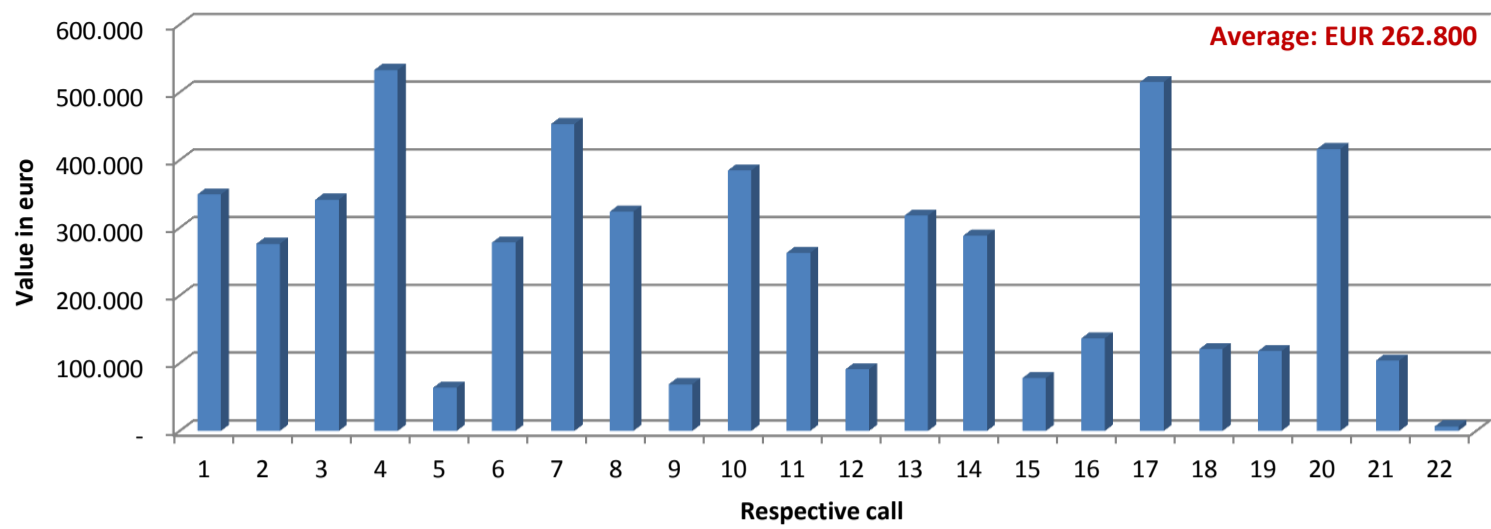
Number of applications per call_MK



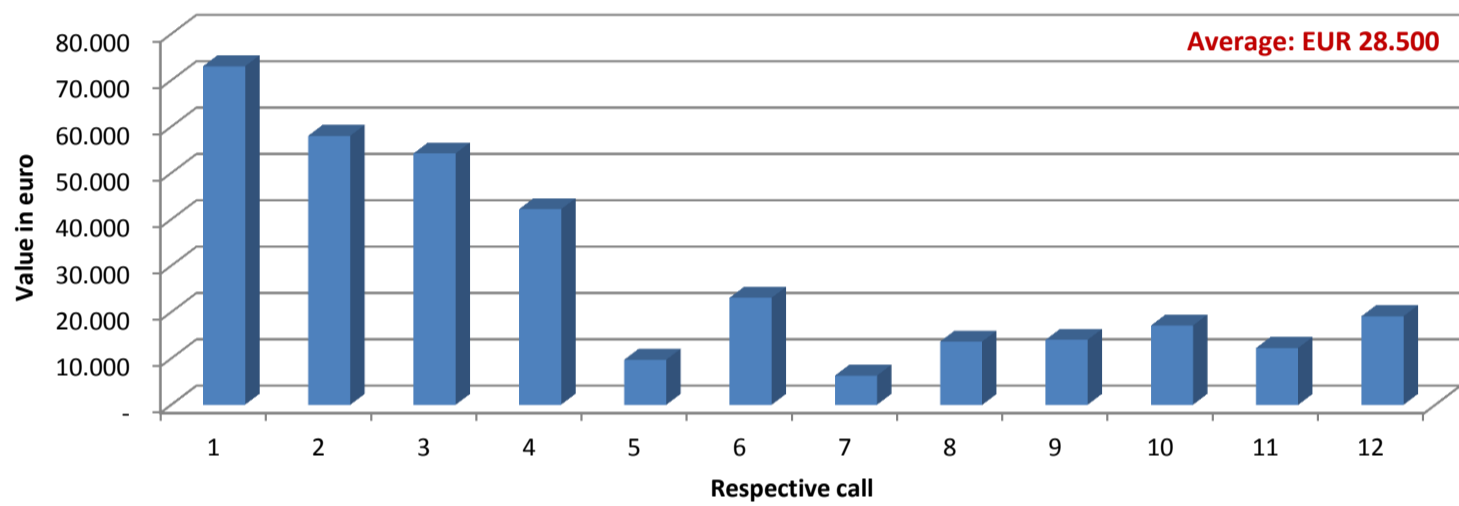
Number of applications per call_TR



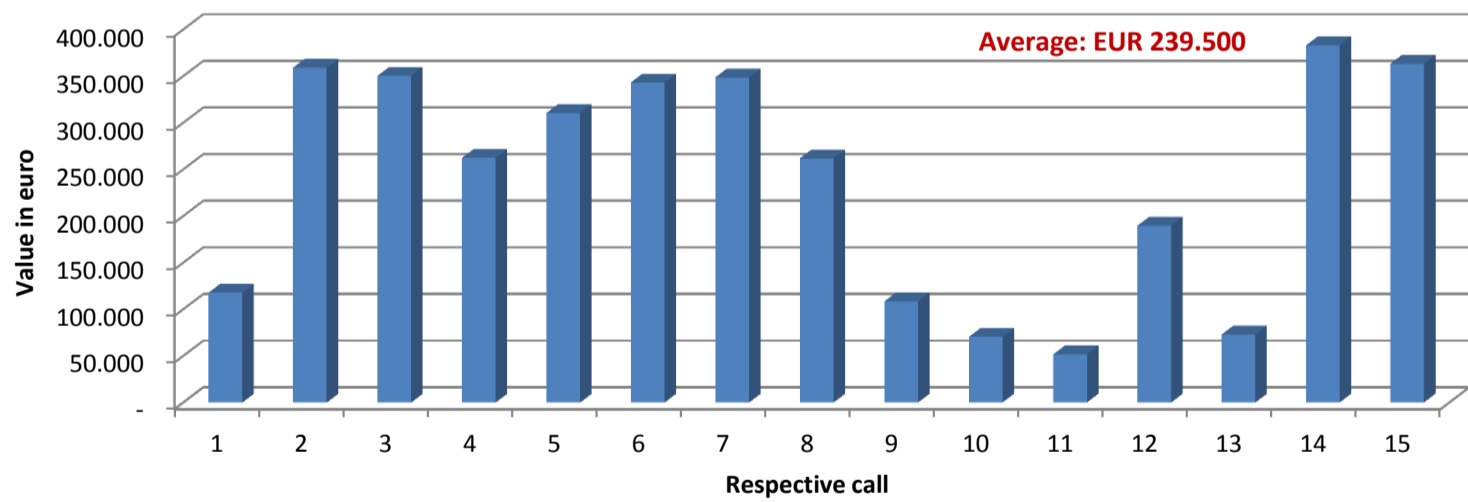
Average value of a contracted project (public expenditure)_HR



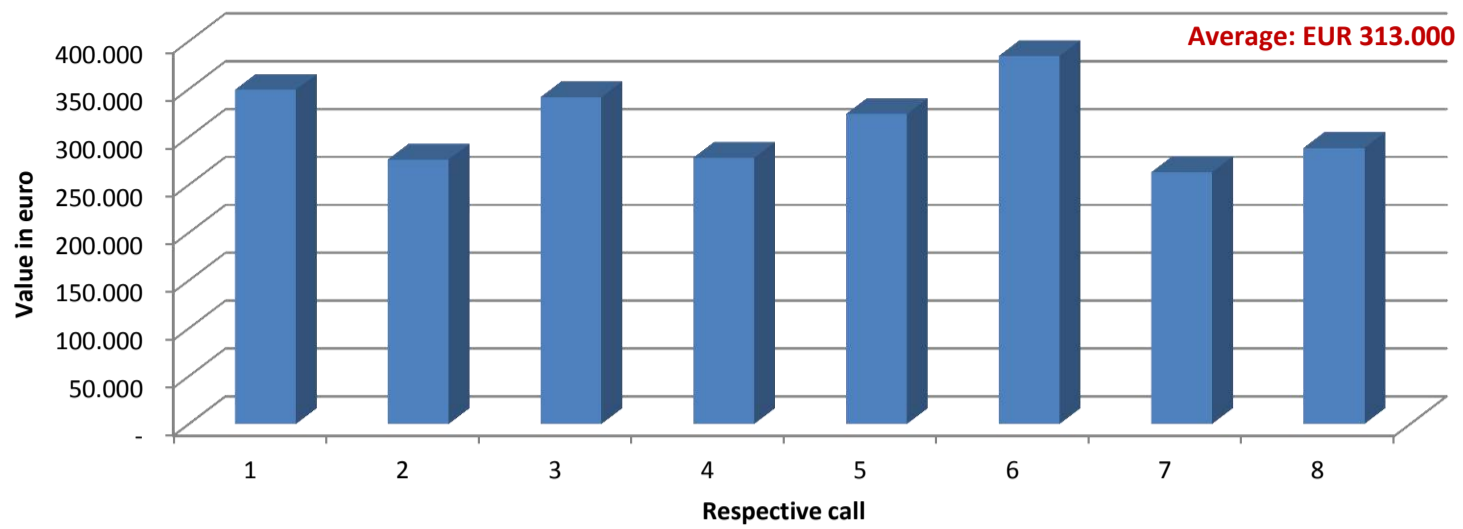
Average value of a contracted project (public expenditure)_MK



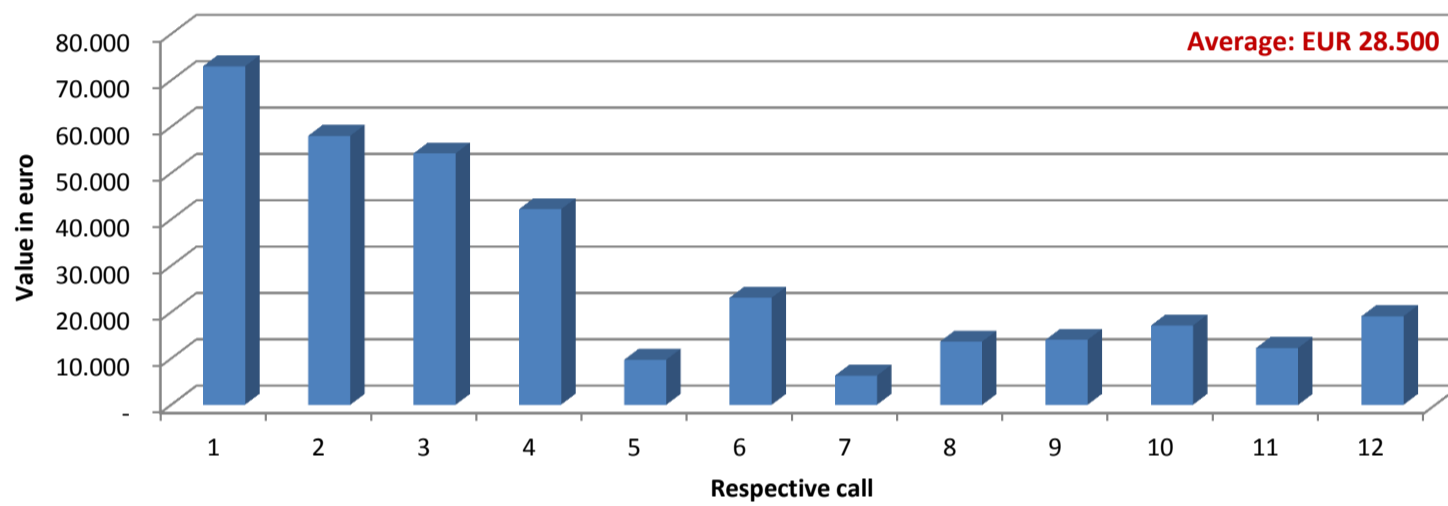
Average value of a contracted project (public expenditure)_TR



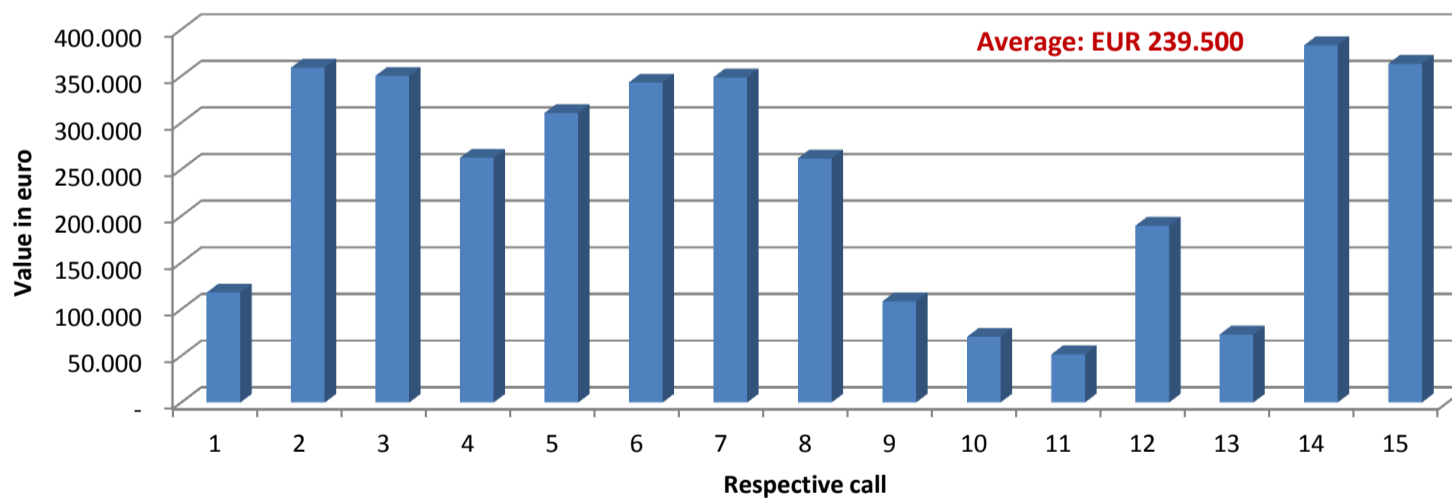
Average value of a contracted project (public expenditure)_HR



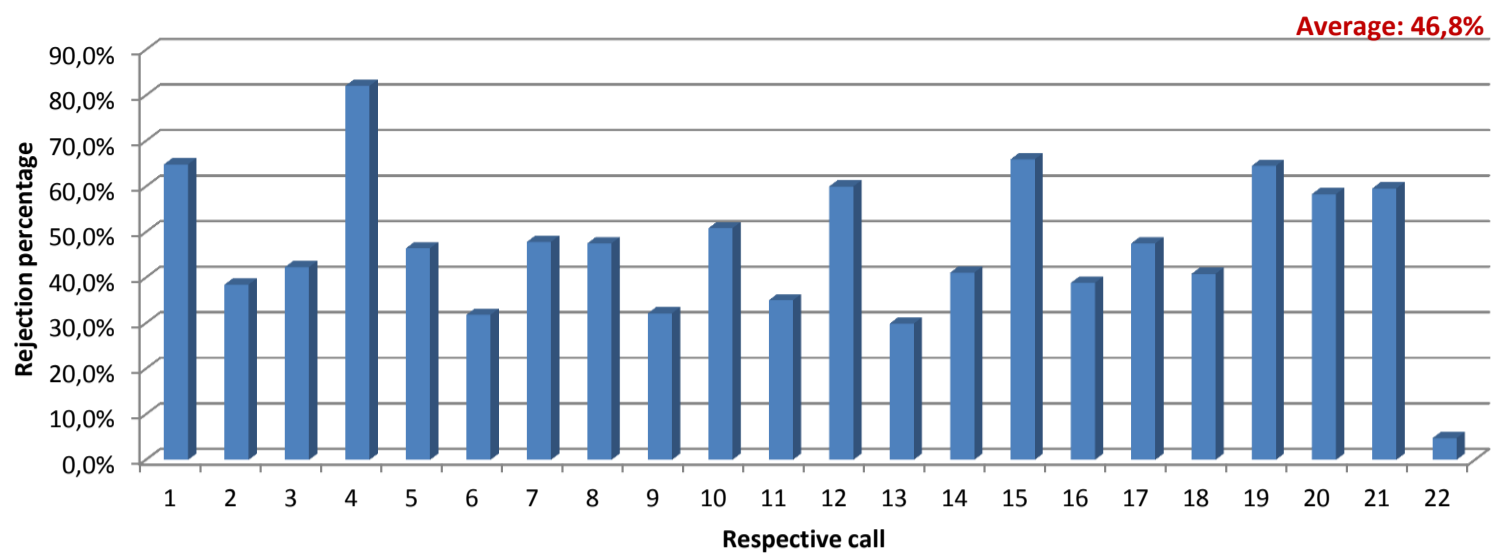
Average value of a contracted project (public expenditure)_MK



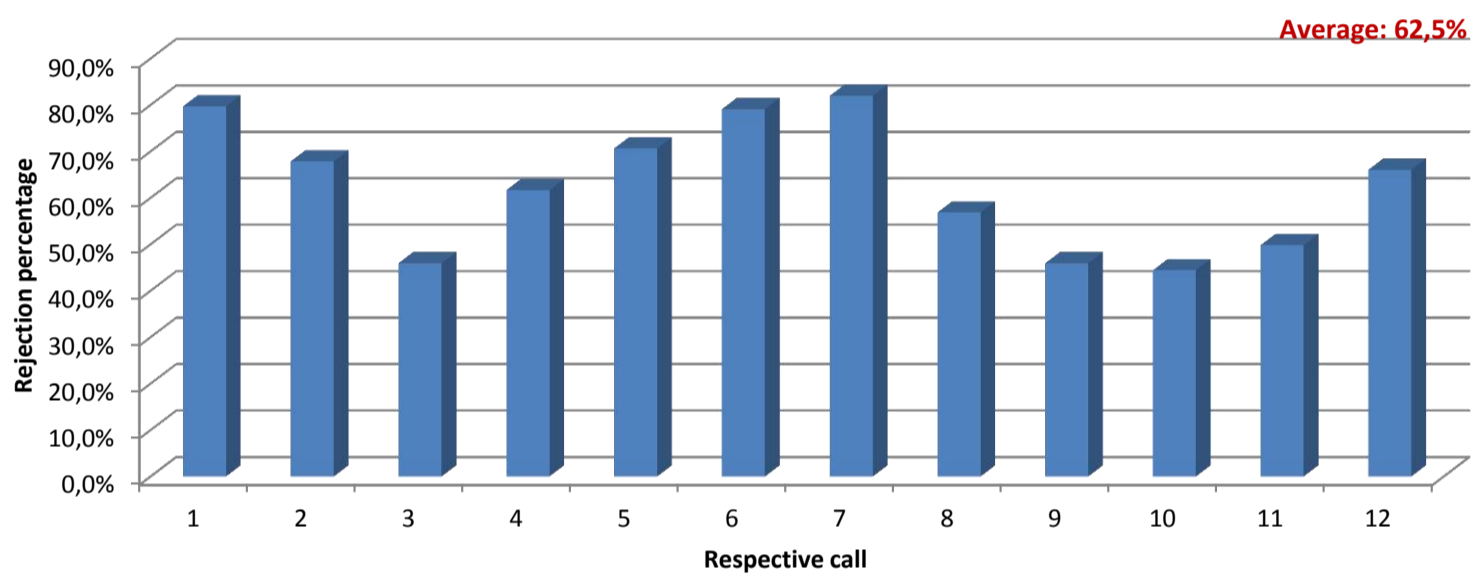
Average value of a contracted project (public expenditure)_TR



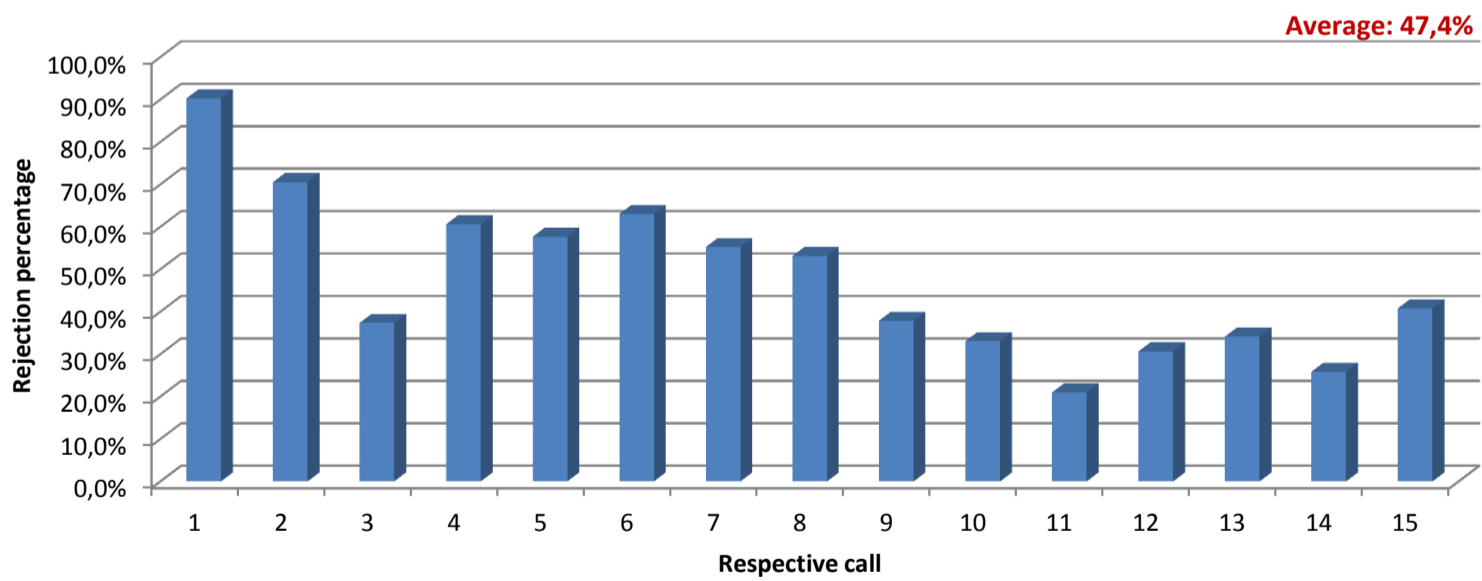
Rejection rate_HR



Rejection rate_MK

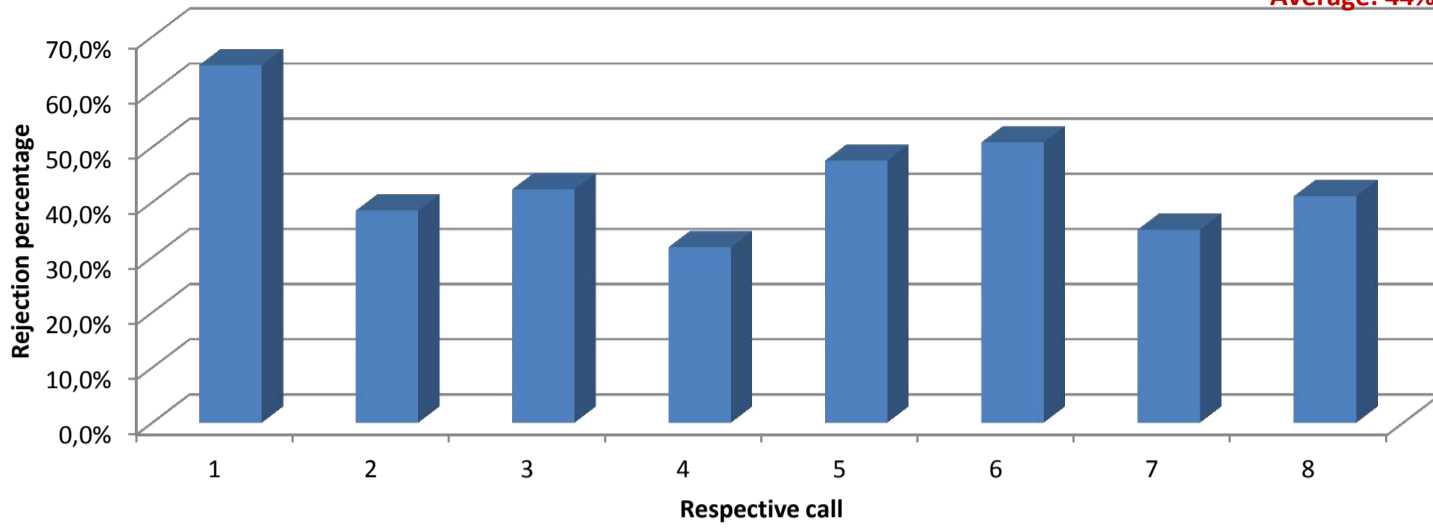


Rejection rate_TR



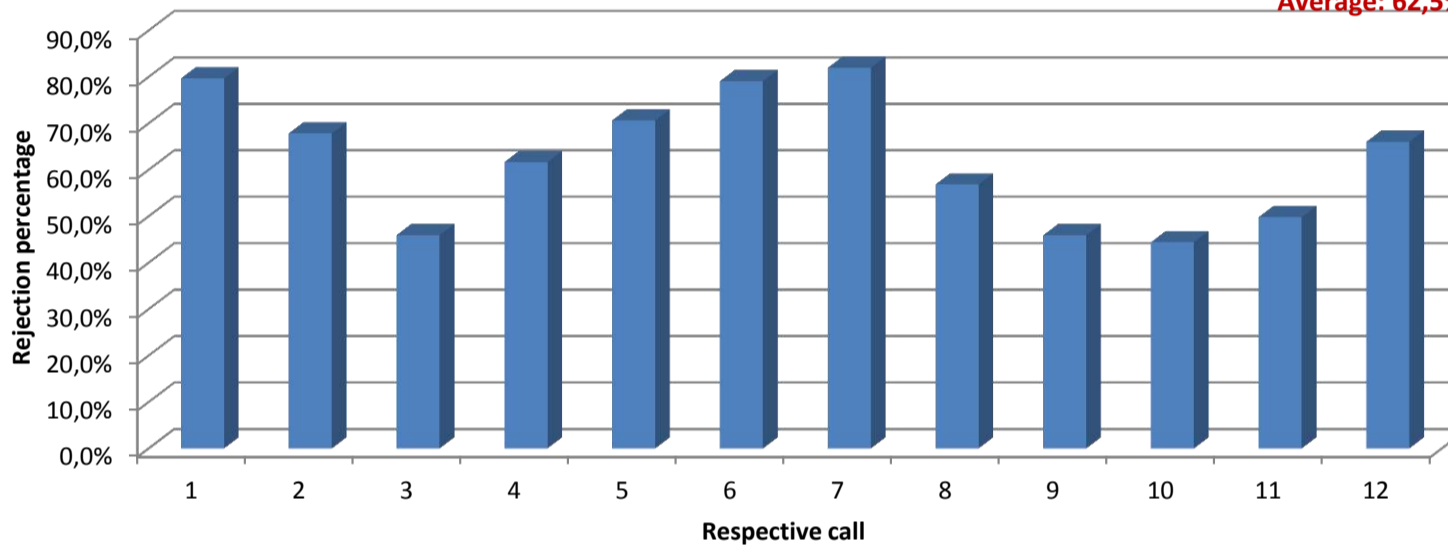
Rejection rate_HR

Average: 44%



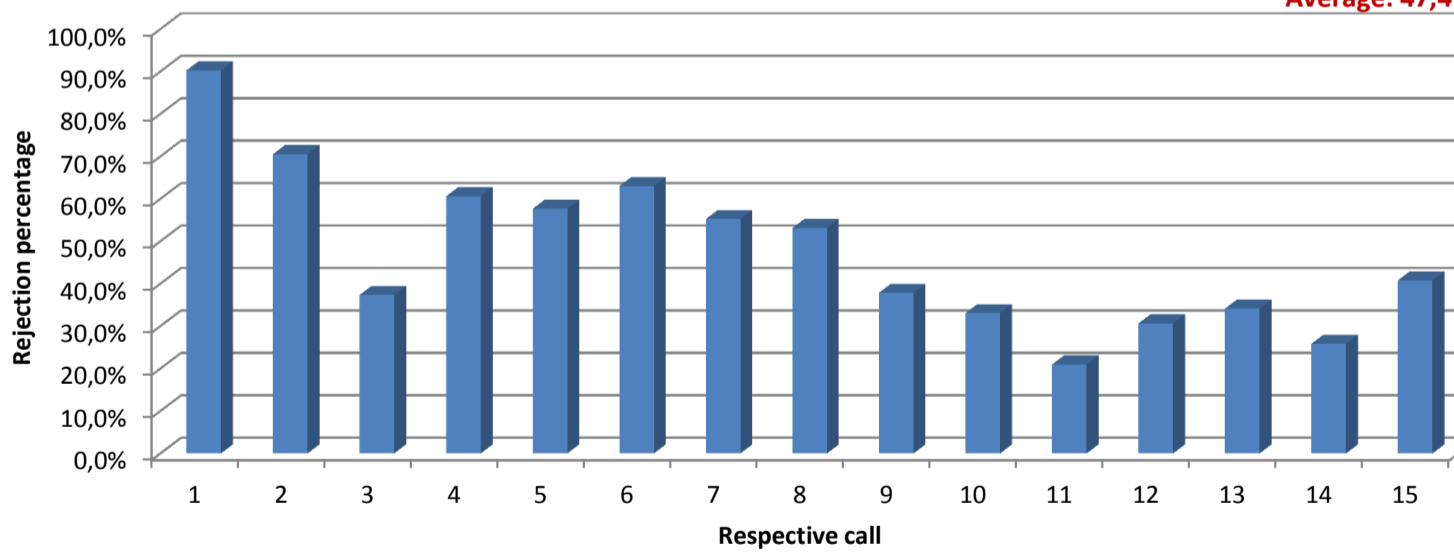
Rejection rate_MK

Average: 62,5%

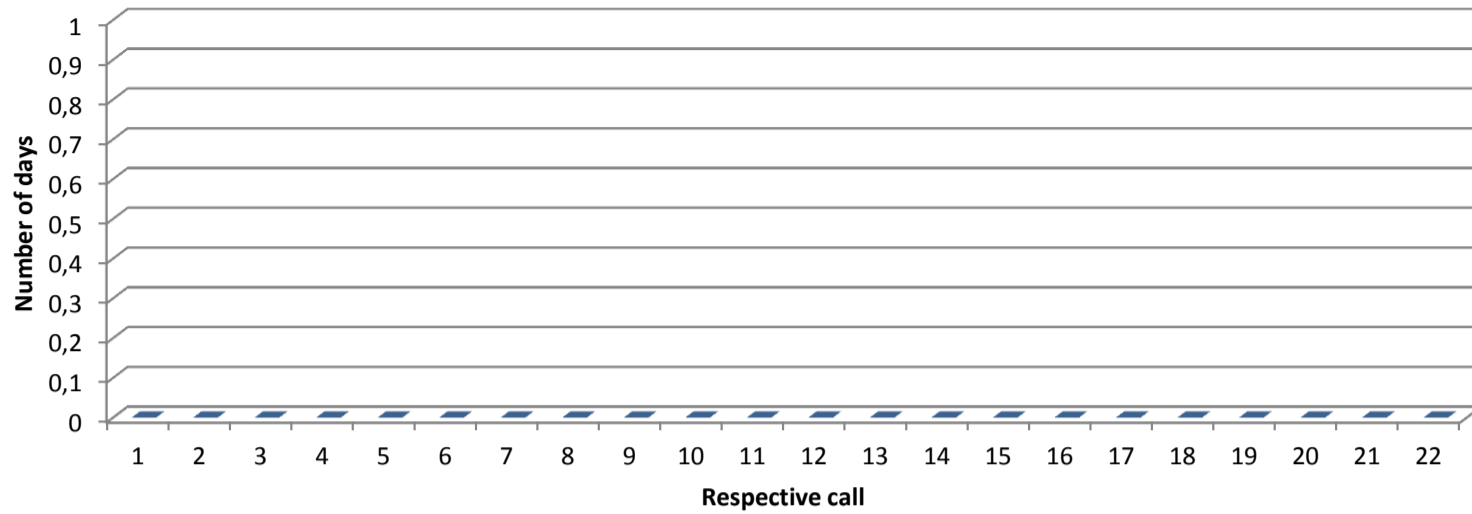


Rejection rate_TR

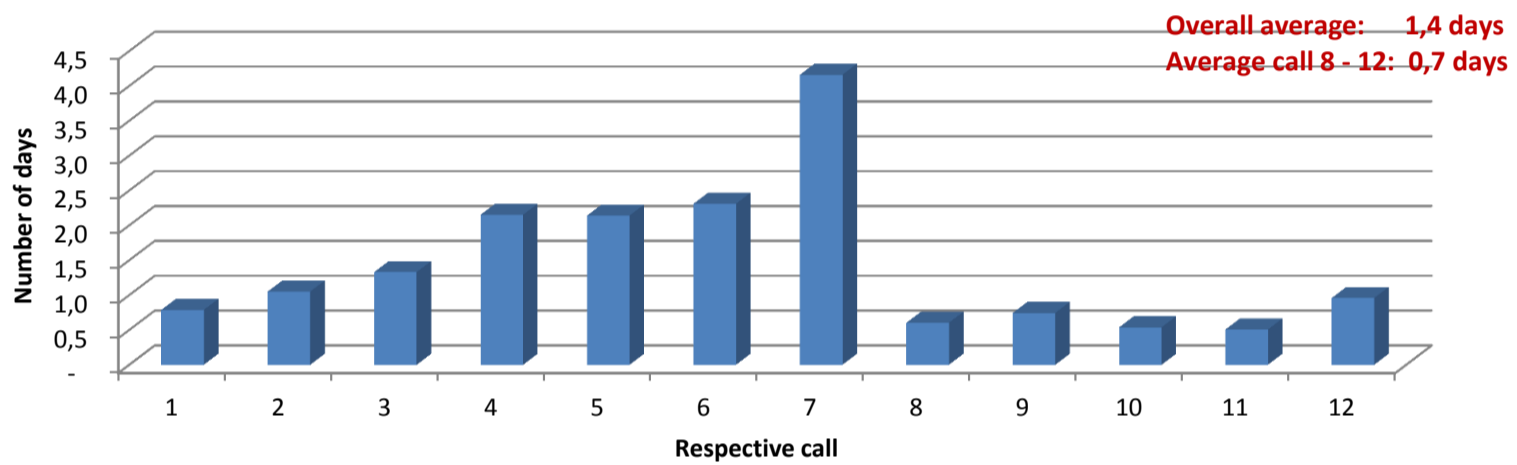
Average: 47,4%



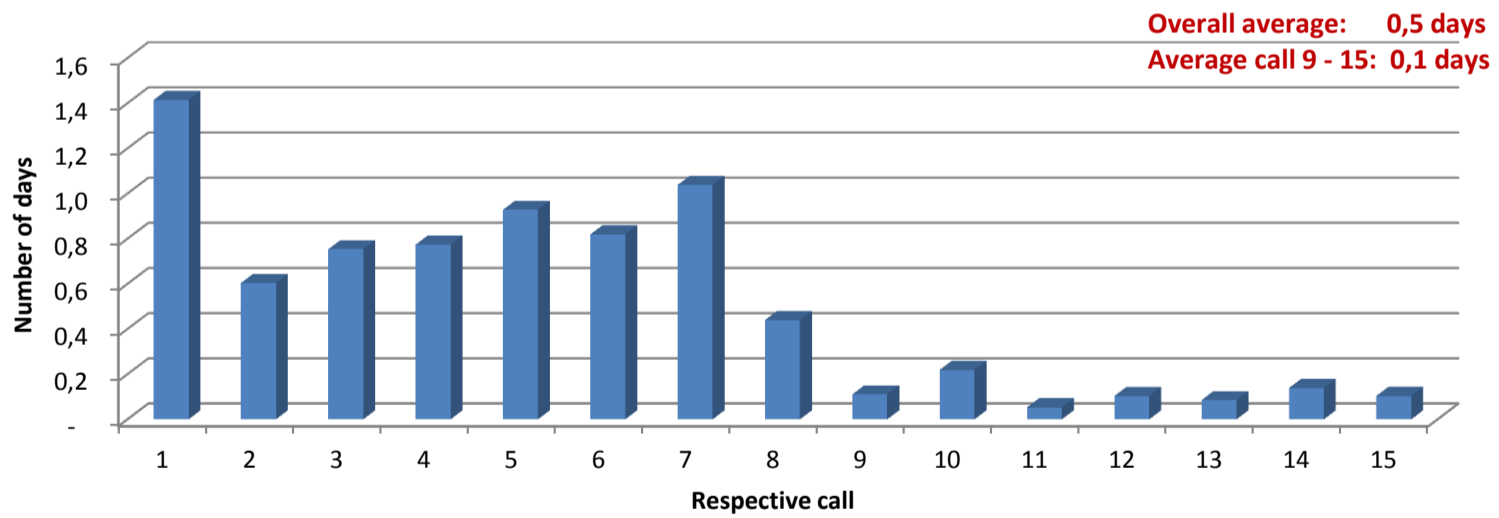
Number of days needed per file to do the eligibility check_HR_no data provided by HR



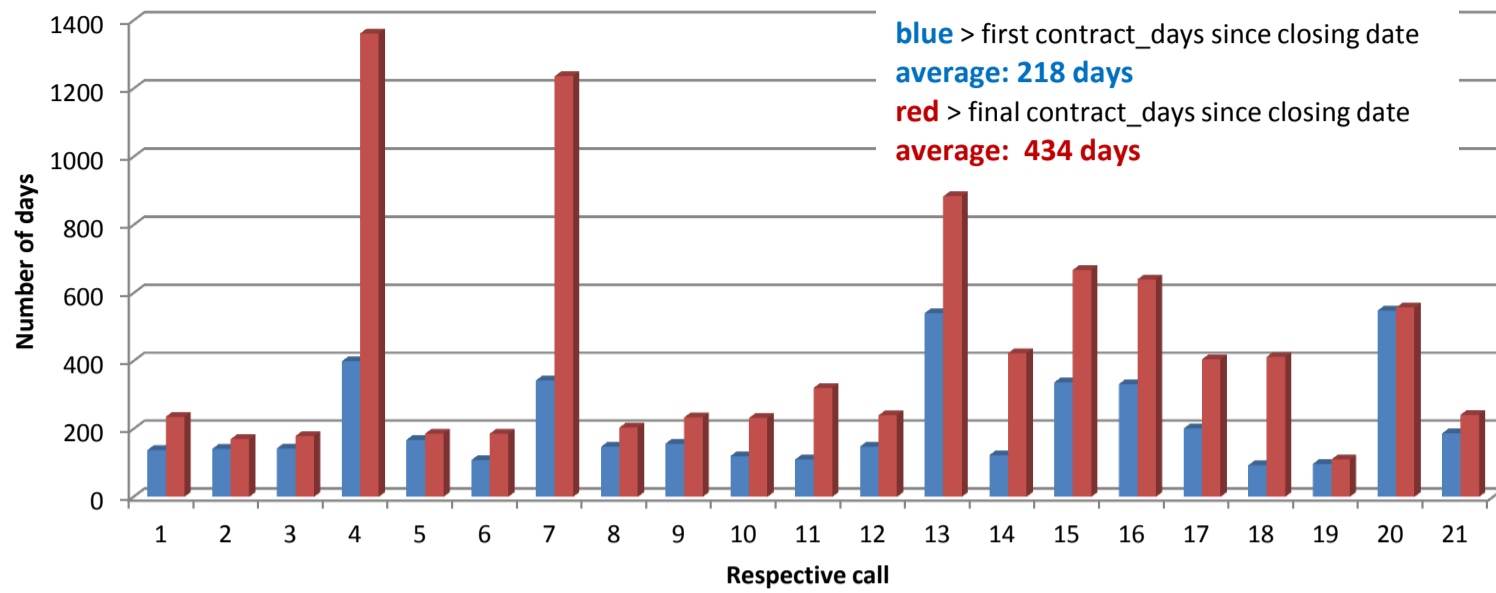
Number of days needed (per file) to do the eligibility check_MK



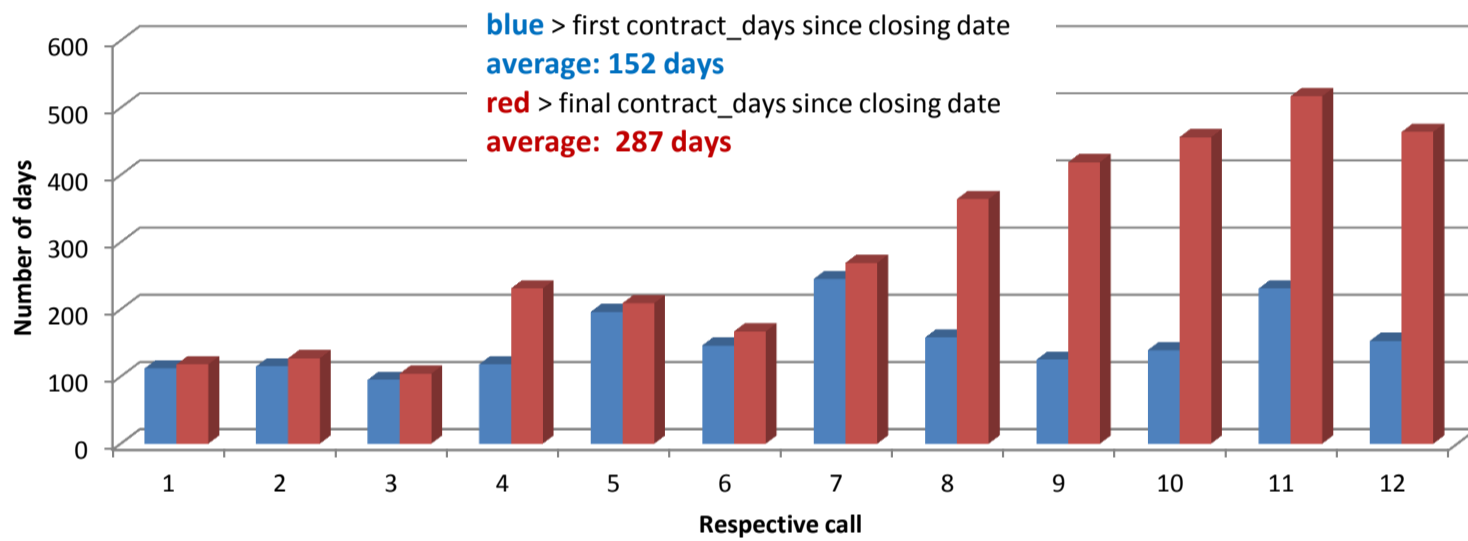
Number of days needed (per file) to do the eligibility check_TR



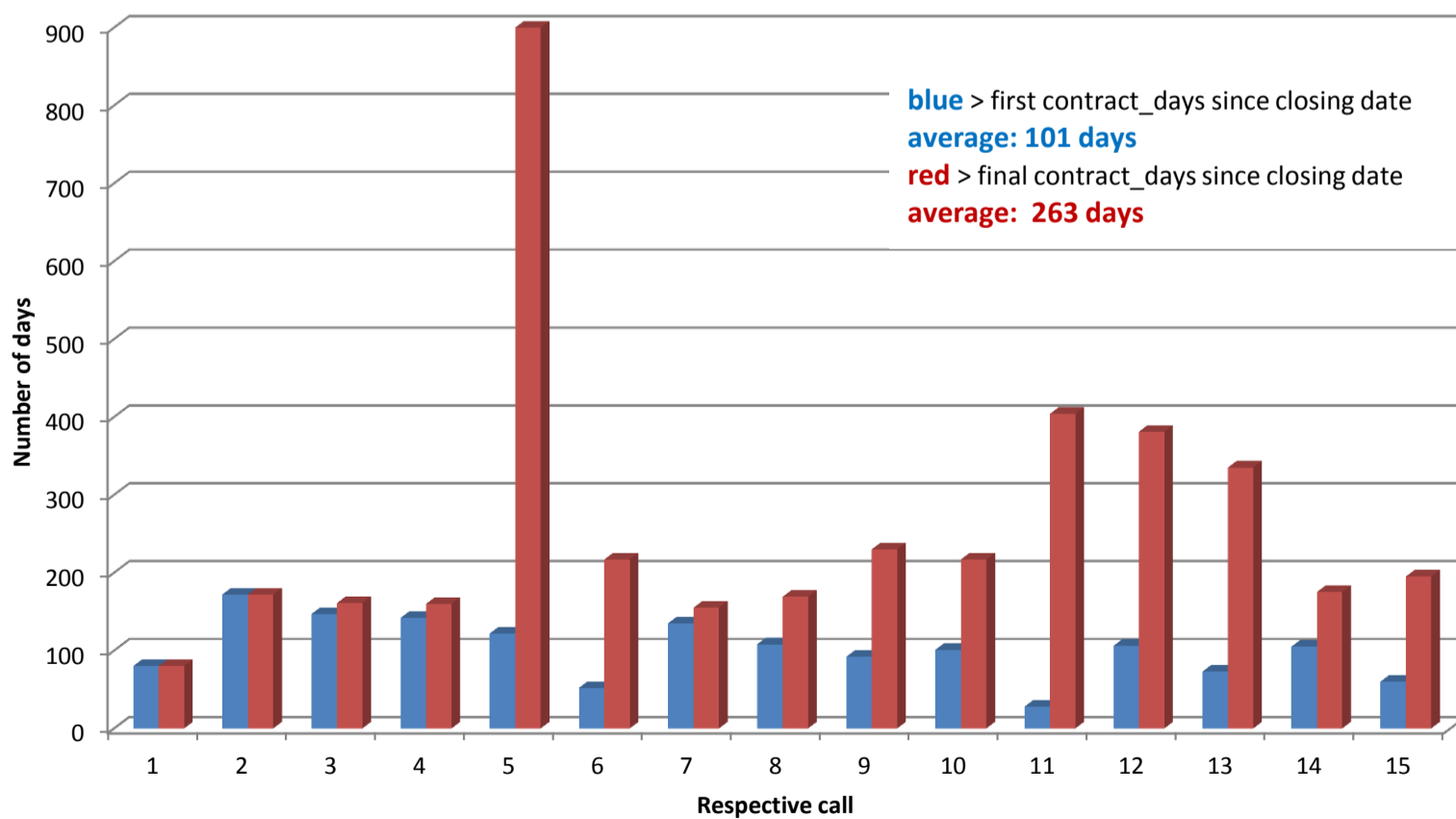
Number of days needed to process the file_contracting_HR



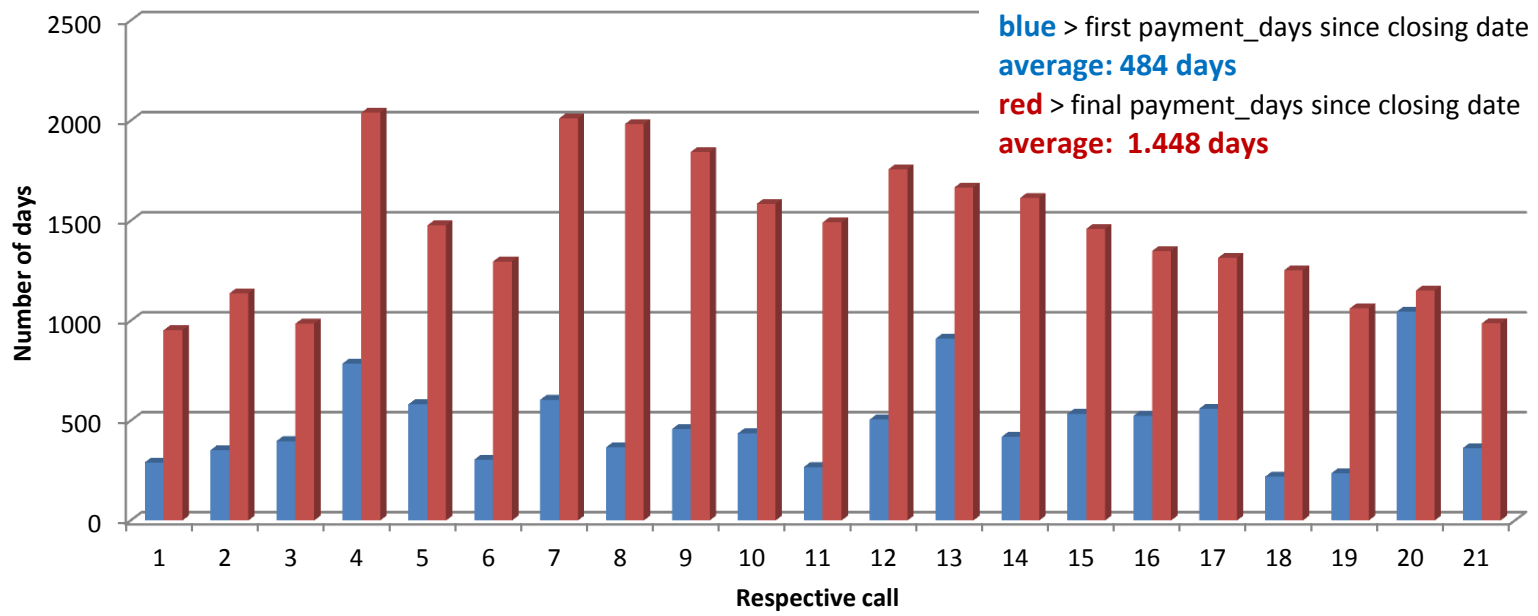
Number of days needed to process the file_contracting_MK



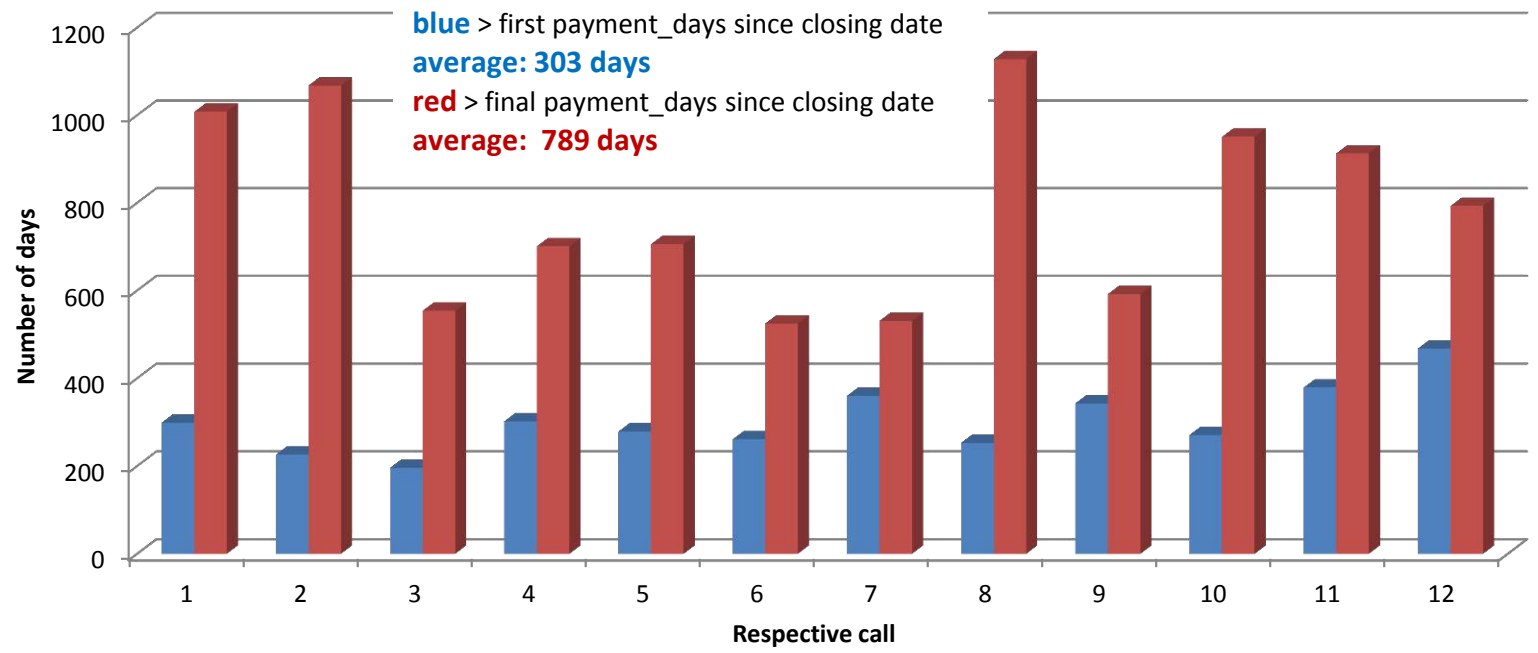
Number of days needed to process the file_contracting_TR



Number of days needed to process the file_paying_HR



Number of days needed to process the file_paying_MK



Number of days needed to process the file_paying_TR

