

# Strategic policy advice and process management to boost capacities to implement Community- Led Local Development (CLLD) and LEADER in Southeast Europe



June 24<sup>th</sup>, 2020  
Online meeting

## Kosovo Case

**Prof. Dr. Mihone Kerolli-Mustafa**

# Introduction

- The rural development strategy promotes sustainable development in Kosovo's rural areas addressing economic, social and environmental concerns.
- Over 62 % of Kosovo's population lives in rural areas and the application of Leader in line with EU rural development policy represents an important and innovative approach.
- The implementation of the LEADER programme in Kosovo is addressed through the following strategic policy documents: 1) strategies for agriculture and rural development, 2) mid-term programmes, 3) IPARD II programmes and 4) strategic and other documents on local development strategy.

## STRENGTHS

- Existing LAGS and Network
- Cross-section of sectors represented
- Existing Local Development Strategies

## WEAKNESSES

- Limited capacities of LAGs
- Stakeholder engagement
- Lack of financial resources

# SWOT

## OPPORTUNITIES

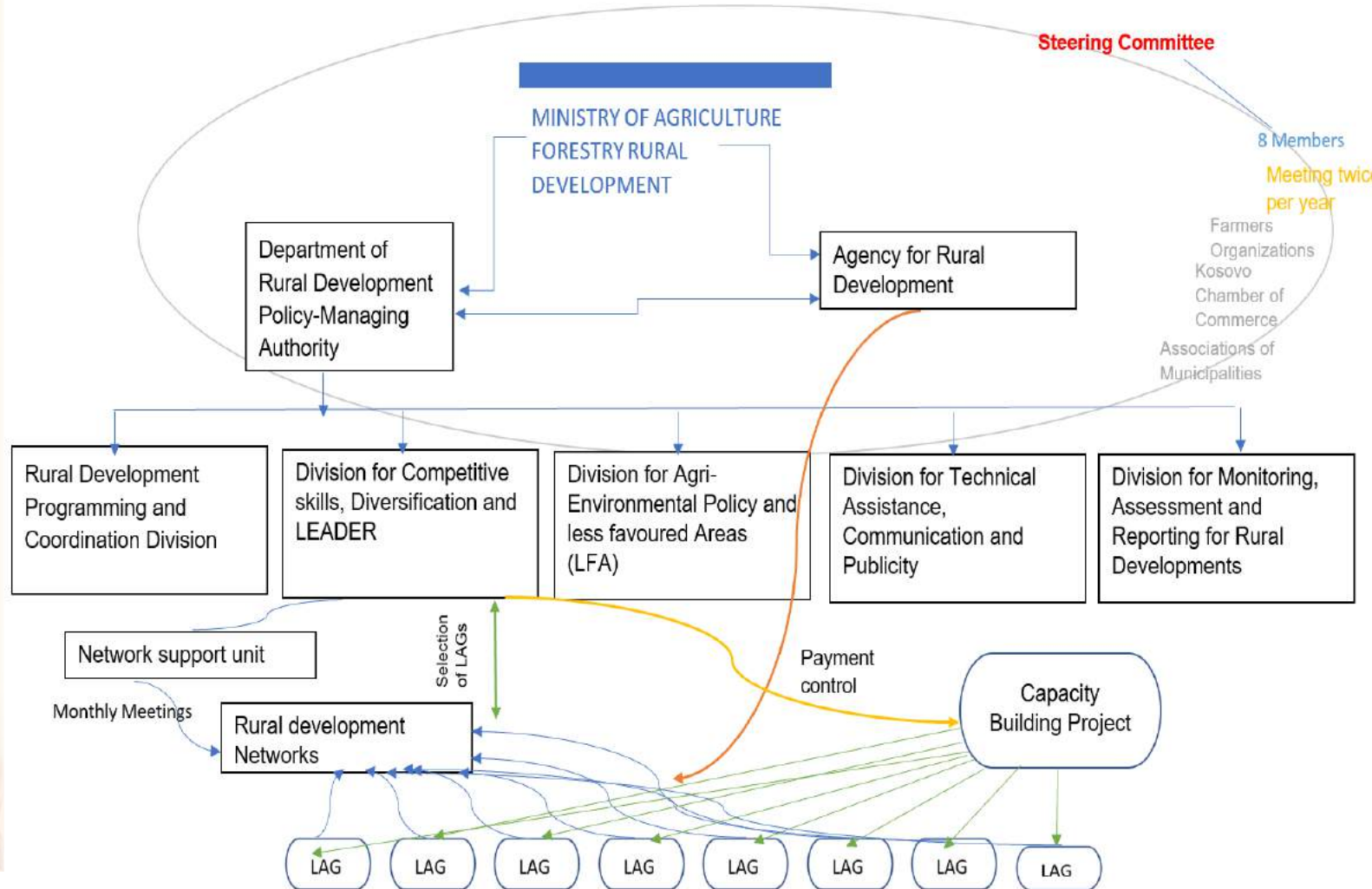
- Cooperation between LAGs and relevant institutions
- Knowledge transfer through networks
- Review of local development

## THREATS

- Often changes of the Governmental Structures
- Immigration
- Regulations not in line with market trends

# Steering Structure

SWG RRD



# Core Processes: Managing Authorities

- IPARD preparation, certification and implementation
- Call for proposals, check the eligibility and select the LAGs
- Commissioning and supervising the Network Support Unit
- Funding (budgeting, disbursement, control)
- Monitoring and evaluation
- Reporting
- Information and Publicity

# Core Processes: Rural Development Network

- Capacity building of rural stakeholders and LAGs
- National, regional, international networking
- Evaluation and Learning

SWG  
RDRD

## Core Processes: LAGs

- Creating and managing the local partnership
- Local animation and capacity building
- Project support and project management

## Priorities: Managing Authorities

- Implementation of Local Development Strategies - Leader Approach (ARDP, donor support schemes);
- To stimulate knowledge transfer and help promote social and economic inclusion by supporting LAGs and farmers in rural areas;
- Informing and training local people to prepare and implement local development strategies including the management of their LAGs.



# Priorities: Rural Development Network

- Promoting cooperation among LAGs in Kosovo and international cooperation;
- Activating the involvement of various groups of rural stakeholders and building/strengthening sustainable partnerships through the existing Local Action Groups (LAGs);
- To develop civil society and social dialogue within the rural population, facilitate good governance through local partnerships and foster employment and develop human capital.

## Priorities: LAGs

- Participate in the decision-making and contribute to the develop human capital to increase the ability to cope with competitive pressure and market forces as well as to improve the life in rural areas;
- Participate in the national rural development network;
- Ensure adequate levels of technical and economic knowledge and skills in LAG management, product quality and safety and market skills.

# Road Map

## MA

- LDS are further supported through the funding of viable, community-led projects

- RD Strategies are further promoted through local initiatives and private public partnership

- The capacity among rural inhabitants and LAG members is enhanced through training and education

## RDN

- New partnerships established

- The effectiveness and sustainability of LAGs in the target municipalities are enhanced through capacity development and

- The participation of rural inhabitants, LAGs, other stakeholders are improved in the decision-making process of rural development

## LAGs

- The capacity among rural inhabitants and LAG members is enhanced through training and education

- Secured effective project management

- Encourage other inhabitants to be activated in the process of cooperation through meetings and other forums

**Thank you!**

SWG  
RRD