

giz



Rural development by integrated forest and water resource management in South-East-Europe LEIWW

- introduction and inception phase -

Benjamin Mohr

33rd Meeting of the Assembly of Regional Rural Development
Standing Working Group (SWG) in South Eastern Europe





Rural development by integrated forest and water resource management in South-East-Europe – Benjamin Mohr 10.09.15. page. 1

giz Rural development by integrated forest and water resource management in South-East-Europe - LEIWW



- The project, with a duration of 3 years,
 - is commissioned by the German Federal Ministry for Economic Cooperation and Development (BMZ)
 - aims to build capacities for rural development, sustainable forest and water resource management
 - targets 6 countries in South-East-Europe: Albania, Bosnia and Herzegovina, Kosovo*, Former Yugoslav Republic of Macedonia, Montenegro and Serbia
 - works on regional, national and local level
 - Lead executing agencies are the Ministries of Agriculture, through their membership in the SWG
 - The SWG RRD is the main implementing partner of the project




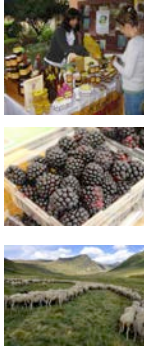


*This designation is without prejudice to positions on status, and is in line with UNSCR 1244 and the ICJ Opinion on the Kosovo Declaration of Independence.

Rural development by integrated forest and water resource management in South-East-Europe – Benjamin Mohr 10.09.15. page. 2

giz Rural development by integrated forest and water resource management in South-East-Europe - LEIWW

- The three central fields of activity are:
 1. Regional intersectoral coordination at the interface between rural development, agriculture, forest and water
 - Contribution to multi-stakeholder, regional strategy processes


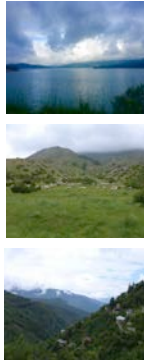



*This designation is without prejudice to positions on status, and is in line with UNSCR 1244 and the ICJ Opinion on the Kosovo Declaration of Independence.

Rural development by integrated forest and water resource management in South-East-Europe – Benjamin Mohr 10.09.15. page. 3

giz Rural development by integrated forest and water resource management in South-East-Europe - LEIWW

- The three central fields of activity are:
 2. Integration of environmental objectives into national rural development and agriculture policies in line with the targets of the EU accession processes
 - Development of evidence-based policy recommendations to address environmental objectives within agriculture policies

*This designation is without prejudice to positions on status, and is in line with UNSCR 1244 and the ICJ Opinion on the Kosovo Declaration of Independence.

Rural development by integrated forest and water resource management in South-East-Europe – Benjamin Mohr 10.09.15. page. 4

giz Rural development by integrated forest and water resource management in South-East-Europe - LEIWW

- The three central fields of activity are:
 - a) Planning and implementation of integrated forest and water management approaches in cross-border regions
 - b) Income generation and diversification based on the use of natural resources in cross-border regions

Measures of integrated water and forest resources management

Income generation by sustainable use of natural resources, with a focus on economic activities of women

*This designation is without prejudice to positions on status, and is in line with UNSCR 1244 and the ICJ Opinion on the Kosovo Declaration of Independence.

Rural development by integrated forest and water resource management in South-East-Europe – Benjamin Mohr 10.09.15. page. 5

giz Rural development by integrated forest and water resource management in South-East-Europe - LEIWW

The challenge of the inception phase is:

- ...to develop a inclusive programme strategy, responding to the needs and demands of:
 - Local realities of cross-border-regions
 - National priorities
 - Regional processes
- ... to use and add value to existing structures and processes
- SWG and it's partner operate the following formats, that will help to develop inputs for project inception:
 - Assembly Sessions
 - Agricultural Policy Forum
 - Ministerial Meeting of the Ministries of Agriculture
 - Expert Advisory Working Groups
 - Representative Stakeholder groups from cross-border-regions

Rural development by integrated forest and water resource management in South-East-Europe – Benjamin Mohr 10.09.15. page. 6

giz Rural development by integrated forest and water resource management in South-East-Europe - LEIWW 

Inputs for the programme are available:

- Regional strategies, priorities and assessments
- National strategies, policies and assessments
- Existing regional cooperation platforms
- Scientific feasibility studies, working papers and technical working groups
- Existing cooperation in cross-border regions, including cross-border development plans and project proposals
- Lessons learned from and interfaces with projects and initiatives supported by various development partners
- Set of Instruments for pre-accession assistance (IPA II)
- experience from previous GIZ projects with the SWG
- EU directives, acquis communautaire, strategies and policies as guiding frame



Rural development by integrated forest and water resource management in South-East-Europe – Benjamin Mohr 10.09.15. page. 7

giz Rural development by integrated forest and water resource management in South-East-Europe - LEIWW 

The inception phase:

- ...will build on existing formats to match priorities from the region with the objectives and means of the programme .
- Regional and National:
 - Assembly of SWG and the Agricultural Policy Forum
 - Ministerial Meeting of the Ministries of Agriculture
 - Expert Advisory Working Groups
 - The Regional Working Group on Environment
- potential partner for environmental objectives?
- Local cross-border regions
 - Representative Stakeholder groups from cross-border-regions: identification of local pilot measures for natural resource management and income generation and diversification, including gender
- External expert support for organisation and process development
- Additional planning inputs from regional organisations (RCC, REC, GWP), ODA projects and the EU

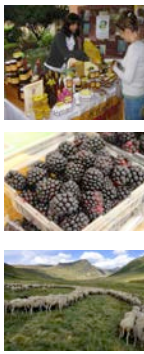


Rural development by integrated forest and water resource management in South-East-Europe – Benjamin Mohr 10.09.15. page. 8

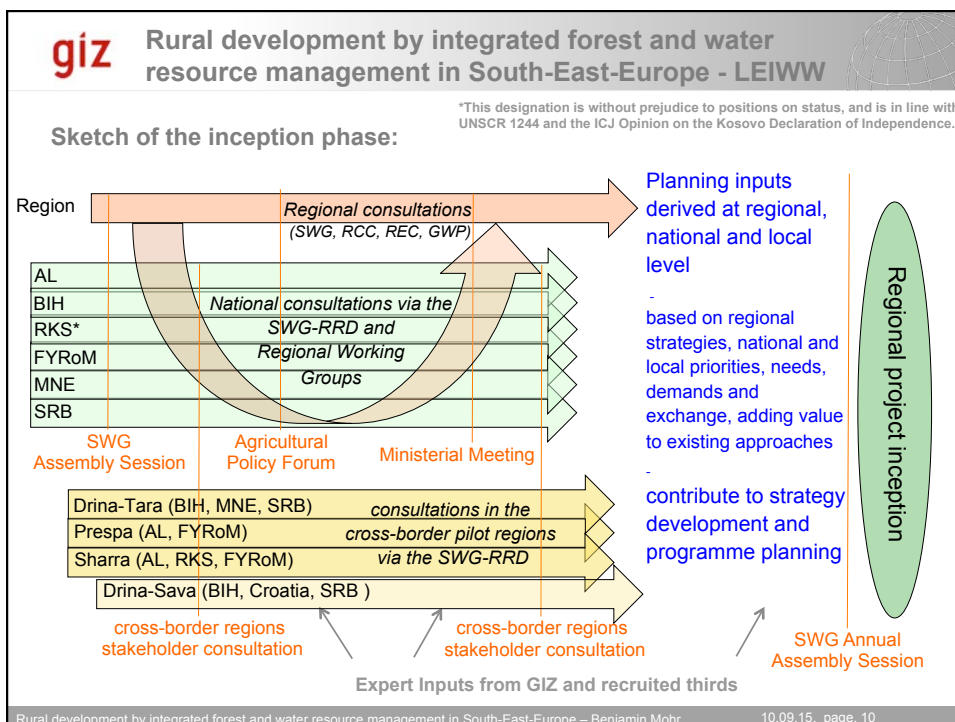
giz Rural development by integrated forest and water resource management in South-East-Europe - LEIWW

The inception phase aims to:

- To match experiences and priorities from the region with the means and goals of the programme
- Identify main stakeholder groups, modes of delivery and roles and responsibilities for cooperation
- Identify strategic objectives and to develop a programme strategy
- Identify alignment platforms for cooperation and scaling-up
- Confirm cross-border regions and identify pilot measures
- Identify gaps of existing assessments and define principles and baselines for monitoring of results
- Identify needs and strategies for qualification and capacity development at regional and national level and in the cross-border pilot regions
- Develop a steering structures for normative, strategic and operational governance of the programme



Rural development by integrated forest and water resource management in South-East-Europe – Benjamin Mohr 10.09.15. page. 9



giz Rural development by integrated forest and water resource management in South-East-Europe - LEIWW 

Way forward

- Development and approval of the programme strategy
- Financing agreements with SWG to implement activities
- Selected international and regional experts will provide for further support
- Capacity building and monitoring will accompany all measures
- The steering structure will be informed regular to contribute to steering and alignment of the programme and the scaling-up of results
- Any Questions?



Rural development by integrated forest and water resource management in South-East-Europe – Benjamin Mohr 10.09.15. page. 11