

The Rural Development Programme for Ireland 2014 - 2020



PATRICIA KELLY
RURAL DEVELOPMENT DIVISION

16TH NOVEMBER 2015



Overview



Regulatory Background

Description of Measures

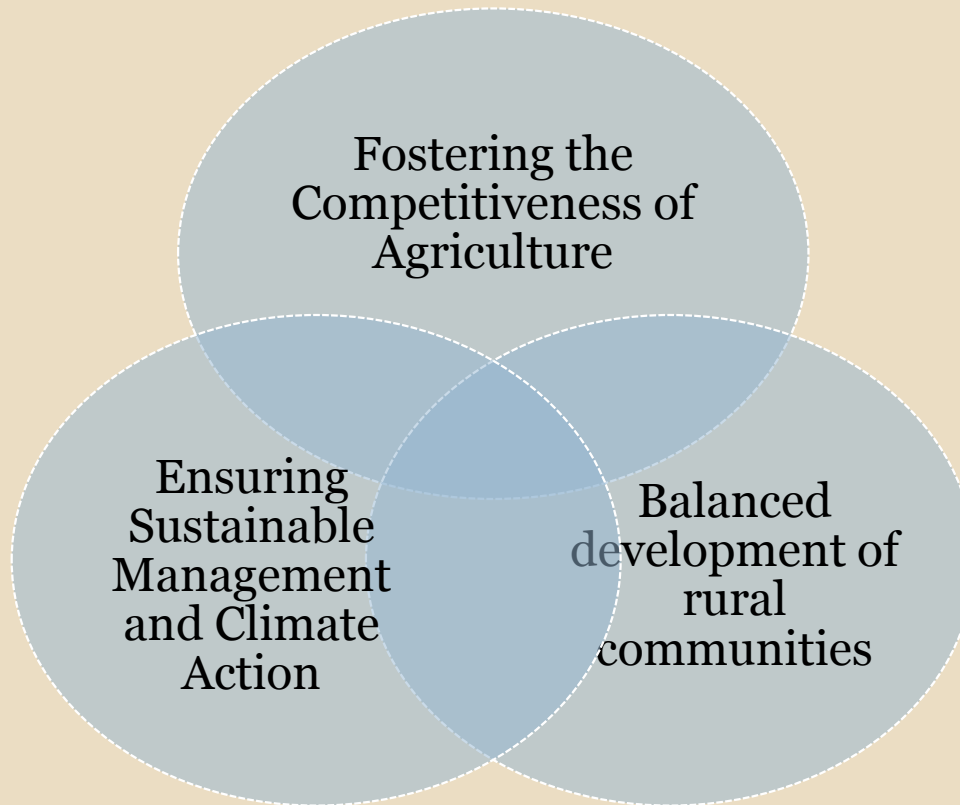
Management and Control Structure

Monitoring and Evaluation

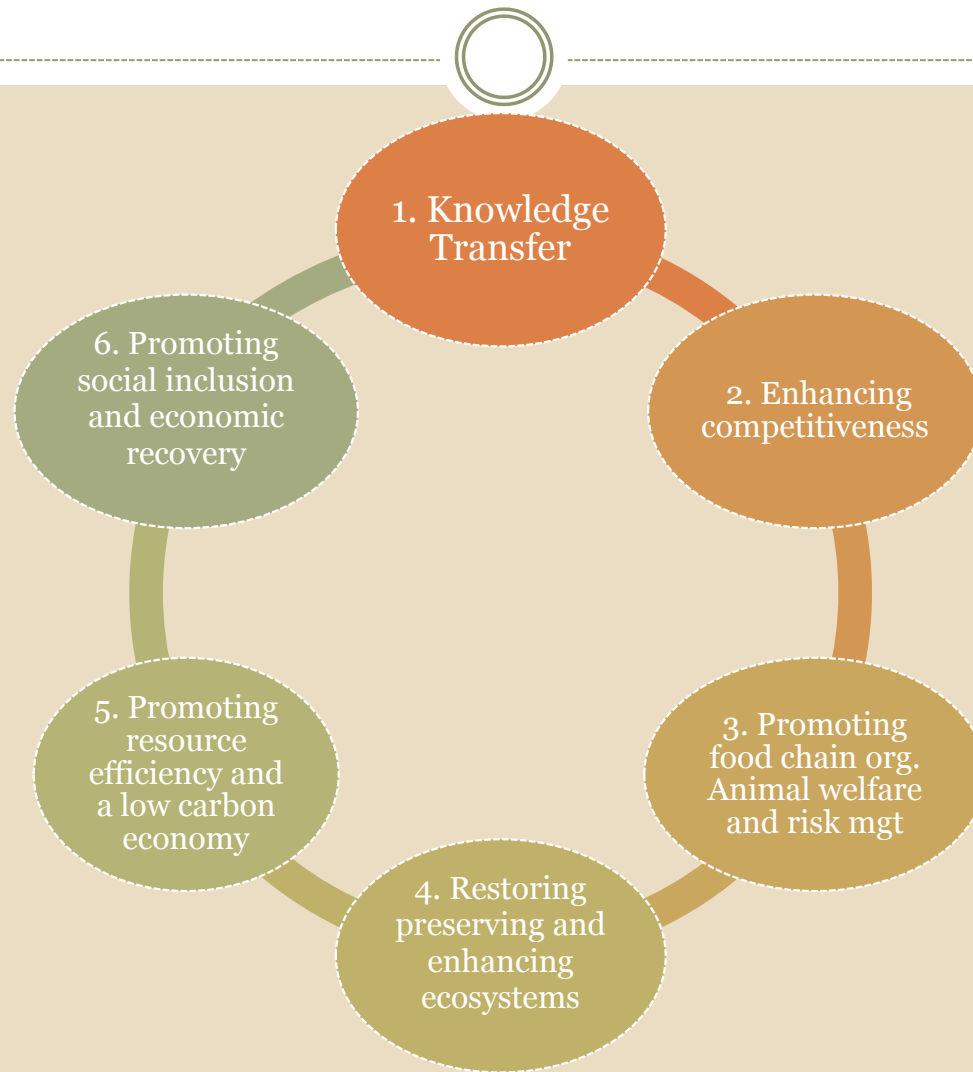
RDP 2014 - 2020



The Rural Development Regulation 1305/2013 sets out 3 objectives for the new RDP.



Pillar 2 Priorities for Rural Development



Design and Approval of the RDP



Dec 2012

- Call for public submissions on RDP Priorities

July 2013

- Stakeholder forum to develop SWOT analysis and needs assessment

Jan 2014

- Call for submissions and a stakeholder event on proposed RDP Measures

May 2014

- Ex-ante evaluation incorporating a Strategic Environmental Analysis

July 2014

- Submission of Ireland's draft RDP

May 2015

- Formal adoption of Ireland's RDP

MEASURES AND SCHEMES



M1 – Knowledge Transfer



M2 – Advisory Services



M4 – Investments in Physical Assets



M7 – Rural Services and Renewal



M10 – Agri-environment - climate



M11 – Organic Farming



M13 – Areas facing natural constraint



M16 – Co-operation



M19 - LEADER

Measure 1 and Measure 2



M1: Knowledge Transfer
Budget €126 million

- Farmer discussion groups
- Training: Will be provided by DAFM approved advisors in support of GLAS and BDGP

M2: Advisory Services
Budget €8 million

- Continuous Professional Development (CPD) for Agricultural Advisors
- Animal health and welfare training for on-farm advisors

Measure 4



Targeted Agricultural Modernisation Schemes

Budget €425
million

- Dairy equipment,
- Low emission spreading equipment
- Animal welfare and farm safety
- Pig and poultry investments
- Organic Capital Investment
- Farm nutrient storage
- Animal housing
- Young Farmer Capital Investment Scheme.

Non productive capital investments in GLAS

- Support for a number of non-productive investments linked to the achievement of agri-environment-climate objectives.

Measure 7



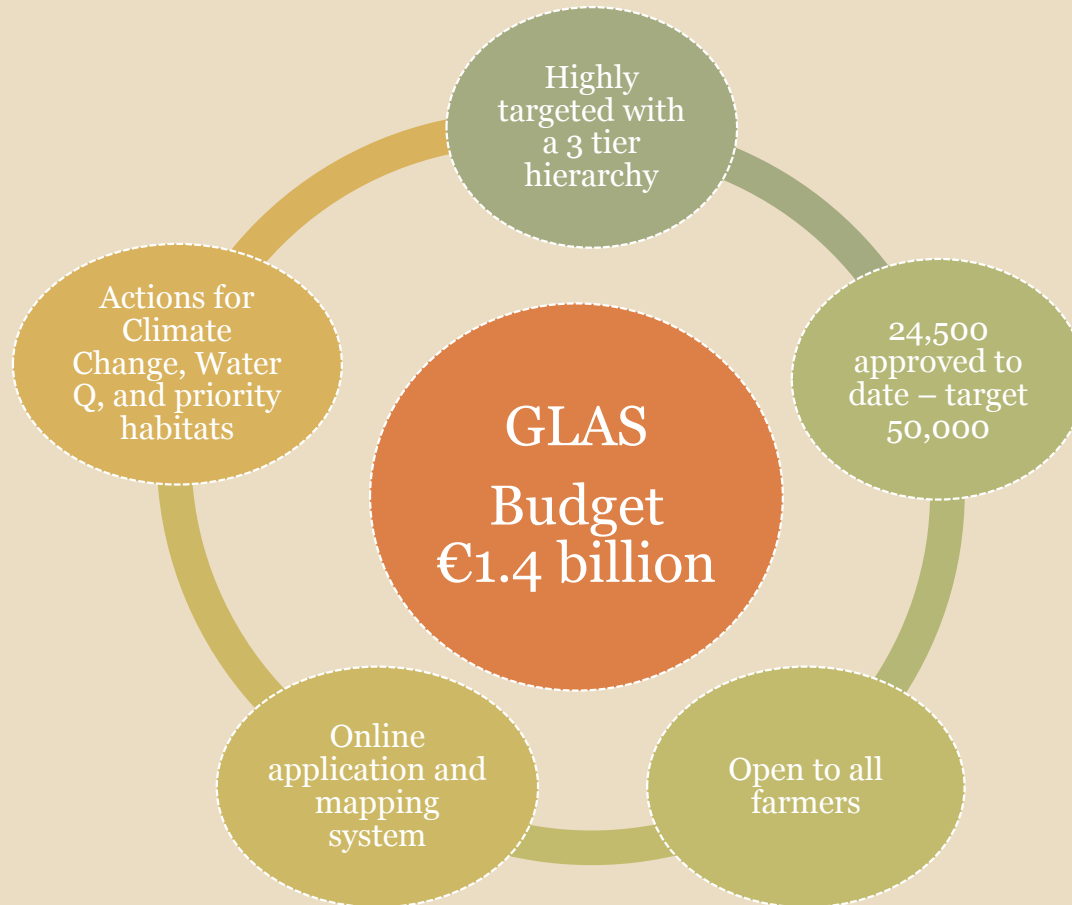
Traditional Farm
Buildings
Budget €6
million

- The restoration of small traditional farm buildings and other structures of significant cultural and heritage value

Measure 10



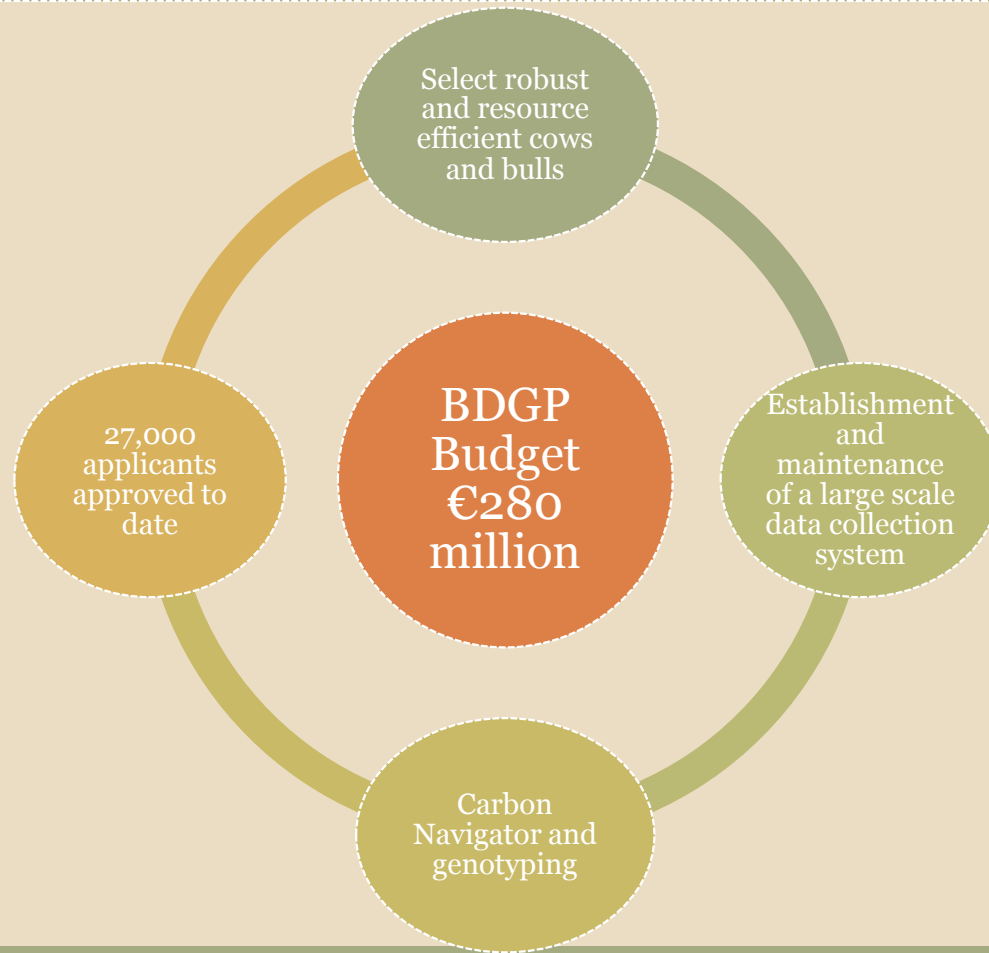
GLAS - Green Low Carbon Agri-Environment Scheme



Measure 10



BDGP – Beef Data and Genomics Programme



Measure 10



Measure 11



**Organic Farming Scheme
Budget €56 million**



Encourage farmers to convert from conventional farming methods and to apply organic farming methods



Registration with organic control body and possession of valid organic licence



870 applications have been received for new Organic Farming Scheme

Measure 13



**Areas of Natural Constraint
Budget €1.37 billion**



Payments to farmers in areas facing
natural or other specific constraints



A separate category of support made
available to compensate Island Farmers



The objective of this support is to
compensate farmers for income
foregone and additional costs linked to
the disadvantage of the area concerned.

Measure 16



Cooperation

- Budget -
- Overall €7 m

European Innovation Partnerships

- Budget €4 million
- Greater linkages between research and on farm implementation
- Supported via the RDP through EIP operational groups

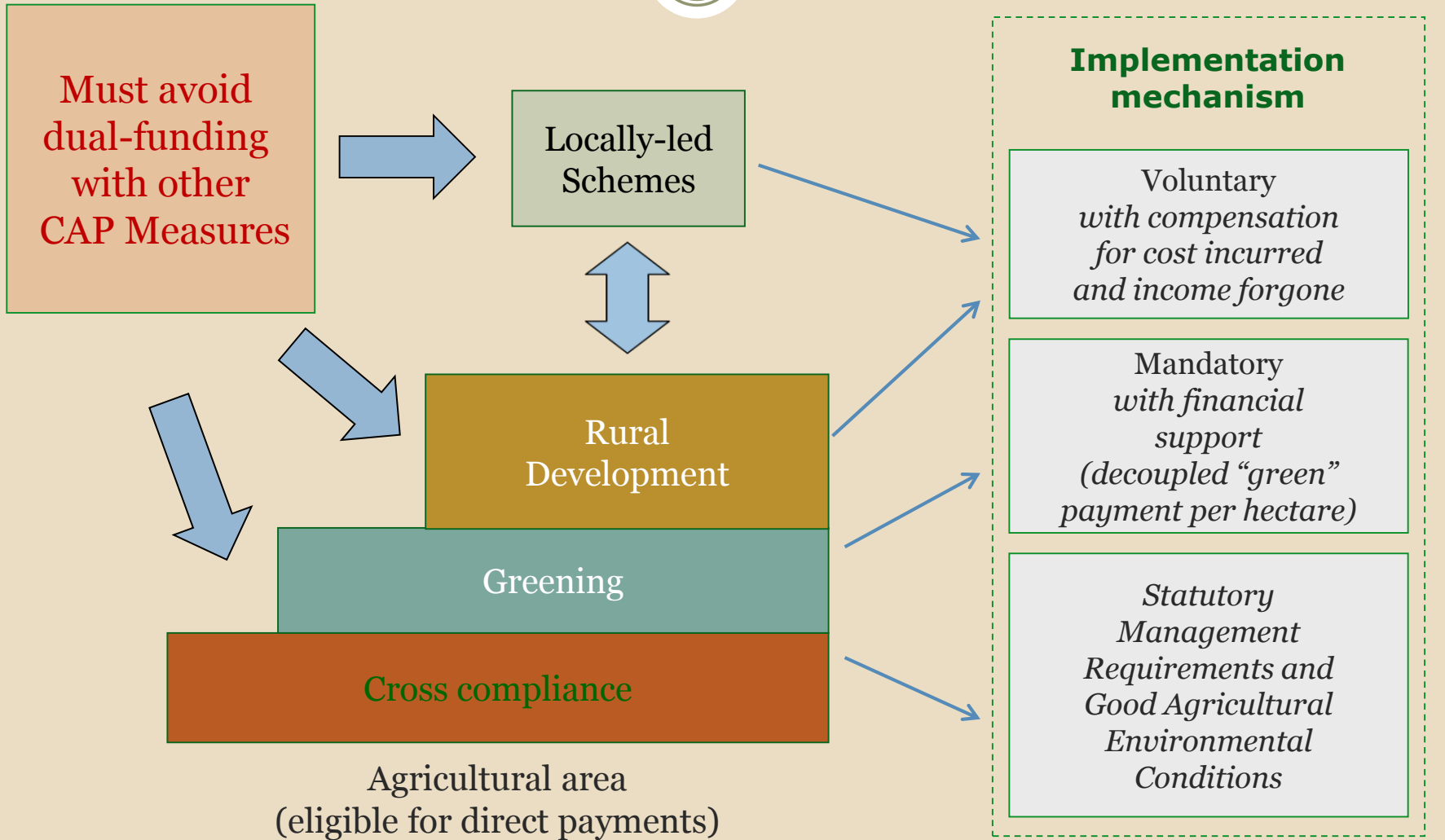
Collaborative Farming

- Budget €3 million
- Aims to address structural, economic and social problems facing Irish agriculture.
- May receive a contribution of 50% towards legal, accounting and advisory costs involved in setting up partnership – max €2,500

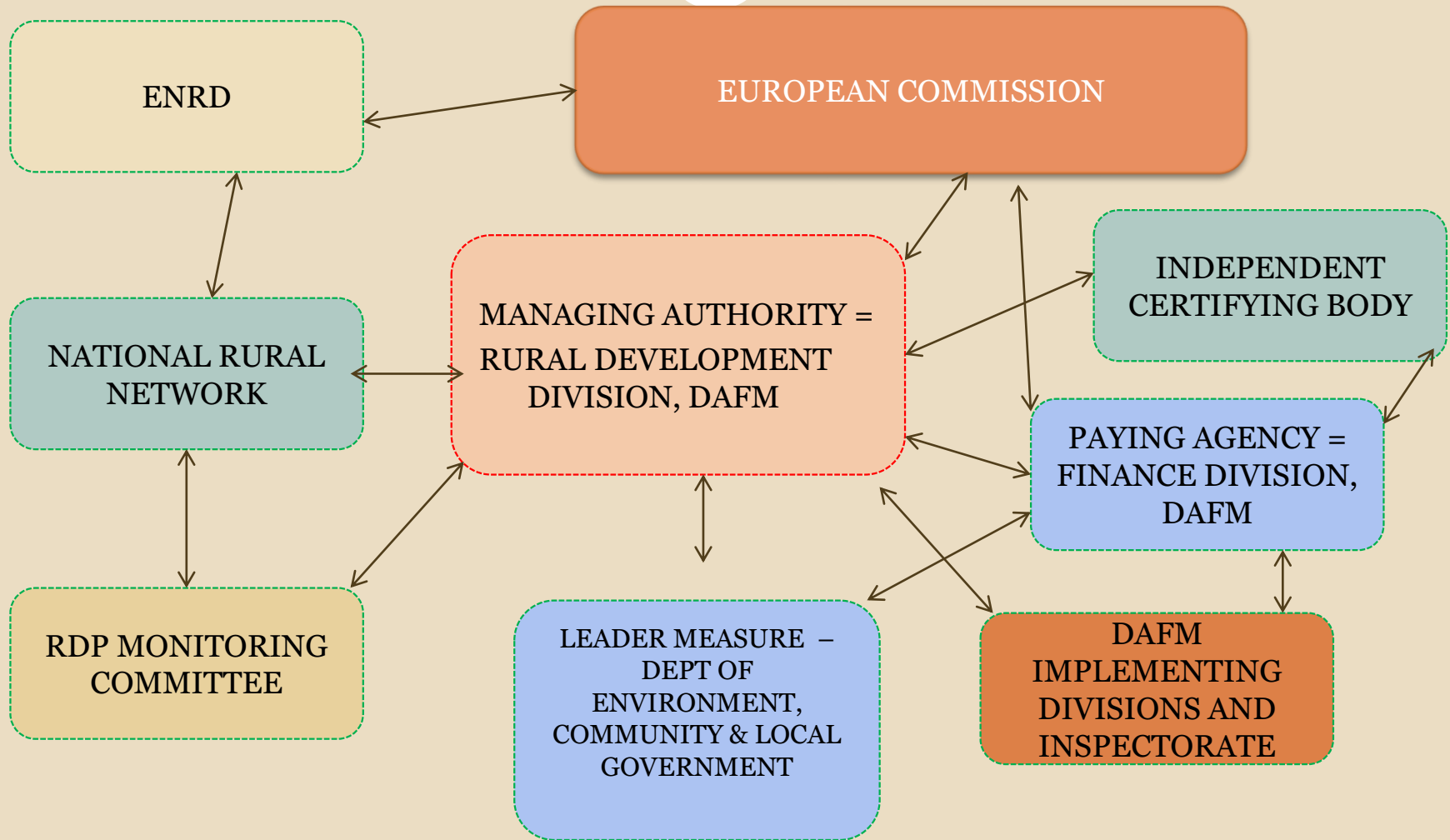
Measure 19



CAP ARCHITECTURE



Management and Control Structure



Management and Control Structure

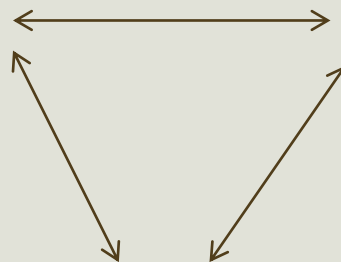


Ireland's Rural Development Programme 2014-2020

Managing Authority – Rural Development Division

Role in relation to:

- Efficient and effective RDP implementation
- Monitoring & Evaluation of RDP
- RDP Monitoring Committee



Certifying Body – BDO

Role as an independent overseer and verifier of the completeness and accuracy of the Paying Agency's accounts

Paying Agency

DAFM Finance Division

1. Oversees financial management and control system
2. Submits EAFRD claims to European Commission

DAFM Implementing Divisions/ inspectorate

1. Implements Schemes
2. Certifies payments to beneficiaries
3. Submits EAFRD claims to Finance Division

DECLG and Local Area Action Groups

1. Delegated paying agency functions for LEADER
2. Implements individual schemes
3. Submits EAFRD claims to Finance Division DAFM

Regulatory Requirements for RDP evaluation



Annual Implementation Reports (AIRs) – beginning 30 June 2016 and each year thereafter until 2024.



Enhanced AIRS 2017 & 2019

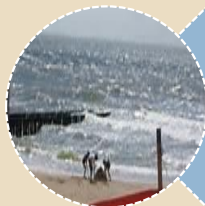


Ex Post Evaluation in 2024

Additional DAFM actions



Qualitative evaluation of LEADER – programme of substantive case studies.



One VFM / FPA to be conducted annually during 2015-2017 cycle to focus on contribution to national needs and RDP priorities.



Commitment to undertake a study of the Beef Data and Genomics Programme in 2017.



GLAS evaluation – contract awarded

The end



Thank you for you attention

Further information from:

- www.agriculture.gov.ie
- ruraldevelopment@agriculture.gov.ie
- www.environ.ie
- rdp@environ.ie