

Rural Development through Integrated Forest and Water Resources Management in Southeast Europe (LEIWW)

SWG Assembly Meeting, December 4th, 2015 Bari



South Eastern Europe
SWG RRD
Regional Rural Development Scanning Working Group



Outline

1. Introduction
2. Results of the LEIWW Inception
3. Roles and responsibilities during implementation
4. Proposed steering structure
5. Way forward





The programme with a duration of 3 years (2015-2017)

- Is commissioned by the German Federal Ministry for Economic Cooperation and Development (BMZ)
- Is a common programme between SWG and GIZ aiming to build capacities for rural development, sustainable forest and water resource management
- Objective and interventions **commonly** developed and based on **regional** proposals
- Targets 6 countries in South-East-Europe: Albania, Bosnia and Herzegovina, Kosovo, Macedonia, Montenegro and Serbia
- Works on regional, national and local level in the Area Based Development (ABD) cross-border regions
- Lead executing agencies (political partner) are the Ministries of Agriculture, through their membership in the SWG
- **Guiding principle:**
Implementation in partnership and through regional structures of SWG



Common objectives and indicators

The regional capacities for sustainable water resources and forest management within the scope of rural economic development are improved.

1. The Standing Working Group for Regional Rural Development (SWG) has introduced 3 positions to intersectoral strategic processes in South East Europe. These positions are developed in cooperation with other relevant regional organizations.
2. Four evidence-based policy recommendations of the SWG regarding the EU-compliant integration of environmental objectives into agricultural/ rural development policies are endorsed in 4 SWG member territories.
3. Six measures to promote income generation through the sustainable use of natural resources are implemented in 4 cross-border areas. One of these measures focuses on economic activities for women.
4. Two selected measures for integrated water resources and forest management are implemented on the basis of intersectoral agreements in 2 cross-border areas.



The three central fields of intervention

1. Improving coordination between the environment, forestry, water and rural development/agriculture sectors

- Contribution to multi-stakeholder, regional strategy processes
- Promotion of regional cooperation, exchange and learning

2. Integrating environmental objectives in rural development and agricultural policies

- Policy analysis and evidence-based policy recommendations to incorporate environmental objectives in national policies
- Advisory services on the harmonization of agricultural and rural development policies with the EU Acquis

3. A) Planning of integrated forest and water management approaches in cross-border regions

B) Income generation and diversification based on the use of natural resources in cross-border regions

- Income generation through the sustainable use of natural resources, including economic activities of women
- Measures for integrated water and forest resources management





Inception Phase (09/15 – 01/16)...

- Aims at identifying strategic objectives and **concretising the programme strategy** based on
 - Matching **regional priorities** with the means/goals of the programme
 - **Concretisation of main stakeholder groups**, modes of delivery and **roles and responsibilities for cooperation**
 - Identification of alignment platforms for cooperation and scaling-up
 - **Confirmation of cross-border regions** and identification of pilot measures
 - Identification of gaps of existing assessments and define principles and baselines for monitoring of results
 - Identify needs and strategies for **qualification / capacity development**
 - Development of a strategic and operational **steering structure**



Implementation of the inception phase

SWG

- Contribution to the coordination and implementation of the programme inception
- Stakeholder analysis
- Confirmation of the f cross-border regions
- Identification of needs and strategies for qualification and capacity development
- Contribution to the strategy development, operational planning, results framework and monitoring of the programme.

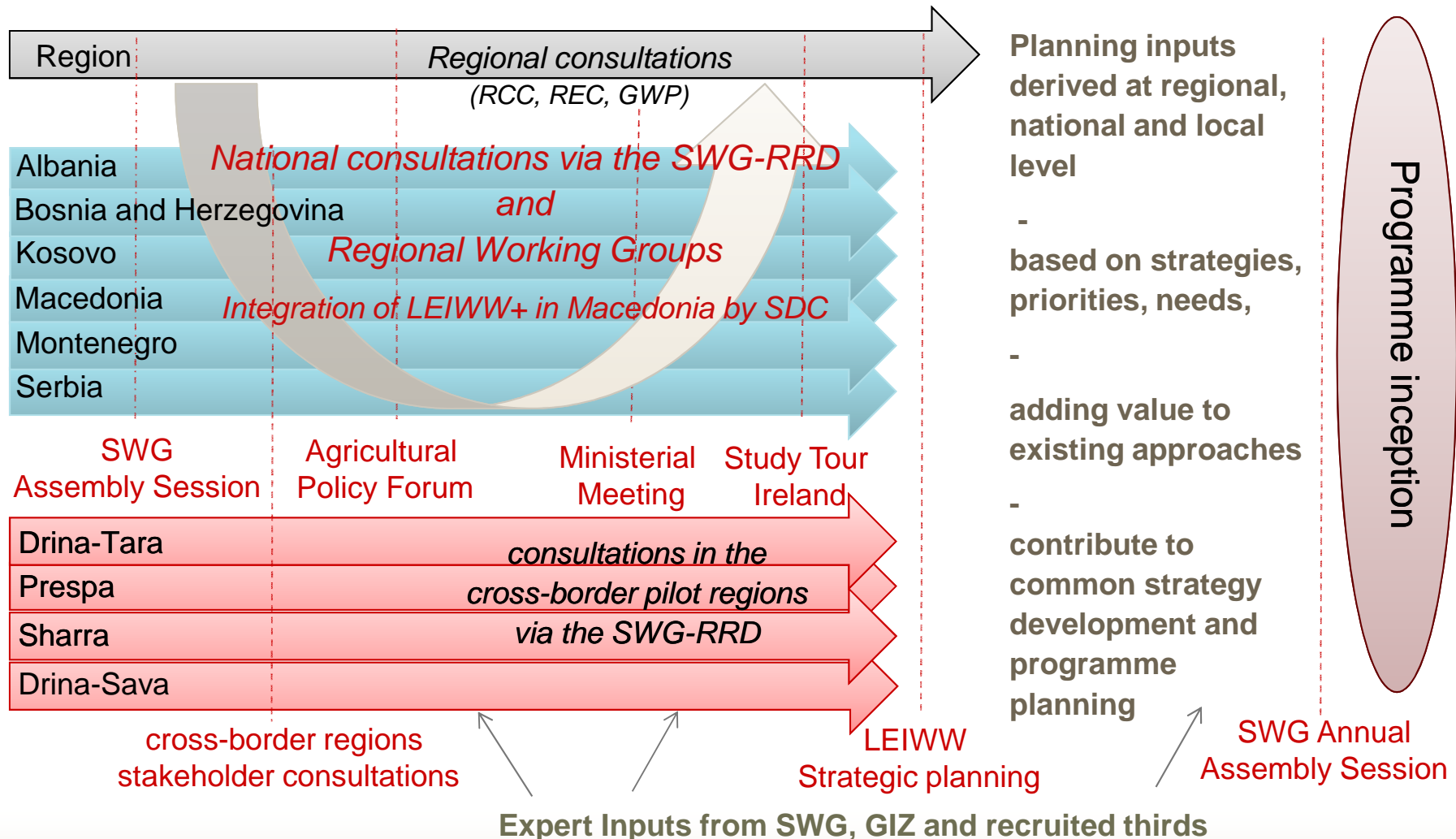
GIZ (programme team, headquarters, consultants)

- Overall coordination, priorities derived from the offer commissioned by BMZ
- Organisational Development for the LEIWW programme, facilitation of the inception phase (Robert Lukesch, ÖAR Regionalberatung GmbH)
- Measures for natural resource management and income generation in the cross-border regions Thomas Wehinger, Naccon GmbH)





Processes of the LEIWW inception phase:





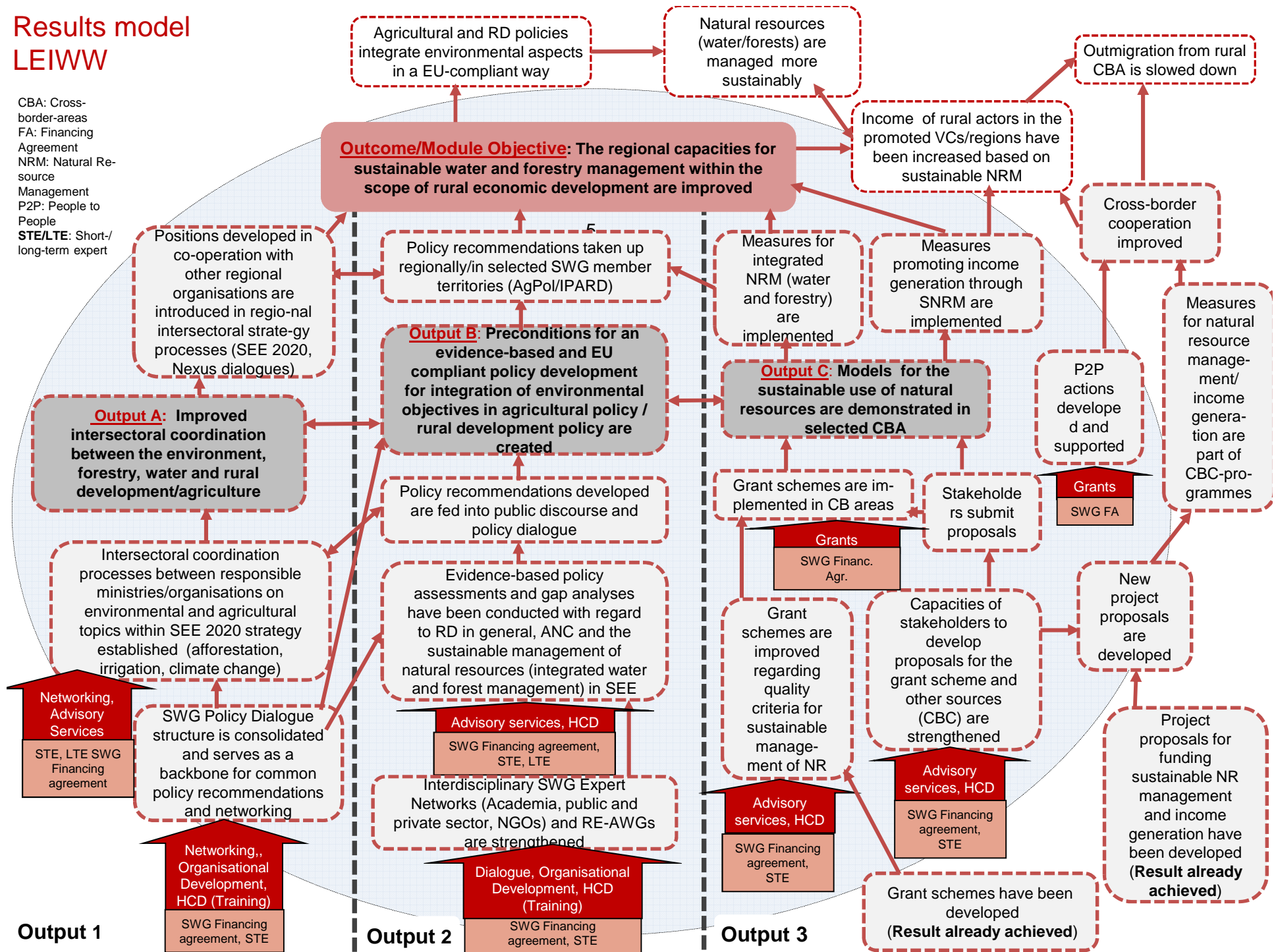
Main results of the inception phase

- Concretisation of the strategy
 - **Updated results model and logframe** for the overall programme (results matrix) with baselines and **stakeholder analysis**
 - **SWG proposal defining outputs, indicators and activities** strongly contributing to the overall programme.
Implementation within the frame of a financing agreement (1,027,000 EUR) plus SWG contribution (256,750 EUR)
 - Four **ABD-Cross-border regions confirmed**
 - Draft plan of operations
- Stakeholder analysis and mapping
- Roles and responsibilities in project implementation
- Development of a steering structure



Results model LEIWW

CBA: Cross-border-areas
 FA: Financing Agreement
 NRM: Natural Resource Management
 P2P: People to People
 STE/LTE: Short-/long-term expert



Results: Output I



	Overall BMZ Programme	SWG Contribution
Output	<p>Intersectoral coordination and planning processes at the interface of rural development, agriculture, environment, forest and water are improved on national and regional level.</p>	<p>Regional inter-sectoral coordination and cooperation at the interface between agriculture, rural development and sustainable management of natural resources contributed to the implementation of regional strategy processes in SEE</p>
Indicators	<p>A1. The SWG RRD introduces 2 proposals regarding the design of the 'Environment' Dimension into the SEE 2020 Strategy.</p> <p>A2. Within the implementation scope of the SEE 2020 Strategy (Pillar 'Sustainable Growth', Dimension 'Environment'), intersectoral coordination processes on 3 topics are established at regional level between responsible ministries/ relevant organizations regarding environmental and agricultural policies.</p>	<ol style="list-style-type: none"> 1. SWG RRD has developed measures with regard to the implementation of the indicators stipulated in the SEE Strategy 2020, Pillar 'Sustainable Growth', Dimension 'Environment' (afforestation, irrigation) ; 2. Within the scope of the SEE 2020 Strategy implementation (Pillar 'Sustainable Growth', Dimension 'Environment'), inter-sectoral coordination processes/sub-programs on 3 topics have been developed at regional level between responsible ministries/ relevant organizations regarding environmental and agricultural policies (Climate change and Nexus approach).
Activities	<ul style="list-style-type: none"> • SWG RRD input to the design and implementation of the SEE 2020 Strategy • Design of national and regional coordination and planning processes • Examples for coordination processes and dialogue platforms (national, regional) for intersectoral planning • Development of SWG RRD positions for regional Nexus Dialogues (e.g. contribution of the agricultural sector to the implementation of the Water Framework Directive, ecosystem services in agriculture, etc.) 	<ul style="list-style-type: none"> • Participation and contribution on SEE 2020 Strategy coordination activities; e. g. Agri-Environmental WG within RCC • Development of SWG RRD positions for regional Nexus and Climate Change Dialogues (e.g. contribution of the agricultural sector to the implementation of the Water Framework Directive, ecosystem services in agriculture, etc.)

Results: Output II



	BMZ Programme	SWG Contribution
Output	<p>The preconditions for evidence-based and EU-compliant policy design regarding environmental objectives in rural development and agriculture are created.</p>	<p>Evidence-based policy assessments and gap analysis have been developed and provide policy recommendations in respect to rural development in general and to areas with natural constraints, as well as for the sustainable management of natural resources (integrated water and forest management) in SEE</p>
Indicators	<p>B1. 4 policy analyses/sets of policies are analyzed and recommendations by the SWG RRD are taken up in public discourse. These analyses and recommendations are developed in cooperation with scientific institutions, the private sector and civil society.</p> <p>B2. 4 advisory services of the SWG RRD on the harmonization of the national/ regional (agricultural) policies/ legal framework with the EU Environmental Acquis are demanded by national/ regional stakeholders.</p>	<ol style="list-style-type: none"> 1. Analysis has been developed on national water, forestry and environment policies in Western Balkan countries yielding up to date information on the characteristics of the policy instruments applied in Western Balkan (WB) countries in order to assist the countries in the EU harmonisation process; 2. 4 (four) regional policy recommendations are developed and adopted among the SEE countries in respect to rural development via natural resource management in line with the EU integration process 3. The methodology for characterizing, mapping and delineating areas with natural constraints in the WB countries have been developed and recommended to the WB states according to EU standards.
Activities	<ul style="list-style-type: none"> • Strategic development of the Regional Expert Advisory Group „Water and Forest • National policy analyses (stocktaking of status quo), studies and policy recommendations • Dialogue platforms between agriculture and environment ministries/ departments/ r stakeholders • Awareness raising, civil society dialogue, media relations (publications, press statements, etc.) • Capacity development (secretariat, regional expert advisory groups, networks and multipliers) via on-the-job coaching, professional trainings 	<ul style="list-style-type: none"> • Analysis/recommendations regarding the current situation of integrated water and forest management and natural resources; • Gap analysis on national water, forestry and environment policies in SEE to provide up to date analysis of the policy instruments applied in Western Balkan (WB) countries and highlight the possible effects of policy harmonization in line with the EU on agriculture, rural development and environment (use and protection of natural resources) in SEE; • Study and policy recommendations on characterization and mapping of areas with natural constrains (low soil productivity and poor climate conditions) in the WB countries, compatible with the methodology applied according to the EU standards.

Results: Output III



	BMZ Programme	SWG Contribution
Output	Models for the sustainable use of natural resources are demonstrated in cross-border pilot regions.	Income generation from the sustainable use of natural resources has been fostered via implementation of the Area Based Development approach in selected cross-border regions (comprising the support for small projects, the organization of regional trade fairs and events promoting cultural heritage and traditions)
Indicators	<p>C1. 4 models for a sustainable and income generating management of forest and water resources are developed.</p> <p>C2. 4 project proposals for funding of sustainable natural resources management measures are submitted to the EU and/or other relevant institutions. These project proposals are in accordance with the respective quality standards and formats</p>	<ol style="list-style-type: none"> Grant schemes have been implemented in the 4 cross-border rural regions in order to support: <ul style="list-style-type: none"> Sustainable rural economy development; Support provided for rural economy development through joint regional initiatives for development of integrated offer of products and services; Employment and the competitiveness of the region has increased through strengthening green value chains and capacity building; Support has been made to individual investments in businesses development within the regional initiatives. Pilot measures taken for rural economy/environment improvements, focusing on protection of environment and sustainable management of natural resources. People-to-people actions have been supported and implemented, focusing on economic and socio-cultural priorities of a regional character;
Activities	<ul style="list-style-type: none"> Analyses of the pilot areas and development of models (e.g. green value chains, rural tourism, etc.) Capacity development and project proposal drafting in cooperation with local stakeholders Methodological and professional capacity development on water and forest resources management (curricula, professional trainings) Knowledge management and upscaling of pilot experiences (regional/ national level, further areas). 	<ul style="list-style-type: none"> Implementation of pilot actions via Grant Scheme for farmers and other small business operators in 4 selected cross border rural areas in the Western Balkan countries (e.g. support for small project dealing with agro-forest development, green value chains development, eco engineering services development within small communities, use of renewable energy, secondary forest products processing, responsible use of water in rural economy, rural tourism and etc. Implementation of People-to-people actions



	SWG Contribution
Output	The SWG Policy Dialogue structure is consolidated and serves as a backbone for common policy recommendations and networking;
Indicators	<ol style="list-style-type: none"> 1. 4 (four) policy and political dialogue platforms have been organized for identifying thematic areas in which all SEE countries are most interested to make improvements and reforms; 2. Regional inter-sectoral policy recommendations regarding the integration of environmental objectives into the agricultural and rural development framework have been introduced in 4 SWG RRD member territories via Regional Expert Advisory Groups; 3. Multi-national networking among over 100 stakeholders in rural development and civil society has been strengthened, in order to empower rural communities to participate in decision-making related to sustainable rural development.
Activities	<ul style="list-style-type: none"> • SWG Assembly Sessions; • SWG Agricultural Policy Forums; • The ministerial meeting of the Ministries of Agriculture; • Technical discussions/expert meetings and networking activities on agriculture, forestry, water management and rural development of already established networks within the SWG framework; • Rural stakeholders in SEE countries have established and maintained cooperation through direct meetings, regional trade fairs and events to preserve cultural heritage and traditions.

→ Contributes to / precondition for all outputs of the overall programme objective



Roles and responsibilities

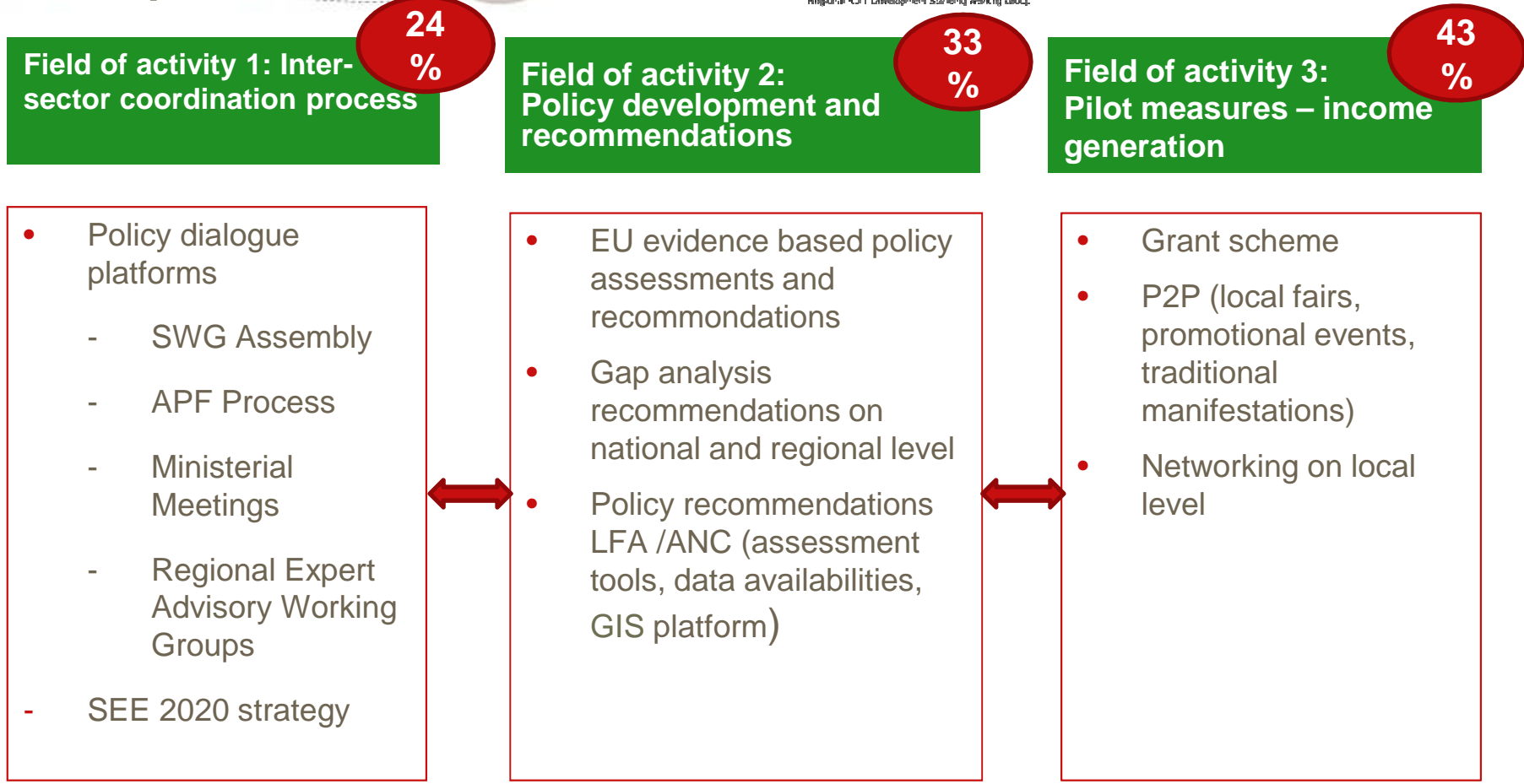
SWG RRD

- Political partner of the BMZ programme
- Financial direct contribution 256,750 EUR (20 %) and estimated indirect contribution of 1, 3 mil EUR
- Implementing partner on:
 - Regional (WB) level
 - National level
 - Local (cross-border region) level
- SWG provides: implementing structure, dialogue platforms, regional scientific networks, regional and national expertise
- Design the implementation of the SWG contributions in line with SWG, corporate practices and internal regulations
- Takes part in programme steering

GIZ

- Financial contribution:
2 mil EUR (1,136,000 EUR – 1,026,000 for implementation (80%) and 109,000 EUR for inception phase to SWG)
- Responsible for Implementation of the commission of BMZ
- Provides the infrastructure, financial and human resources required
- Designs the commission in line with technical and corporate quality requirements and standards the commissioning party
- Reports to the commissioning party
- Develops a result-based monitoring system
- Provides international consultancy services in acclamation with SWG in all three fields of activity (e.g. Short-term and long-term expertise)
- Takes part in programme steering

SWG Responsibilities



Cross-cutting activities: Networking / Capacity building / Coordination / Consultation with relevant stakeholders / LEADER approach



Field of activity 1: Inter-sector coordination process

- Expertise for inter-sectoral coordination processes
- Expertise for the integration of agricultural / rural development and environmental objectives in regional strategies
- Support to networking, exchange in SEE and the EU

Field of activity 2: Policy development and recommendations

- International expertise for policy assessments
- International expertise regarding specific topics:
 - Integrated Water and Forest Management
 - Areas with natural constraints
- International expertise and advisory services for policy recommendations

Field of activity 3: Pilot measures – income generation

- Expertise for the upgrading of the grant scheme („greening“ of the grant scheme, e. g. for value chains)
- Expertise for the development of models for income generation
- Expertise for sustainable natural resource management

Cross-cutting activities: Capacity Development / Result-based monitoring
Networking / Coordination and consultation with relevant international
stakeholders / Resource mobilization



Principles of cooperation between SWG and GIZ

- Partnership and equal basis
- Definition of partnership:
“a relationship resembling a legal partnership and usually involving close cooperation between parties having specified and joint rights and responsibilities”
- SWG is partner organization of GIZ, both political counterpart and implementing partner
- SWG is not a contractor, nor consultancy company
- SWG is responsible for management and implementation, as well as delivery of outputs on its part of the responsibilities

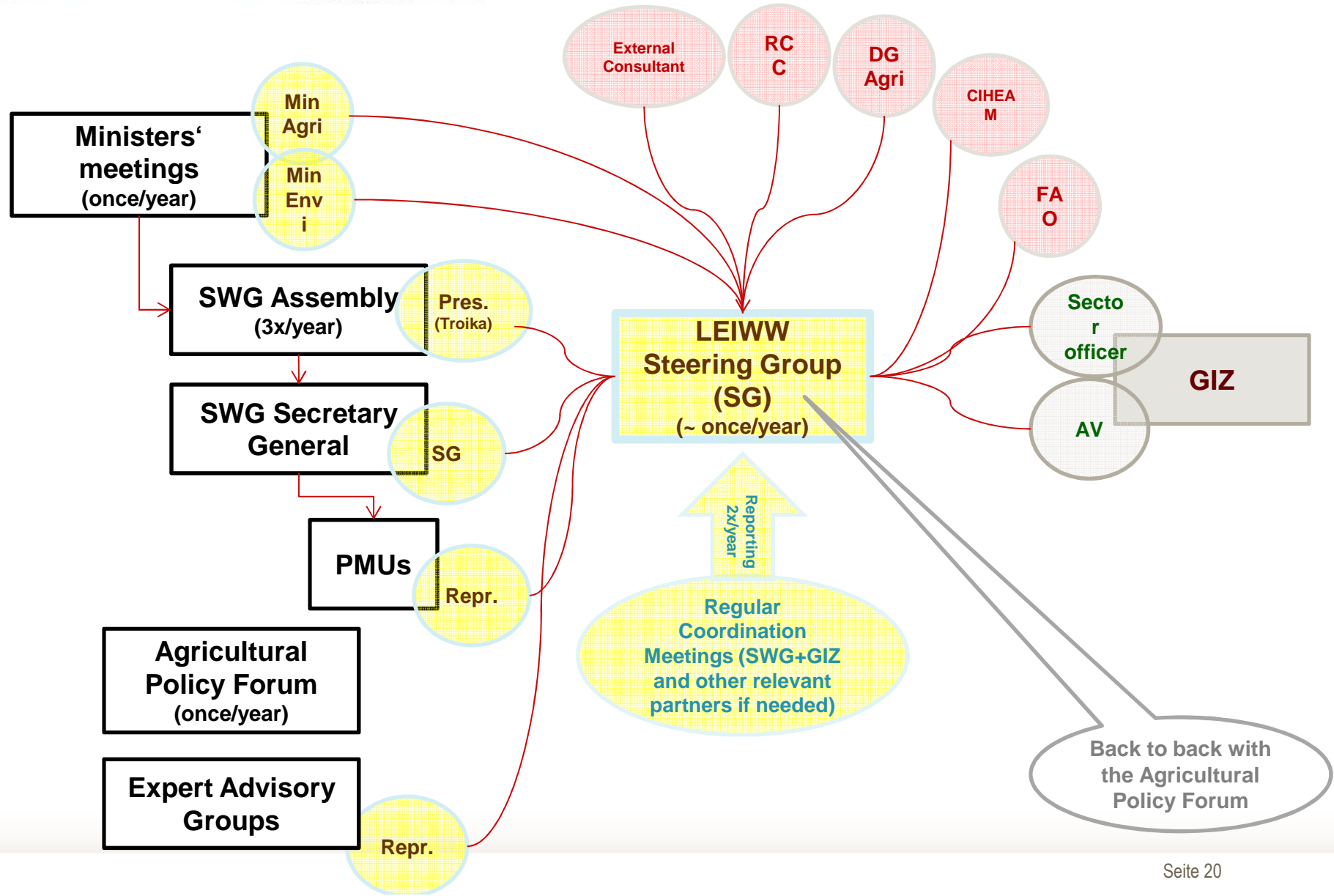




Steering Structure

- A Steering Group (SG) consist of representatives of:
 - SWG (SWG Head Office/ Secretariat, former, current and future SWG Presidency-yearly rotating basis)
 - Representatives of the Ministries of Agriculture and Environment
 - GIZ programme representatives and planning officer
 - representatives of partner organizations: e.g. RCC, FAO, DG AGRI, CIHEAM
 - International and regional consultant
- The Steering Group will advise and monitor the SWG-GIZ LEIWW Programme on implementation and up-date of the programme activities. It will meet at least two times during programme implementation period
- The Agriculture Policy Forum will be used as occasion for SG meetings
- For the programme duration, the SWG will meet six times and will provide inputs for the implementation and the achievement of foreseen objectives and results

LEIWW Steering Structure





Way forward

- Presentation, discussion and approval of the programme strategy
→ SWG Assembly Bari, 12/15
- Finalisation and documentation of the inception phase
→ End of January 2016
- Operational planning and Financial Agreements for implementation
→ End of January 2016
- Draft Implementation Agreement SWG - GIZ LEIWW
→ December 2015
- Implementation of the programme
→ January 2016 – December 2017

