



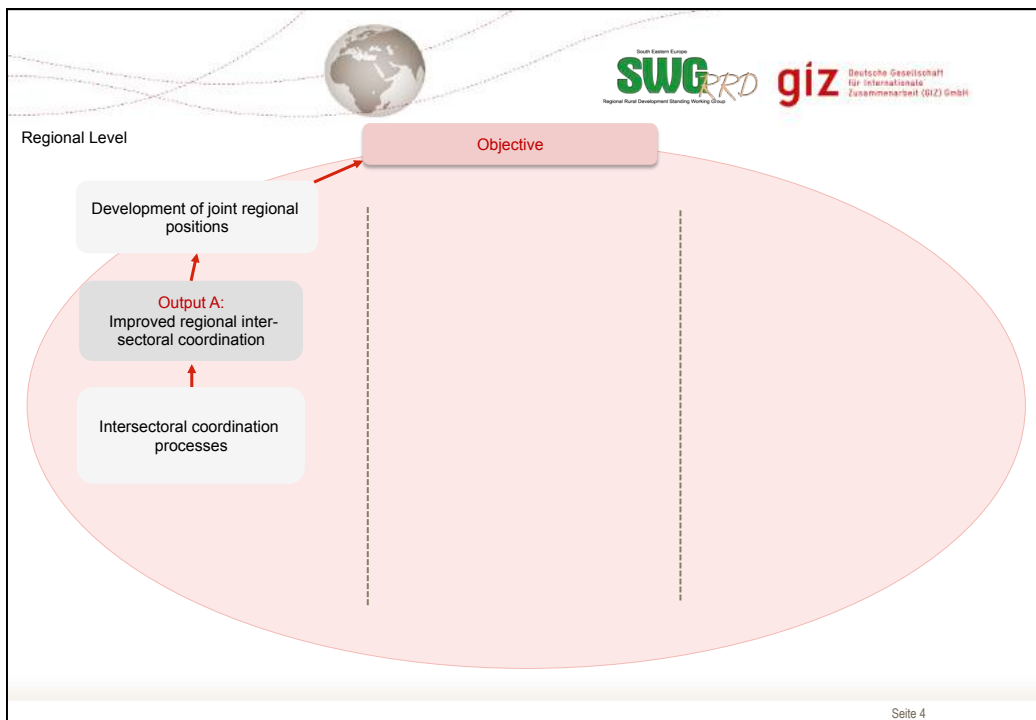
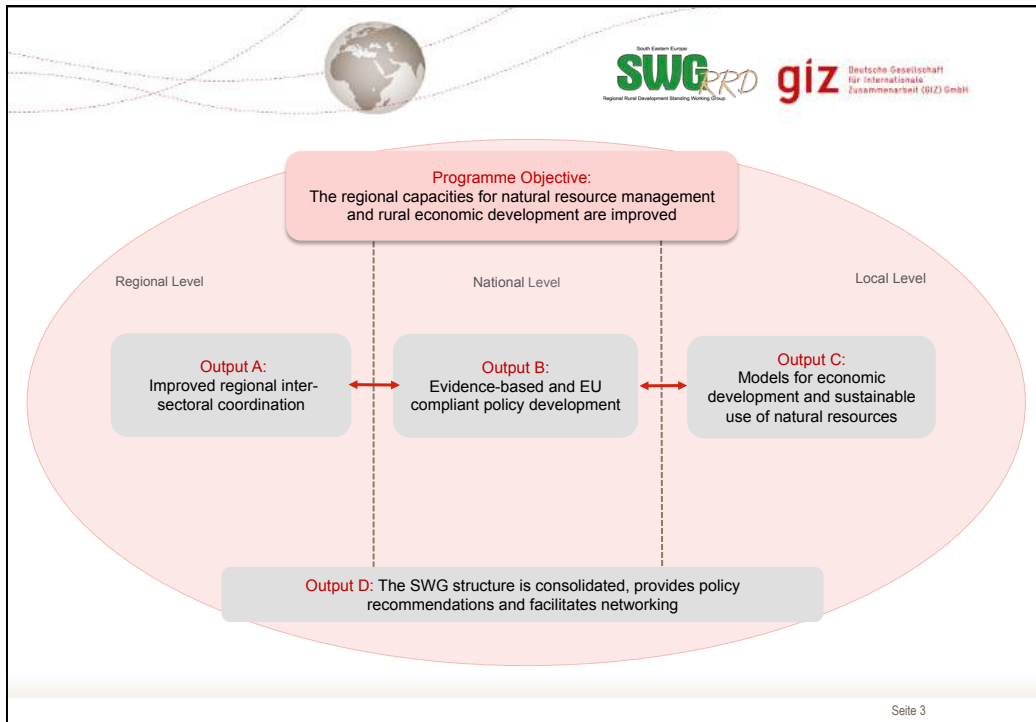
The slide features a header with a globe icon and logos for SWG (South Eastern Europe Regional Rural Development Standing Working Group) and giz (Deutsche Gesellschaft für Internationale Zusammenarbeit (GIZ) GmbH). The main title is "Rural Development through Integrated Forest and Water Resource Management in Southeast Europe" followed by "LEIWW". Below the title is a red-tinted image of a globe with a forest scene overlaid. At the bottom, it states "37th SWG Assembly Session, Budapest, Hungary December 06th, 2016".



The slide features a header with a globe icon and logos for SWG and giz. The title is "The LEIWW Programme". Below the title are four red arrow-shaped boxes pointing to the right, each containing a category and its details:

- Commissioned by:** German Federal Ministry for Economic Cooperation and Development (BMZ)
- Budget | Duration:** 3.5 Mio. EUR + Kofi MK | 3 years (2015-2017)
- Main partners:** SWG / Ministries of Agriculture in SEE
- Target countries:** Albania, Bosnia and Herzegovina, Kosovo*, Macedonia, Montenegro and Serbia

At the bottom right corner, it says "Seite 2".



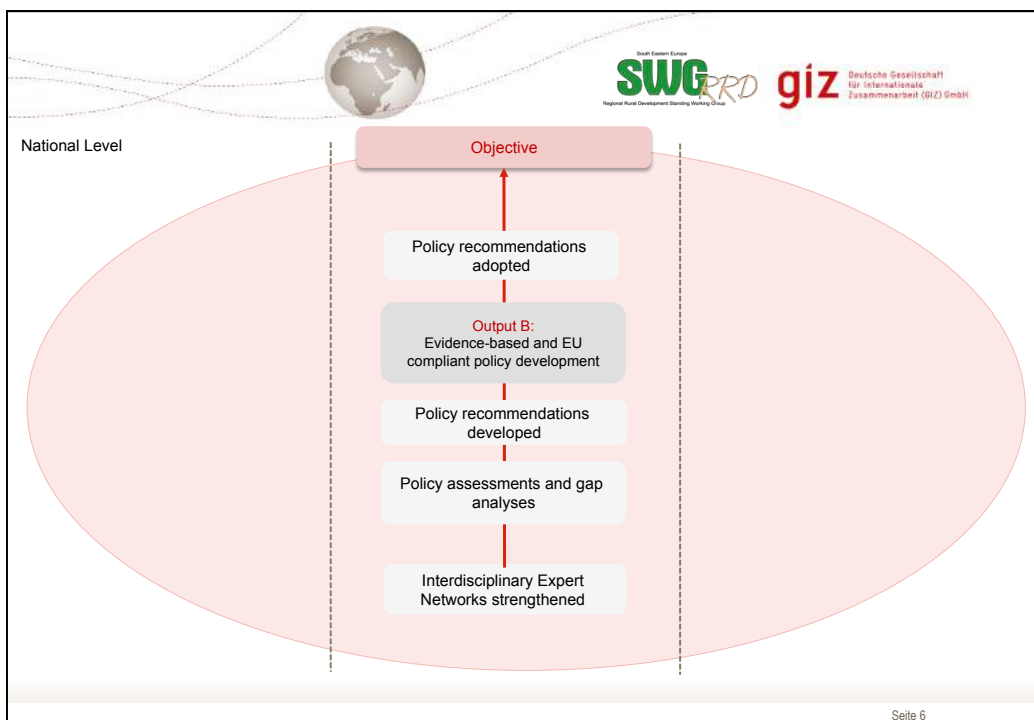





Progress review

Output A: Intersectoral coordination processes at the interface of rural development, agriculture, environment, forest and water are improved on national and regional level.

- Support to the coordination of the regional activities and events of the SEE 2020 Strategy
- Support to the preparation of measures with regards to the indicators of the SEE Strategy 2020, Pillar Sustainable Growth, Dimension Environment
- Support to integrate further relevant Ministries and stakeholders into existing structures and working groups of SWG
- Involvement in the Meeting of the Ministries of Environment, Podgorica, April 2016
- Support of the Meetings of Ministers of Agriculture of SEE, Agricultural Policy Forums, SWG Assembly Sessions and further regional exchange formats
- The Regional Cooperation Council (RCC) will integrate and uphold the agriculture and rural development in the Programming Document 2017-2019 of the SEE 2020 Strategy framework and implementation processes.

Rural Development through Integrated Forest and Water Resources Management in Southeast Europe (LEIWW) Seite 5



Progress review

Output B: Evidence-based and EU compliant policy development

Areas with natural constrains

- ✓ 20 national experts from 6 countries/territories, 1 regional expert and the international experts from CIHEAM IAMB have jointly developed the national chapters and the regional synthesis report. The whole process was closely observed by EC JRC.
- ✓ The regional synthesis report provides a common regional platform and enabling environment for delineation of ANC in SEE.
- ✓ The REAWG on ANC managed to prepare one pilot delineation of an ANC area, where all meteorological, soil and the GIS data were merged under a common platform (for municipality of Aleksinac, Serbia).

Next steps:

- Design, printing and dissemination of the national and regional synthesis report
- Further dissemination of key conclusions and recommendations from the ANC assignment
- Development of project proposal for follow up activities on ANC in SEE

12.10.2016 Rural Development through Integrated Forest and Water Resources Management in Southeast Europe (LEIWW) Seite 7





Progress review

Output B: Evidence-based and EU compliant policy development

Water and Forest Management

- Support to the Regional Expert Advisory Group on "Water and Forest Management" (Kick-off Meeting, technical coordination meeting, 1st interim meeting);
- 14 national experts from the 6 countries/territories, 2 regional experts from the Forestry Faculty of Belgrade and 2 international experts from European Forest Institute / BOKU Vienna engaged in regional exchange, networking and learning to develop a methodology, design country chapters and the regional synthesis report
- The process is coordinated by the Forestry Faculty of Belgrade.
- National and regional status assessments (data availability, policy and legal framework, institutional setup) has been done;
- Consultation processes regarding the provision of policy recommendations in compliance with the EU policies are on going
- Provision of recommendations for improved policy, legal and institutional frameworks for integrated management of natural resources for all six countries/territories are ongoing

12.10.2016 Rural Development through Integrated Forest and Water Resources Management in Southeast Europe (LEIWW) Seite 8



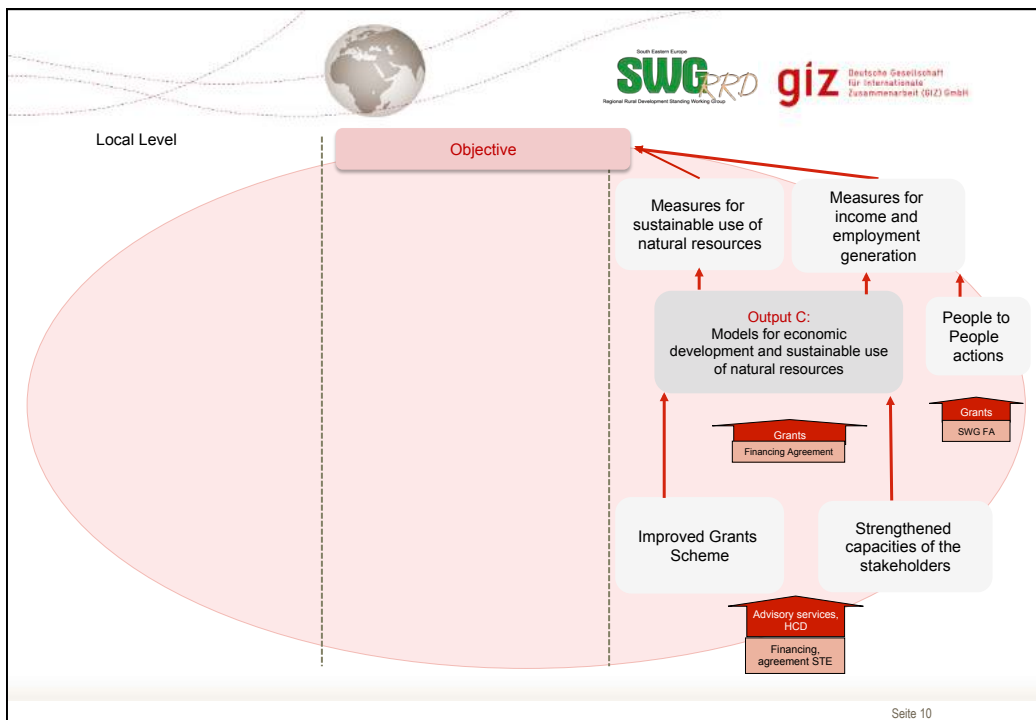
Progress review

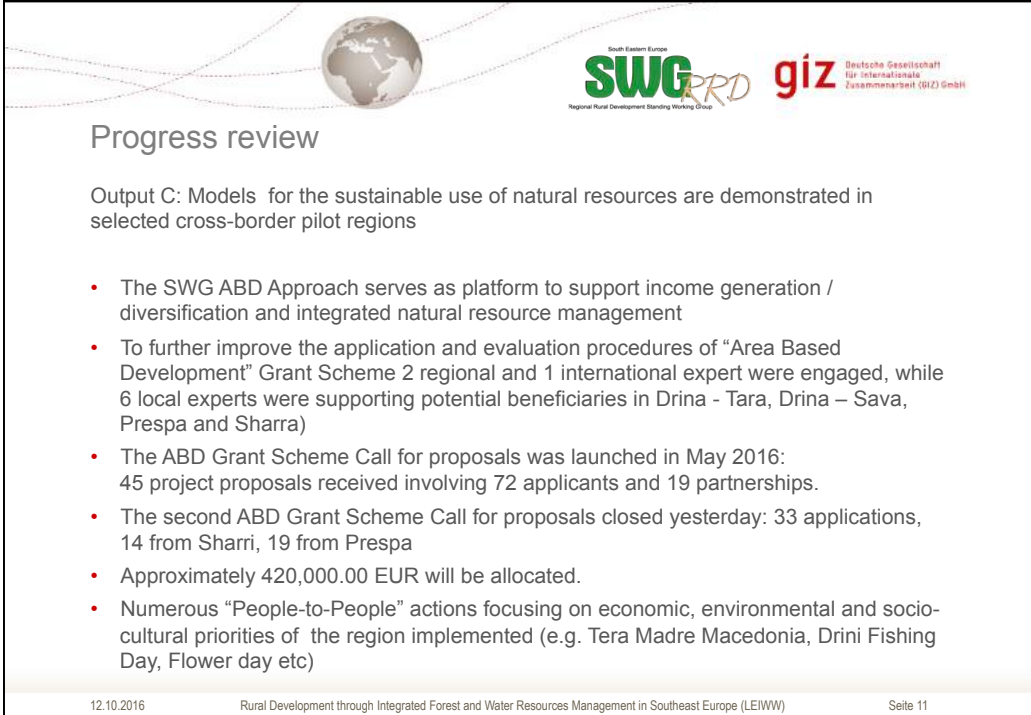
Output B: Evidence-based and EU compliant policy development

LEADER – upcoming activity

- The planning activities of this component has been finalised
- Screening of the regional circumstances and the regional state regarding the implementation of LEADER approached (Links between the rural economy and development actions) is finalised
- Screening of the status and the available experts and the setup of the REAWG on LEADER / community led local development approaches in SEE is ongoing

12.10.2016 Rural Development through Integrated Forest and Water Resources Management in Southeast Europe (LEIWW) Seite 9



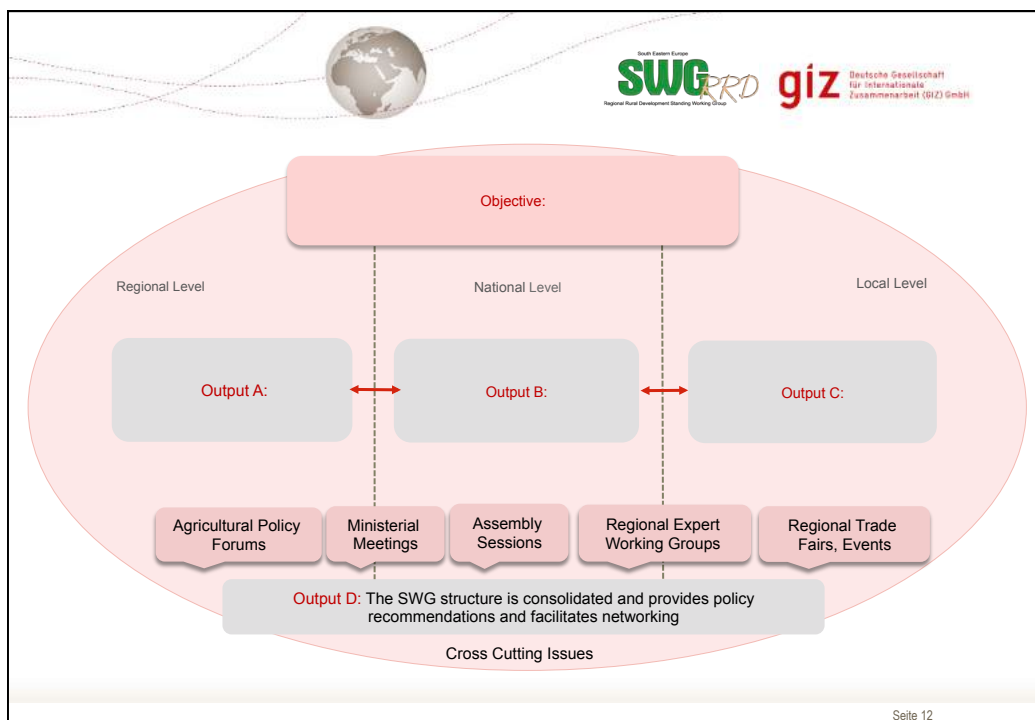


Progress review

Output C: Models for the sustainable use of natural resources are demonstrated in selected cross-border pilot regions

- The SWG ABD Approach serves as platform to support income generation / diversification and integrated natural resource management
- To further improve the application and evaluation procedures of “Area Based Development” Grant Scheme 2 regional and 1 international expert were engaged, while 6 local experts were supporting potential beneficiaries in Drina - Tara, Drina – Sava, Prespa and Sharra)
- The ABD Grant Scheme Call for proposals was launched in May 2016: 45 project proposals received involving 72 applicants and 19 partnerships.
- The second ABD Grant Scheme Call for proposals closed yesterday: 33 applications, 14 from Sharri, 19 from Prespa
- Approximately 420,000.00 EUR will be allocated.
- Numerous “People-to-People” actions focusing on economic, environmental and socio-cultural priorities of the region implemented (e.g. Tera Madre Macedonia, Drini Fishing Day, Flower day etc)

12.10.2016 Rural Development through Integrated Forest and Water Resources Management in Southeast Europe (LEIWW) Seite 11





Tasks and challenges ahead

- Continuous support to regional intersectoral coordination processes and SWG
- Dissemination of results and development of project proposal for follow up activities on ANC in SEE;
- Finalisation of the assessments and the policy recommendations in regard to forest, soil and water / natural resource management policies
- Development of expert assessments and the policy recommendations in regard to LEADER / community led local development approaches in SEE
- Exposure visits: forest, soil and water / natural resource management policies; community led local development
- Follow up of the ABD Grant Scheme: Value Chains, business partnerships and collective actions
- Development of models and project proposal for rural economic development and management of natural resources in cross-border regions
- External Evaluation of LEIWW and development of LEIWW phase II (2018 – 2020)

12.10.2016 Rural Development through Integrated Forest and Water Resources Management in Southeast Europe (LEIWW) Seite 13



Als bundeseigenes Unternehmen unterstützt die GIZ die Bundesregierung bei der Erreichung ihrer Ziele auf dem Gebiet der internationalen Zusammenarbeit für eine nachhaltige Entwicklung.

Herausgeber:
Deutsche Gesellschaft für Internationale Zusammenarbeit (GIZ) GmbH
Eingetragener Geschäftssitz: Bonn und Eschborn, Deutschland

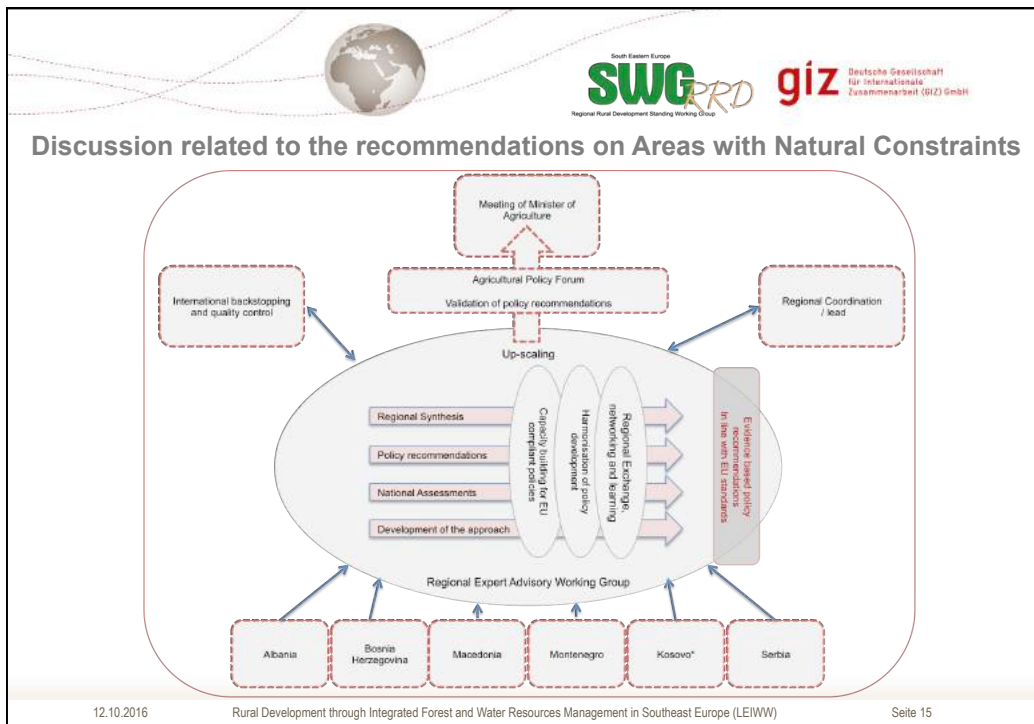
Benjamin Mohr
„Rural Development through Integrated Forest and Water Resources Management in Southeast Europe“ (LEIWW)
Antonie Grubisic 5, 1000 Skopje, Macedonia
T +389 2 3103 569
IP +49 6196 8278001
M +389 71 382 899
F +389 2 3103 587
E-Mail: Benjamin.Mohr@giz.de
URL: www.giz.de

Verantwortlich
Benjamin Mohr, Team Leader

Verfasser
Benjamin Mohr

Bildnachweis
© GIZ/SWG

Seite 14



- ### REAWG on Areas with Natural Constrains - Recommendations for decision makers (1)
- The legal and institutional process should be developed and implemented in order to facilitate the process of data sharing and flow of information among all stakeholders
 - The existing data sets should be maintained, as well as additional soil surveys and the quality of the national meteorological service should be supported and improved
 - The ANC Policy has to be part of the national Rural Development Policies
 - The ANC topic should be part of the Agricultural Rural Development legislation
 - Specific plans for different ANC regions should be developed and implemented taking into consideration that all options for income generating activities in ANC areas are explored (other than the agricultural use of land)
 - Priorities which are based on natural and socio-economic conditions of the ANC areas should be set in regards to the implementation of the payment schemes. However, the areas which are under high risk of abandonment must be prioritised.
- 06.12.16 Rural Development through Integrated Forest and Water Resources Management in Southeast Europe (LEIWW) Seite 16





REAWG on Areas with Natural Constrains - Recommendations for decision makers (2)

- Governmental support and cross sectoral cooperation at all levels is essential to support and mitigate problems of the ANC areas
- The design and the use of the ANC payment mechanism should be monitored taking into consideration the impacts on reducing migration and land abandonment
- ANC payment schemes should address and promote biodiversity conservation and sustainable management of natural resources
- ANC mechanism may be observed as a tool for better targeting of the regional rural development mechanisms and cross-border funding schemes
- The IPARD funding mechanisms may need to be adjusted to reflect ANC payment schemes (taking into consideration the existing low rate of the IPARD funding spending)
- Stronger collaboration in ANC mapping and harmonized policy implementation is recommended to all participating countries in the ANC projects. Continuous collaboration with JRC is also highly recommended

06.12.16 Rural Development through Integrated Forest and Water Resources Management in Southeast Europe (LEIWW) Seite 17





Als bundeseigenes Unternehmen unterstützt die GIZ die Bundesregierung bei der Erreichung ihrer Ziele auf dem Gebiet der internationalen Zusammenarbeit für eine nachhaltige Entwicklung.

Herausgeber:
Deutsche Gesellschaft für
Internationale Zusammenarbeit (GIZ) GmbH
Eingetragener Geschäftssitz: Bonn und Eschborn,
Deutschland

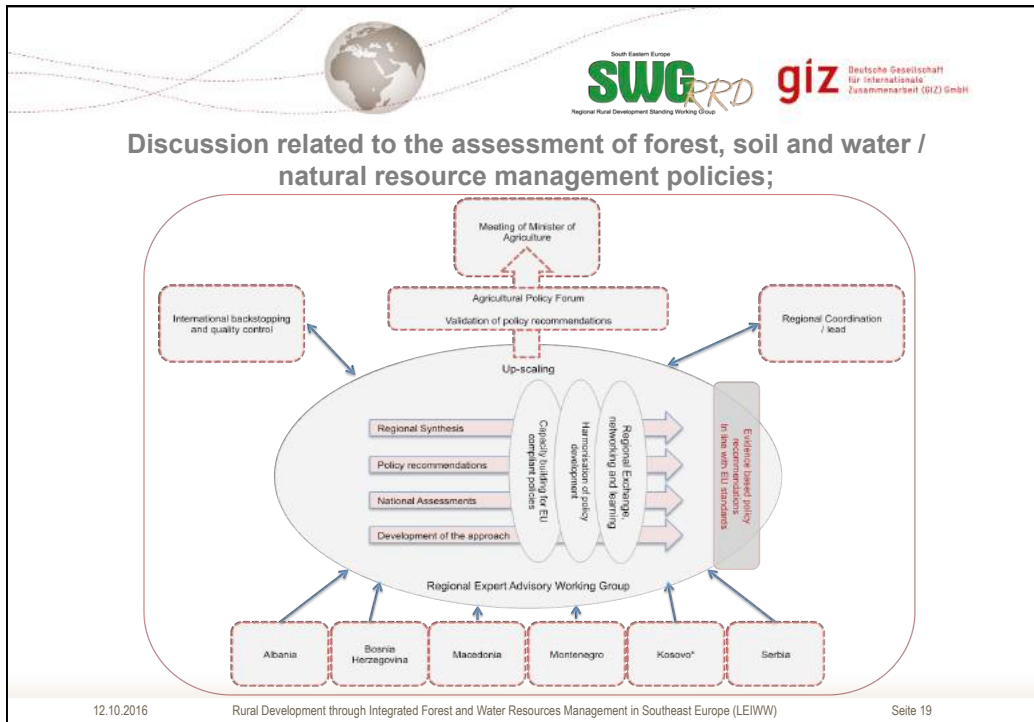
Benjamin Mohr
„Rural Development through Integrated Forest and Water
Resources Management in Southeast Europe“ (LEIWW)
Antonie Grubisic 5, 1000 Skopje, Macedonia
T +389 2 3103 569
IP +49 6196 8278001
M +389 71 382 899
F +389 2 3103 587
E-Mail: Benjamin.Mohr@giz.de
URL: www.giz.de

Verantwortlich
Benjamin Mohr, Team Leader

Verfasser
Benjamin Mohr

Bildnachweis
© GIZ/SWG

Seite 18



- ### REAWG on Water and Forest Management
- Support to the Regional Expert Advisory Group on “Water and Forest Management”
 - Kick-off Meeting, technical coordination meeting, 1st interim meeting
 - 14 national experts from the 6 countries/territories, 2 regional experts from the Forestry Faculty of Belgrade and 2 international experts from European Forest Institute / BOKU Vienna engaged in regional exchange, networking and learning to develop a methodology, design country chapters and the regional synthesis report
 - The process is coordinated by the Forestry Faculty of Belgrade.
 - Ongoing: - development of evidence-based policy assessment to provide policy recommendations in respect to forest, soil and water / natural resource management policies in compliance with the EU standards
- 12.10.2016 Rural Development through Integrated Forest and Water Resources Management in Southeast Europe (LEIWW) Seite 20



Als bundeseigenes Unternehmen unterstützt die GIZ die Bundesregierung bei der Erreichung ihrer Ziele auf dem Gebiet der internationalen Zusammenarbeit für eine nachhaltige Entwicklung.

Herausgeber:
Deutsche Gesellschaft für
Internationale Zusammenarbeit (GIZ) GmbH
Eingetragener Geschäftssitz: Bonn und Eschborn,
Deutschland

Benjamin Mohr
„Rural Development through Integrated Forest and Water
Resources Management in Southeast Europe“(LEIWW)
Antonie Grubisic 5, 1000 Skopje, Macedonia
T +389 2 3103 569
IP +49 6196 8278001
M +389 71 382 899
F +389 2 3103 587
E-Mail: Benjamin.Mohr@giz.de
URL: www.giz.de

Verantwortlich
Benjamin Mohr, Team Leader

Verfasser
Benjamin Mohr

Bildnachweis
© GIZ/SWG

Seite 21